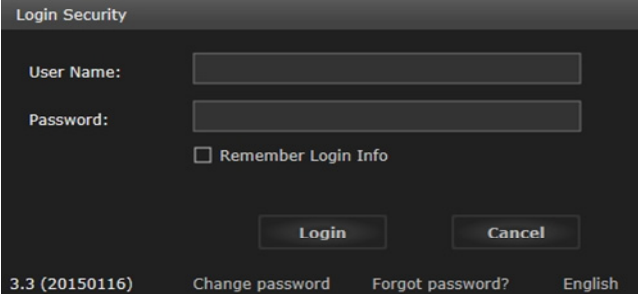


VPC Quick Guide

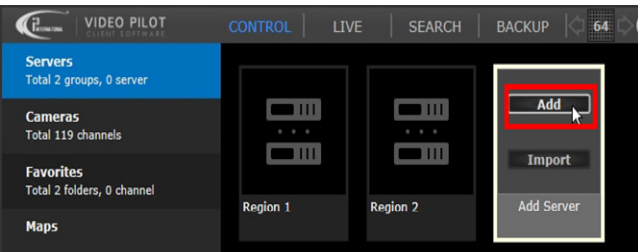
To launch VPC double click icon



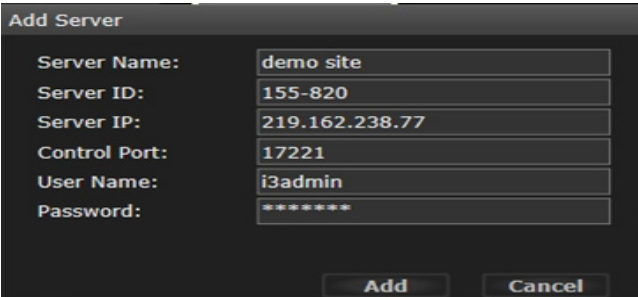
To log into VPC you must first enter a username & password then click login.



To add a new Server, move mouse over "Add Server" then click Add



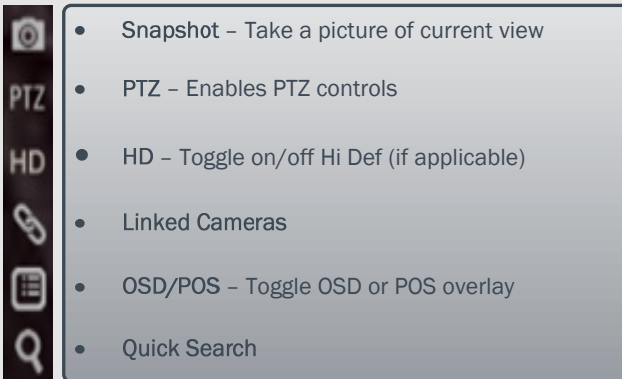
Server information will need to be entered. If you do not have this information please contact your installer/integrator.



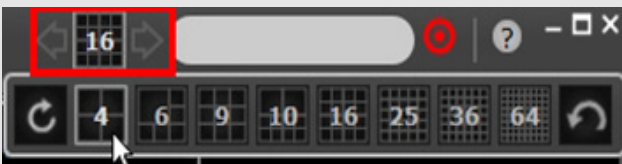
Once a new Server has been added you will see it listed. Place mouse over Server and click Connect.



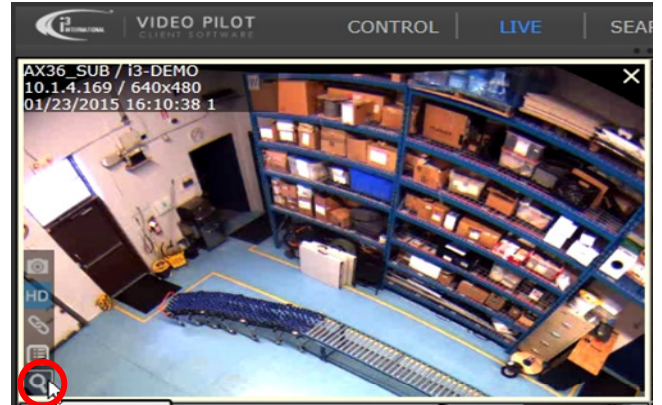
Once connected you will automatically enter LIVE tab and be viewing cameras. You'll notice the Image Control Menu when moving mouse over a camera. Each Image Control function listed below:



To change Screen Division click on the Screen Division icon [16] next to the Search bar. Then select the preferred amount of cameras to view.



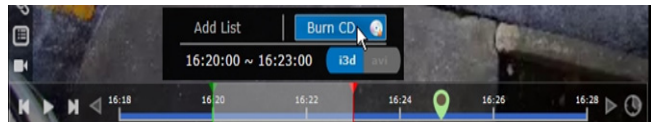
To enable Quick Search, click on the magnifying glass icon [Q] in lower left of the selected camera box.



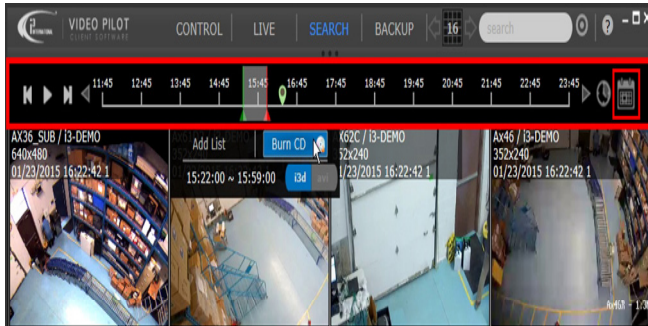
While in Quick Search you can change the duration on the timeline from 10m to 24h by click the clock icon [🕒]



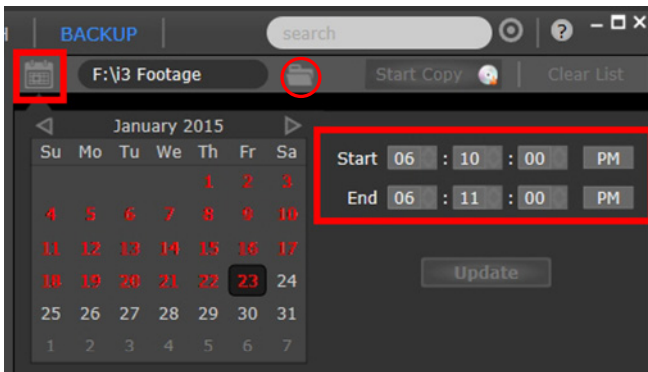
To create a backup while in Quick Search, drag the green arrow (start) and red arrow (end) to the specific time you want then click Burn CD or Add List.



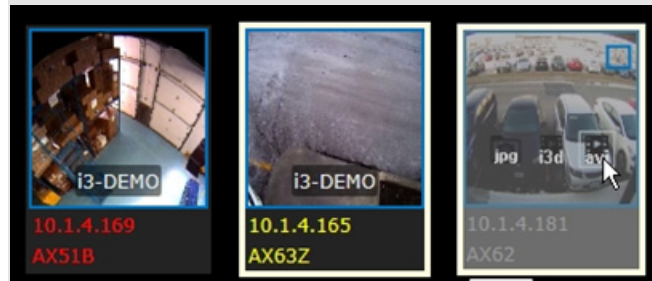
To view different dates click the SEARCH tab then the Calendar icon . Dates in RED have video that can be viewed. Dates in GREY have no video.



Backups can also be created from the BACKUP tab. Click the Calendar icon to select the date, then enter the preferred time. Destination of backup can be changed by clicking the Folder icon .

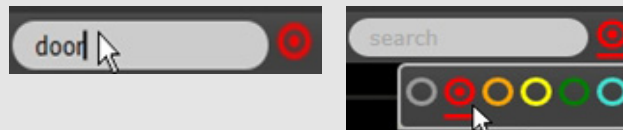


Cameras will appear on left. Select AVI , i3d Or JPG (screen shot). Then click Start Copy

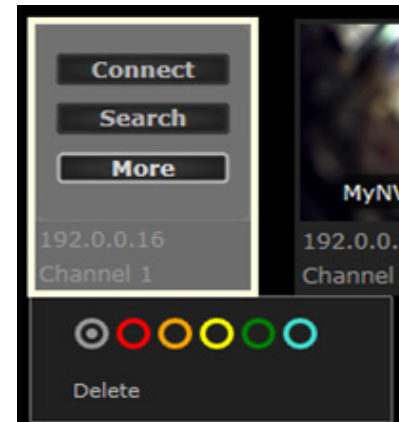


(Optional)

The Search bar can be used to find specific camera models or channel names (all similar models/names will be displayed first). Cameras can also be searched by Color Tag



To add a Color Tag to a camera, click the Control Tab in the top menu then from the left panel click Cameras. Then place mouse over desired camera. Click the "More" button and you'll see the Color Tag option displayed.



For more help/options please click the Help Icon in top right corner of VPC

