

## Launch VPC

To launch VPC, double-click VPC icon on the Desktop.



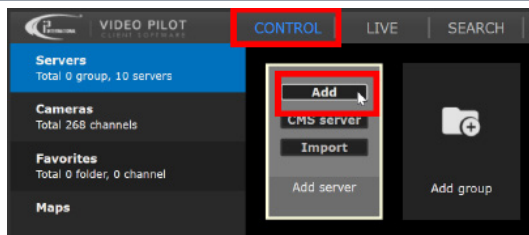
If your VPC is secured with user password, enter your VPC Username and Password and click LOGIN.

If running VPC locally, on the NVR, click **Login** in the top right corner to access Search and Backup. Enter your NVR user name and password and click **Login**.

**Note:** Skip this step when connecting to a remote server.

## Add new Server

To add a new SRX-Pro Server connection, click on the CONTROL tab and, hover over **Add server** tile and click **Add**.



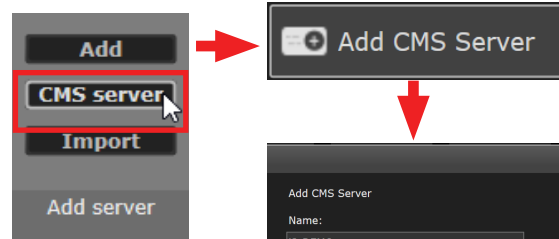
Fill out remote server connection information and click **Add**.

**Note:** If you do not have this information, contact your system integrator/administrator. Skip above step is viewing local video (localhost) only.

## Add CMS domain Servers

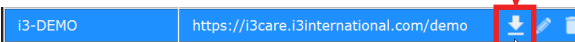
i3 CMS subscribers can import all SRX-Pro NVRs connecting to their domain in one step.

To add all SRX-Pro Servers from CMS domain, click on the CONTROL tab and, hover over **Add server** tile and click **CMS server** > **Add CMS Server**.



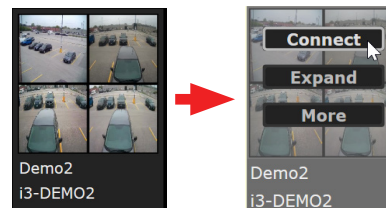
Fill out CMS Server server connection information and click **Save**.

Click **Download** to import all SRX-Pro connections from CMS Server.



## View Live video

In CONTROL tab, hover over the added Server tile and click **Connect**.



To change screen division click this icon next to the Search bar and select the number of cameras to view on screen.



## Quick Menu

To view camera's quick menu panel, hover your mouse over the camera image.

- Snapshot. Save the current frame as \*.jpg
- PTZ. Enable/disable on-screen PTZ controls.
- HD. Toggle between Main (HD) and sub streams
- See linked cameras. Map must already be configured.
- Toggle the POS text overlay on/off.
- Quick Search

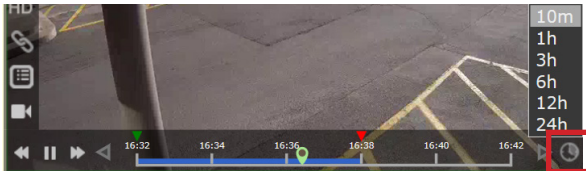
## Quick Search (current day)

To enable Quick Search, hover the mouse over the camera image and click on the magnifying glass.



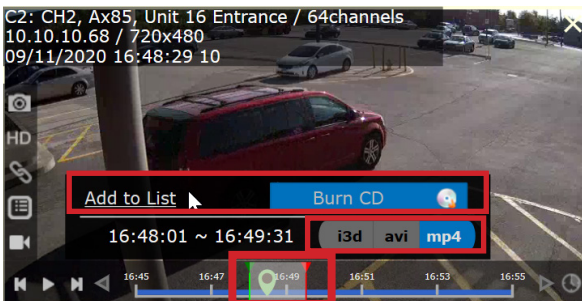
**Note:** Quick Search is limited to the current 24-hour day.

Scroll UP or DOWN to zoom in and out of the timeline or click on the Interval icon and select preferred option - from 10 min to 24 hrs.



To create a backup in Quick Search:

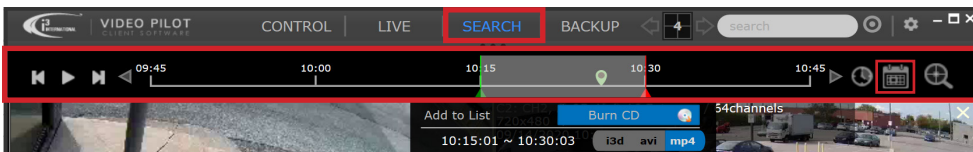
1. Drag the green (start) and red (end) triangles to mark the beginning / end backup clip.
2. Select backup format: **i3d**, **avi** or **mp4**.
3. Click on **Burn CD** or **Add to List**. If using *Add to List* option, see Backup section to learn how to complete the backup in the Backup List.



## Search (Calendar)

To search video recorded on a different date, click SEARCH , then the Calendar icon (top right corner). Click on your preferred date. Dates in **RED** have video that can be viewed. Dates in **GREY** have no video.

To zoom in and out of the timeline or to create a backup for all channels at once, use instructions from the Quick Search section.



## Backup

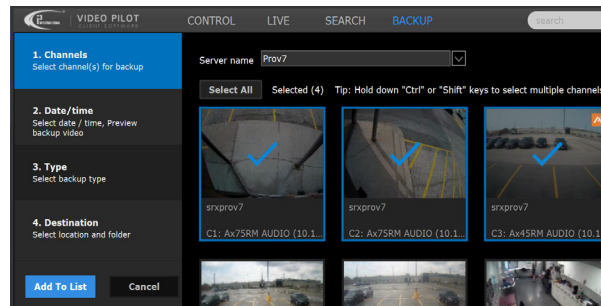
To create a video backup from scratch or complete backups created in Quick Search or Search tab, click BACKUP

To complete previously created sessions, click **Start backup**

Wait until **Ready** changes to **Finished**

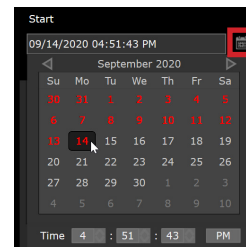
To create a new Backup from scratch, click **Add a Backup**

1. Select one or more channels.  
*Tip: Hold down "Ctrl" or "Shift" keys to select multiple channels.*

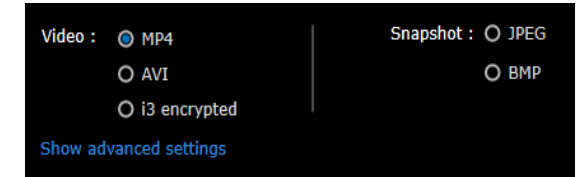


2. Click **2. Date/time**. Set the Start and End date and time for the backup clip. Click inside the date/time field or click on the Calendar icon .

In the calendar, select your preferred date and enter the Time, to a second. Repeat for both Start and End date/time.



3. Click **3. Type** and select the video format: MP4, AVI or i3 encrypted (tamper-proof format).  
*Optional: Click Show advanced settings to edit embedded text (MP4/AVI only) or select Main/Sub stream for backup.*



4. Click **4. Destination** and choose where the video will be saved: Local PC (NVR, if running VPC locally), Local Dropbox (mapped Dropbox folder on your PC), CD/DVD, or Server Storage (D:\i3backup folder on the remote NVR).  
If saving to Local Storage, select the backup destination folder .

5. Click **Add To List** then click **Start backup** to finish the backup.

## (OPTIONAL) Advanced Search

For quicker and more precise search, use advanced search options, such as Heatmap and AiSearch, or legacy Interval, Object, Index (Sensor and VA).

In the SEARCH tab, select one channel (multi-screen or full screen mode) and click on the precision magnifying glass icon , then select advanced search option.

