

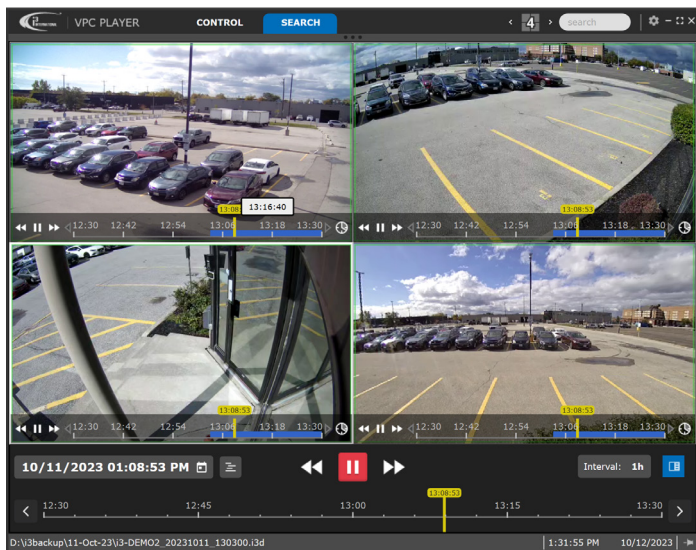
You need VPC Player to play i3's encrypted video (.i3d and .i3c). This is the best way to backup video securely and efficiently.

Benefits:

- Encrypted video cannot be edited
- You can save and play multiple cameras in one file at the same time.



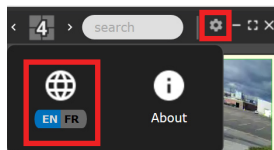
Each backup has a copy of VPC Player. Just open the shortcut in the backup folder. The latest backup in the folder will play automatically.



Change language

To switch to English or French interface,

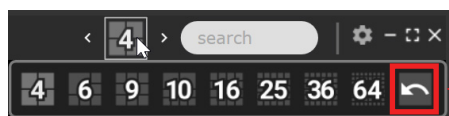
click the Settings icon and then the EN/FR icon.



Change screen division

The backup video will play all channels automatically. Double-click any channel to see it in **full screen**. To go back to see more channels, double-click again.

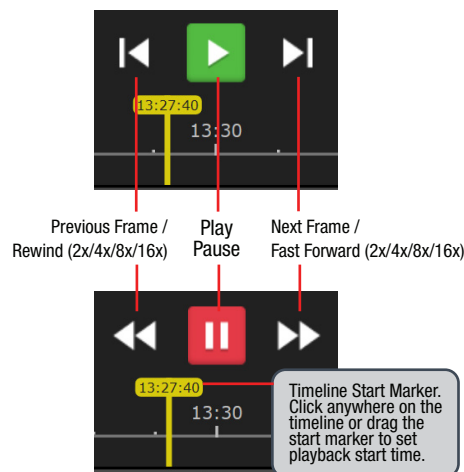
You can change how many channels you see at once. Click on the icon for screen division and choose your option.



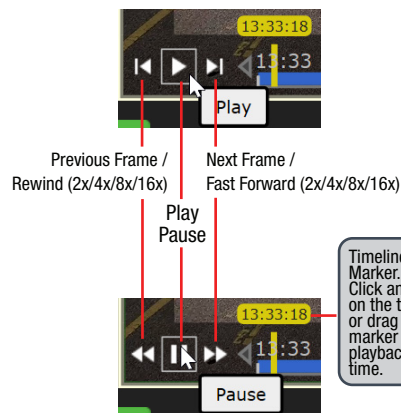
Drag-and-drop channels to re-arrange them on the screen. Click the **Default** icon to go back to default channel order.

Playback controls

Universal playback controls at the bottom of the screen control all channels at once. Click **Play** to start video playback. Click Fast Forward/Rewind repeatedly to increase/decrease the playback speed up to 16 times.



Each channel has its own set of playback controls. Hover over any channel to see them. When using these controls, only one channel will be playing at-a-time, the rest will remain paused.

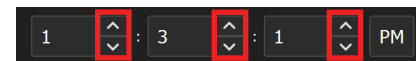


Calendar

Click the Calendar icon to display the Calendar window. If you have backed up multiple days of recording, use Calendar to view video from a different day. Days in red have video recording.

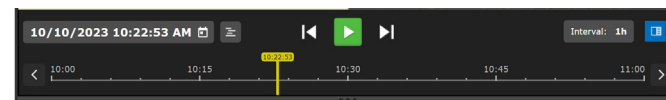
10/11/2023 01:50:05 PM

Adjust the playback start time using the Up/Down arrows in the calendar clock.

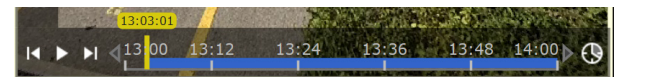


Timeline

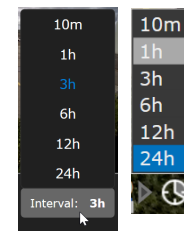
Universal timeline at the bottom of the screen controls all channels at once.



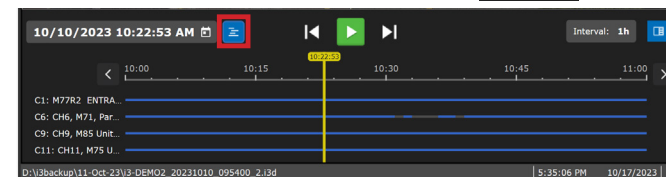
Each channel also has its own timeline. *Note:* When using channel's own timeline, the rest of the channels will be paused.



To zoom In/Out of the timeline, hover over it and scroll your mouse wheel Up/Down. You can also use the **Interval** option on the universal and individual channel timelines.

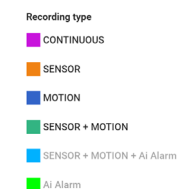


To view recording timeline for all channels in the universal timeline, click on the Multiple Timelines icon next to the Calendar.



The timeline for each channel shows a visual representation of the video recording. Color indicates video recording type.

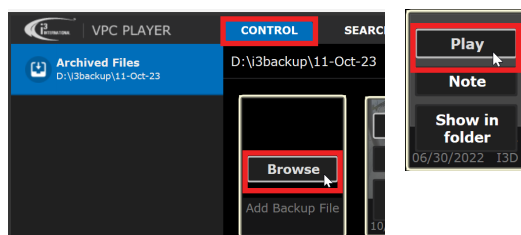
- Continuous - Magenta (Pink)
- Motion - Navy Blue
- Sensor - Orange
- Sensor+Motion - Green
- Sensor+Motion+i3Ai - Light Blue
- i3Ai - Neon Green



Play a different clip

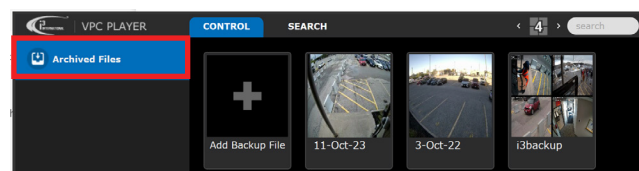
To select a different encrypted backup clip,

1. Go to **CONTROL** tab
2. Hover over Add Backup File tile and click **Browse** and select a folder with *.i3d / *.i3c backup clips.



Note: All backup media will be displayed (*.i3d, *.i3c, *.mp4, *.avi and *.jpg). JPG snapshots can be viewed in VPC Player.
*.mp4 and *.avi clips will be opened in your Windows Media Player.

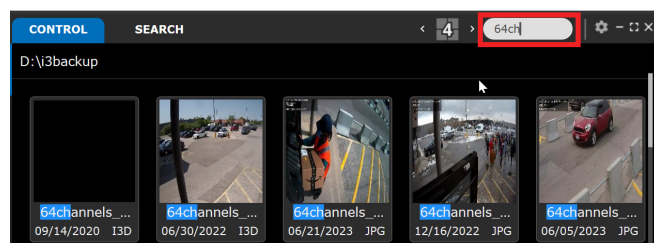
3. Hover over the *.i3d/*.i3c backup clip tile and click **Play**.
4. To Browse through another backup folder, click on **Archived Files** tab.



Search bar

Search bar allows quickly locating backup files and channels. Start typing in the search bar and the list of results will be updated dynamically as you type.

Search by file name, server name, or channel name.

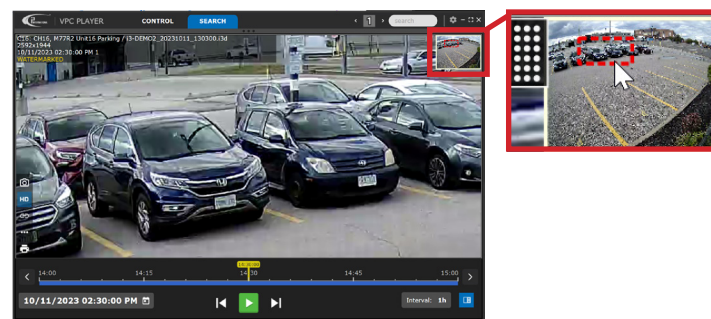


Digital Zoom

To zoom into the live video, double-click on the channel to bring it into Full Screen mode.

To Zoom In/Out of the video, hover over it and scroll your mouse wheel Up/Down. A small Preview window will be shown in the top right corner.

Use the mouse cursor to move the zoomed-in image around the screen. You can also drag the red rectangle inside the preview window to focus on the highlighted area.



Fisheye PTZ Controls

i3 Fisheye camera video can be manipulated using the on-screen PTZ controls. Hover over the video to display the quick menu.

Click on the **PTZ** icon to enable on-screen PTZ controls.

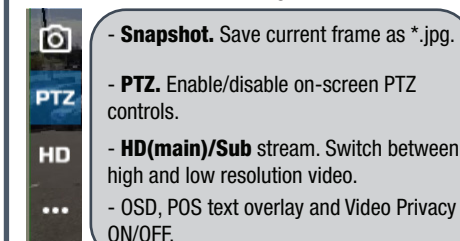
Click on the directional arrows to move around the recorded fisheye video.

For digital zoom, use the zoom In/Out icons or scroll your mouse wheel Up/Down.



Quick menu

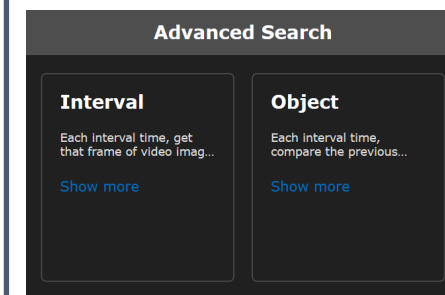
To view camera's quick menu panel, hover your mouse over the camera image.



Advanced Search

VPC Player supports Interval and Object advanced search functions. Use the full version of VPC for more advanced search features, e.g. Color Search, Heatmap, Ai Object Detection, etc.

Double-click a channel to bring it into a Full Screen view. Click on the Advanced Search icon to display Advanced Search panel.



Interval Search: Show a series of thumbnails at a predetermined time interval for a storyboard effect. Interval selection ranges from 1 second to 1 hour.

Object Search: Set the search time period and draw a motion grid on the image using your mouse cursor. A list of video frames with significant motion in the selected area during set time period will be displayed. For best results, use on video recorded indoors, with the constant light source.