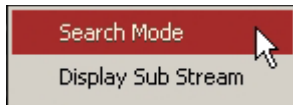


## Video Search and Playback on Live Mode (Quick Search)

In **Live** mode, double-click your desired video channel to bring it into Full Screen mode. Right-click on the video image and select "Search Mode".



24-hour Timeline will be displayed. The colored bar represents video recording. Timeline is fully zoomed in. To search beyond displayed time frame, right-click on the timeline and select **Zoom Out**. Repeat, if needed.



Channel #    Colored bars show video recording.    Red oval marks the playback start time.    Video Playback Control buttons: **Reverse, Stop, Play**

Hover your mouse cursor over the timeline to view the time stamp of the spot where the cursor is pointing to. Left-click on the timeline to select the playback start time. Click one of the control buttons to start viewing the video recording (Reverse, Play, Stop)

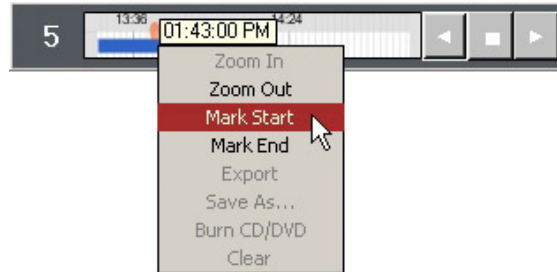
Click the **Play** button to start/resume playback. Click again to increase the playback speed (1X, 2X, 4X, 8X, 16X)

To stop playback, click the **Stop** button

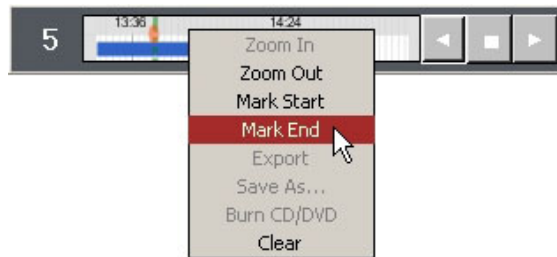
Click the **Reverse** button to reverse playback. Click again to increase the playback speed (1X, 2X, 4X, 8X, 16X)

## Instant CD/DVD Backup on Live Mode

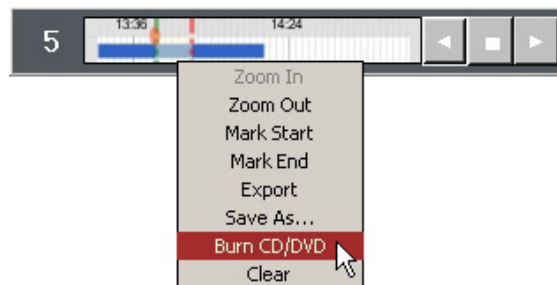
**Step 1.** Position mouse cursor directly above the beginning of the incident on the timeline. Right-click and select **Mark Start**.



**Step 2.** Position mouse cursor directly above the end of the incident on the timeline. Right-click and select **Mark End**.



**Step 3.** Right-click and select **Burn CD/DVD**.

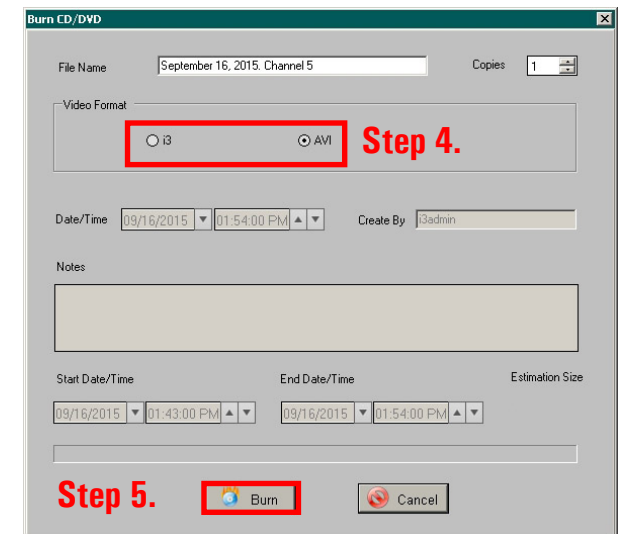


**Step 4.** In the **Burn CD/DVD** window, select **AVI** under Video Format.

*Note: Very long AVI video clips may not fit onto your CD-R or DVD-R media.*


**Step 5.** Click the **Burn** button. Wait while the clip is being burned to your CD-R/DVD-R. Once the backup is complete, the disk will be automatically ejected. Remove the disk from the optical drive and replace it with the new blank CD-R/DVD-R.

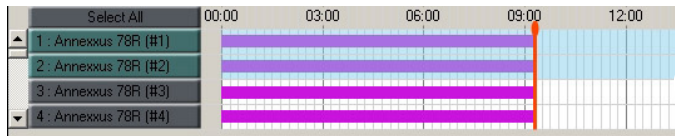
*Note: You will not be able to add additional backup videos to the same CD/DVD media. Only the latest recorded video backup file will be viewable from your media. All data previously recorded to the CD/DVD media will be lost.*



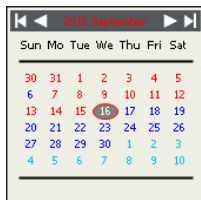
## Video Search and Playback in Search Mode

If an incident has occurred before 12AM of the current day or if you'd like to view recorded video from multiple cameras at the same time, use the Search Mode:

In **Search**  mode, select the camera(s) that you would like to search by clicking on the corresponding channel button(s). Scroll to see additional channels past Channel 4. As you select the cameras for review, the channel buttons and their corresponding row will be highlighted blue. In this example, Channels 1 and 2 are selected.



Next, use keyboard or mouse cursor to select the day of the incident in the Calendar panel and set the start time of the incident on the Clock panel below.



The days in red color contain video recording.  
The days in blue color contain no video recording.  
The day in a filled gray oval is the day selected for review.  
The day circled with a red line is the current calendar day.

Click the **Play**  button to start viewing the video.

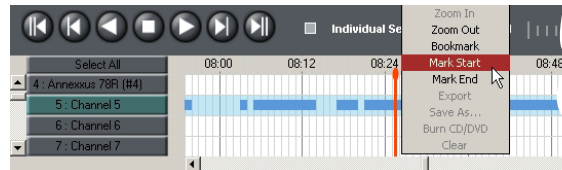
Use the Speed slider to increase/decrease playback speed. Use playback control buttons to Stop or Reverse playback, or view video recording frame-by-frame.



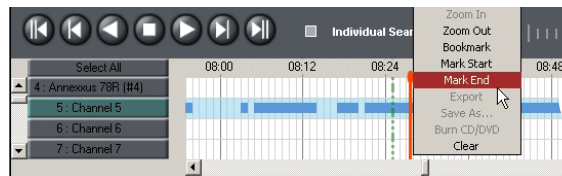
## Instant Backup in Search Mode

To save **AVI** video backup clip(s) from one or more cameras to your **USB drive**, start by clicking on the corresponding channel button(s) to select desired camera(s). Individual AVI clips will be created for each selected camera. Next, select the day of the incident in the Calendar panel.

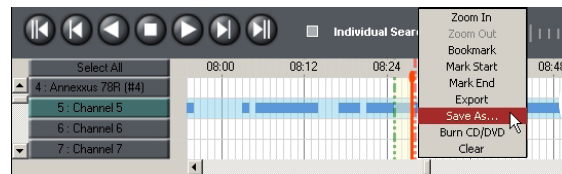
**Step 1.** Position mouse cursor directly above the beginning of the incident on the timeline. Right-click and select **Mark Start**.



**Step 2.** Position mouse cursor directly above the end of the incident on the timeline. Right-click and select **Mark End**.

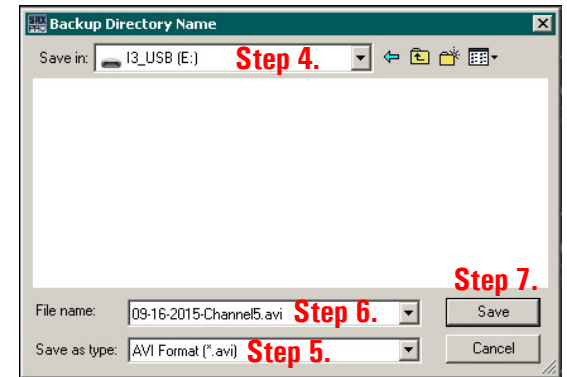


**Step 3.** Right-click over the selected portion of the timeline and **Save As**.



Make sure your USB drive is plugged into your SRX-Pro Server unit.

**Step 4.** In the **Save in** drop-down menu, select your USB drive.



**Step 5.** In the **Save as type:** drop-down menu, select **AVI Format (\*.avi)**.

**Step 6.** Enter a descriptive file name in the **File name:** field.

**Step 7.** Click **Save**.

**Step 8.** Backup icon will appear in the SRX-Pro Server status bar, indicating backup in progress. Do **NOT** unplug your USB drive until the Backup icon disappears.

*Note: Backup of AVI clips can take several minutes, depending on the clip length. Remain patient.*

