



Master Integration List for IP Cameras and Encoders

About GiPi

Generic IP Integration (GiPi) is i3's solution to fast IP video device integration with SRX-Pro Server software. By utilizing GiPi module, i3 is able to rapidly integrate with new IP cameras/encoders without having to release a new version of the SRX-Pro Server. A new executable GiPi file is released every time new IP cameras/encoders are added to the supported list.

The latest GiPi adapter file can be downloaded from our website: <http://i3international.com/download>, under SRX-Pro Add-ons.

Important Notes:

- h.264 codec is supported by SRX-Pro Server v.2.1 and higher.
- ONVIF GiPi feature is supported by SRX-Pro Server v.3.2.1 and higher. Provided that the manufacturer's IP device closely follows the ONVIF standard, i3's GiPi has a method of connecting to the third-party ONVIF-compliant IP video devices. See pp. 13-14 of this bulletin for instructions on how to use this feature.
- GiPi adapters released after September 14th, 2016 are not compatible with Windows XP.
- The total number of IP cameras supported at the same time by the SRX-Pro Server is subject to the purchased software license, and a combination of the following variables: SRX-Pro version, IP camera Manufacturer and Firmware version, the combination of resolution and frame rate settings used by the camera(s).
- The following special characters are not supported and may not be used in the IP device's login or password: ~ , . ; () [] { } - = ! @ # \$ % ^.
- GiPi adapters released after May 3, 2018 automatically stop and re-start SRX-Pro Service during the update process.

ONVIF support specifications and limitations, where supported by camera:

Discovery: Supported

Network settings setup: Supported

Video settings (resolution, frame rate): Supported

PTZ - Pan Tilt Zoom with continuous, Relative and absolute modes: Supported

PTZ - Iris/Focus: Currently not supported

PTZ - Set/Get preset: Currently not supported

Sub-stream: Supported

Channels support: 1/multi-channel

Supported codecs: h.264/MPEG4/MJPEG

Glossary:

- **Tested Models:**
i3 International has tested the GiPi integration with these camera/encoder models.
- **Compatible Models:**
The type of firmware on these IP devices is compatible with the camera/encoder models that have been tested by i3 International. As a result, there is a high likelihood that cameras/encoders in this list will also be supported by i3 GiPi module.
- **Discovery:**
Yes – Use Search / Search & Add function on SRX-Pro Server to automatically detect your connected IP device.
No – Use Add / Manual Add function on SRX-Pro Server to enter your IP camera/encoder's brand, IP address, login and password, and other relevant information.
- **PTZ & Presets:**
Yes – Both the camera and GiPi module support PTZ functionality and/or storage of Presets
No – Either the camera or GiPi module does not support PTZ functionality and/or Preset storage
- **#of chnls**
Number of video channels offered by the integrated IP device and supported by GiPi.
- **# of strms per chnl**
Number of video streams per channel, supported by both the integrated IP device (where applicable) and by GiPi.

CONTACT

www.i3international.com
Toll free: 1.866.840.0004
Tel: 416.261.2266
Fax: 416.759.7776

CANADA

i3 International Inc.
780 Birchmount Rd,
Unit 16, Toronto, ON,
M1K 5H4

USA

i3 America (Nevada) Inc.
4450 Witmer Industrial
Estates, Unit 4, Niagara
Falls, NY 14305



Manufacturer	Tested Models	Compatible Models	Discovery	PTZ & Presets on Compatible Models	# of chnls	# of strms per chnl	Supported codecs / Notes
i3 International	Annexus 32VD1 Annexus 32V2M2 Annexus 32V2M4 Annexus 32V2M8	All Annexus 32 series	Yes	No	1	2	h.264/MJPEG For save/reboot support, use SRX-Pro 3.0 or higher. Save HTTP Port function is not supported on FW v.4.0 and higher.
	Annexus 46R Annexus 46DC Annexus 66R	All Annexus 46 and Annexus 66 series	Yes	No	1	2	h.264/MJPEG For save/reboot support, use SRX-Pro 3.0 or higher
	Annexus 516	All Annexus 5xx series	Yes	Yes	16	2	
	Annexus 36	All Annexus 36 series	Yes	Yes	11	14	MPEG4/MJPEG
	Annexus 49 Annexus 50 Annexus 51 Annexus 52 Annexus 52C	NA	Yes	No	1	3	h.264/MPEG4/MJPEG
	Annexus 40W Annexus 61 Annexus 62 Annexus 62C	NA	Yes	No	1	3	h.264/MJPEG
	Annexus 63Z	NA	Yes	Yes	1	3	h.264/MJPEG Firmware 0.1.4536, or higher. New default account i3admin/i3admin - FW ver. ANNEXUS 63Z.0.1.5025
	Annexus 73RM	NA	Yes	Yes (Zoom and Focus)	1	3	h.264/MJPEG
	Annexus 68R Annexus 78R	NA	Yes	Yes	4	2	h.264/MJPEG The number of channels and number of streams is camera mode-dependent.
	Annexus 45R Annexus 65R	All Annexus 45 and Annexus 65 series	Yes	Yes (Zoom and Focus)	1	3	h.264/MJPEG For Zoom and Focus support, use SRX-Pro 3.5 or higher
	Annexus 47R Annexus 47R2 Annexus 47R4 Annexus 67R	All Annexus 47 and Annexus 67 series	Yes	No	1	3	h.264/MJPEG
	HR16 / Veo17	NA	Yes	Yes	16	2	h.264
	Annexus 48DC	NA	Yes	No	1	2	h.264/MPEG4/MJPEG This product is not yet available for purchase
	Annexus 65Z	NA	Yes	Yes	1	3	h.264/MJPEG This product is not yet available for purchase
	Annexus 75RM	NA	Yes	No	1	3	h.264/MJPEG This product is not yet available for purchase

CONTACT

www.i3international.com
Toll free: 1.866.840.0004
Tel: 416.261.2266
Fax: 416.759.7776

CANADA

i3 International Inc.
780 Birchmount Rd,
Unit 16, Toronto, ON,
M1K 5H4

USA

i3 America (Nevada) Inc.
4450 Witmer Industrial
Estates, Unit 4, Niagara
Falls, NY 14305



Manufacturer	Tested Models	Compatible Models	Discovery	PTZ & Presets on Compatible Models	# of chnls	# of strms per chnl	Supported codecs / Notes		
i3 International (cont.)	Annexus 83 Annexus 85	NA	Yes	Yes	1	3	h265/h264/MJPEG for h265 support, use SRX-pro 7.0 or higher. Maximum supported frame rate is 15fps (for sub stream support) Pending release		
	Annexus 98	NA	Yes	Yes	5	1	h264/MJPEG The number of channels and number of streams is camera mode-dependent. Pending release		
3xLogic	VX-4V28-OD-I	NA	Yes	No	1	2	h.264		
ACTi	ACM-4201 ACM-3701	NA	Yes	No	1	1			
	E96	NA	Yes	No	1	1	h.264/MJPEG		
Arecont	AV8185DN	AV8180 AV8185 AV20185DN AV8360 AV8365 AV8365DN AV20365DN	No	No	4	2	h.264/MJPEG		
	AV3155	NA	No	No	1	2	h.264/MJPEG		
	AV5105DN AV2000 AV2100 AV3100 AV5100	NA	No	No	1	2	MJPEG		
	AV12176DN-28	NA	No	No	4	2	h.264/MJPEG		
AXIS	Q1755	All camera models with Firmware 4.xx/5.xx	Yes	Zoom only	1	Unlim.	h.264/MJPEG		
	M1031-W P3301 211			No					
	214 Q6035-E 241Q M7001 209MFD			Yes					
	M3007-PV 360			All fisheye 360° camera models with FW v.5.xx				4	1
	M3027-PVE 360			All fisheye 360° camera models with FW v.6.xx				4	1
BASLER	BIP-1300c BIP2-640c-dn BIP2-1000c-dn BIP2-1300c-dn BIP2-1600c-dn	all BIP- and BIP2-models should be supported	Yes	No	1	1	h.264		

CONTACT 

www.i3international.com
Toll free: 1.866.840.0004
Tel: 416.261.2266
Fax: 416.759.7776

CANADA 

i3 International Inc.
780 Birchmount Rd,
Unit 16, Toronto, ON,
M1K 5H4

USA 

i3 America (Nevada) Inc.
4450 Witmer Industrial
Estates, Unit 4, Niagara
Falls, NY 14305





Manufacturer	Tested Models	Compatible Models	Discovery	PTZ & Presets on Compatible Models	# of chnls	# of strms per chnl	Supported codecs / Notes
Bosch	NDC-265-P	NBC-225-P NBC-255-P NBC-255-W NTC-255-PI NDC-225-P NDC-255-P NDC-225-PI NBC-265-P NBC-265-W NTC-265-P NDC-265-P NDN-265-PIO	No	No	1	3	h.264/MJPEG Firmware limitation: slow streaming refresh rate.
Brickcom	WCB-502Ap	NA	No	No	1	3	h.264/MPEG4/MJPEG (Note: Two sub-streams are recognized as separate channels)
	VD-130Ap FB-100Ap FB-130Np	CB-100Ap CB-101AP CB-102AP FB-300Np FD-100Ap FD-130Np FD-132Np FD-300Np GOB-100Ap GOB-130Np GOB-132Np GOB-300Np GOB-302NP MD-100Ap MD-300Np OB-100AP OB-130Np OB-132Np OB-300Np OB-302Np VD-100Ap VD-130Np VD-132Np VD-300Np WCB-100Ap WFB-100Ap WFB-130Np WOB-100Ap WOB-130Np WOB-132Np WOB-300Np WOB-302Np	Yes	No	1	1	h.264/MPEG4/MJPEG
Canon	VB-C60	VB-C300 VB-C500 VB-C50i VB-C50iR VB-C50FSi	No	Yes	1	1	MJPEG

i3 INTERNATIONAL TECHNICAL BULLETIN

Technical Bulletin # 180628-SW-02

CONTACT 

www.i3international.com
Toll free: 1.866.840.0004
Tel: 416.261.2266
Fax: 416.759.7776

CANADA 

i3 International Inc.
780 Birchmount Rd,
Unit 16, Toronto, ON,
M1K 5H4

USA 

i3 America (Nevada) Inc.
4450 Witmer Industrial
Estates, Unit 4, Niagara
Falls, NY 14305

Manufacturer	Tested Models	Compatible Models	Discovery	PTZ & Presets on Compatible Models	# of chnls	# of strms per chnl	Supported codecs / Notes
Canon (cont.)	VB-M40	VB-M600VE VB-M600D VB-M700F				2	h.264/MJPEG For h.264 codec support, use SRX-Pro 3.1 or higher
	VB-H41 VB-H43	VB-H series	No	Yes	1	2	
	VB-H630D VB-H730F		No	No	1	2	
	VB-S30D	VB-S series	No	Yes	1	2	
CNB	IDP4000VR IDC4000T	IBP5030CR IDB4110NVF/PVF IDC4050F IDC4050IR IDC4050VF IDC4050VR IDP4000VD IDP4030VR IGB1110NF/PF IGC2050F IGP1000F IGP1030 JJB2000 INS2000 IPM3063N/P ISMC1063N/P ISS2765NW/PW ISS2965NXW/PXW IVB4110NVF/PVF IVC5055VR IVP4000VR IVP4030VR	Yes	No	1	2	h.264/MPEG4/MJPEG
FINE	CDV-3VM501	CDV-3V930 CDV-3VM301 EDH-01 HLV-1CAG MD-D1200 MD-D1612 TCMA-99 TCMP-99 TCP-670DNU TCP-680DNU TCP-690DNU TCP-690U TCP-HP930 TCP-HP960 TCP-IPWD690 TCP-IR590 TCP-IRH5030 TCP-IRV540 TCP-IRV560 TCP-IRWH540 TCP-M912DN TCP-MH802 TCP-VM201 TCP-VM501 WB-8211SD WB-8412(SD)	Yes	No	1	1	h.264/MPEG4/MJPEG

CONTACT 

www.i3international.com
Toll free: 1.866.840.0004
Tel: 416.261.2266
Fax: 416.759.7776

CANADA 

i3 International Inc.
780 Birchmount Rd,
Unit 16, Toronto, ON,
M1K 5H4

USA 

i3 America (Nevada) Inc.
4450 Witmer Industrial
Estates, Unit 4, Niagara
Falls, NY 14305



Manufacturer	Tested Models	Compatible Models	Discovery	PTZ & Presets on Compatible Models	# of chnls	# of strms per chnl	Supported codecs / Notes
FINE (cont.)		WB-H811 WB-H812 WB-H814 WB-H818					
FlexWATCH	FW1174	NA	No	No	1	1	h.264
FLIR	FC-334-R	FC series	Yes	No	1	1	h.264/MJPEG/MPEG4 Network setting must be saved via web interface. Applies to Nexus Server 2.5.17.13 or higher; BU version 1.1.2 and higher
	FC-D-625	D series	Yes	No	4	1	
Foscam	FI9853EP	NA	No	No	1	2	h.264 Note: 640x360 and 320x180 resolutions are not supported
GANZ	ZN-C2M ZN-DT2MA	NA	Yes	No	1	2	h.264/MJPEG
Geovision	GV-VD320D	All	Yes	No	1	2	h.264/MJPEG
Grandeye	ONCAM IPT	NA	No	Yes	1	1	MJPEG
HIKVISION	DS-2CD2112i DS-2CD7253F-EIZ	DS-2CD2XXX-series, DS-2CD7XXX-series, DS-2CD8XXX-series FW v. 4.0 or higher only	Yes	Yes	1	2	h.264/MJPEG For save/reboot/ptz support, use SRX-Pro 3.0 or higher
	DS-6515	NA	No	No	16	2	All settings must be set and saved via encoder's web interface.
	DS-2CD6332FWD-IV DS-2CD6362F-IV	DS-2CD6XXX-series	Yes	Yes	5	1	h.264/MJPEG
	DS-7216HGHI-SH	NA	Yes	Yes	18	2	h.264
IQinVision	IQ04xx IQ510 IQ70x IQ75x IQ85x IQA2xx IQD4xx	IQ51x IQ54xx IQ73xx IQ8xx IQ83xx IQA1xxf	No	No	1	1	MJPEG
	IQA3xx IQD3xx IQM3xx IQ732N IQ832S						h.264/MJPEG
	IQA31W IQA32WA IQA33WA IQD51W IQD52W IQD53W IQD55N	IQA3x IQD5xx					h.264/MJPEG

CONTACT 

www.i3international.com
Toll free: 1.866.840.0004
Tel: 416.261.2266
Fax: 416.759.7776

CANADA 

i3 International Inc.
780 Birchmount Rd,
Unit 16, Toronto, ON,
M1K 5H4

USA 

i3 America (Nevada) Inc.
4450 Witmer Industrial
Estates, Unit 4, Niagara
Falls, NY 14305



Manufacturer	Tested Models	Compatible Models	Discovery	PTZ & Presets on Compatible Models	# of chnls	# of strms per chnl	Supported codecs / Notes
Infinova	V6201-N V6621-N V1726N-N	All N-series models	No	Yes	1	1	h.264/MJPEG
JVC	VN-V25U VN-V685U VN-X35U	VN-V686U VN-V686BU VN-V26U VN-V225U VN-X235U	No	Yes	1	1	MJPEG
Micropower	MPT2700 Minihub MPT2720 Minihub	NA	No	No	4	4	MJPEG
MOBOTIX	M24M-SEC	NA	Yes	No	1	1	MJPEG
ONVIF Note: Supported only on SRX-Pro Server v.3.2.1 and higher	Avigilon 1.0W-H3PTZ-DC20	ONVIF-compatible models	No	Yes	1	2	h.264/MJPEG
	Avigilon 2.0-H3M-DO1		No	No	1	2	h.264/MJPEG
	Avigilon 2.0-H3M-DC1		No	No	1	3	h.264/MJPEG
	Avigilon 12W-H3-4MH-DP1-B		No	No	4	2	h.264/MJPEG
	AVTECH AVM428B		No	No	1	2	h.264
	AVTECH AVN420N		No	No	1	2	h.264/MPEG4
	Bosch NDC-265-P FLEXIDOME HD FLEXIDOME IP		Yes	No	1	3	h.264/MPEG4/MJPEG
	Canon VB-M40, VB-S30D, VB-H43		Yes	Yes	1	2	h.264/MJPEG
	Canon VB-H630D, VB-H730F		Yes	No	1	2	h.264/MJPEG
	DAHUA IPC- HFW4300SN-0360B		Yes	No	1	2	h.264/MJPEG
	Digital Watchdog DWC-MF21M8TIR		Yes	No	2	1	h.264/MPEG4/MJPEG
	FLIR T43		Yes	No	1	2	h.264/MJPEG
	Foscam FI9853EP		Yes	No	1	2	h.264 Note: 640x360/320x180 resolutions unsupported
	GANZ HSW-H37-4		Yes	No	1	2	h.264/MJPEG
	GANZ ZN-MD221M		Yes	No	1	2	h.264/MJPEG Note: Frame rate setting must be configured via the browser.
	GANZ ZN1-V4FN3 HD Indoor Pinhole		Yes	No	1	1	h.264/MJPEG
	Geovision GV-FER5302 Fisheye		Yes	No	1	2	h.264
	HIKVISION DS-2CD6332FWD-IV DS-2CD6362F-IV		Yes	Yes	5	1	h.264/MJPEG
March Networks C1801A (ATM camera)	Yes	No	1	2	Main Stream: h.264 Sub-stream: h.264/MJPEG Notes: - UN and PW must be configured - Camera and Client Date/Time and Time Zone must match within 1-2 mins. - Port 8000 must be used to add. Remove "-8000" from camera's IP address when accessing Web Setup from SRX-Pro Server.		

CONTACT

www.i3international.com
Toll free: 1.866.840.0004
Tel: 416.261.2266
Fax: 416.759.7776

CANADA

i3 International Inc.
780 Birchmount Rd,
Unit 16, Toronto, ON,
M1K 5H4

USA

i3 America (Nevada) Inc.
4450 Witmer Industrial
Estates, Unit 4, Niagara
Falls, NY 14305



Manufacturer	Tested Models	Compatible Models	Discovery	PTZ & Presets on Compatible Models	# of chnls	# of strms per chnl	Supported codecs / Notes
ONVIF (cont.)	Panasonic WV-SF336		Yes	No	1	2	h.264/MJPEG
	Samsung SND-5061, SND-7080R, SNO-7084R		No	No	1	2	h.264/MJPEG
	ViewZ VZ-PVM-I2B1		Yes	No	1	2	h.264/MPEG4/MJPEG
	Vivotek FE8172		Yes	No	1	2	h.264/MPEG4/MJPEG
	WatchNet MPIX-20VDV-IRM		No	No	1	2	h.264/MJPEG Must use admin/admin account and Port 9988
Panasonic	BB-HCM701A	BB-HCM715/735 BB-HCM705 BB-HCM701 BL-C230 BL-C210 BB-HCM7xx (firmware v.4.30R00 or later)	Yes	No	1	1	MPEG4/MJPEG
	WV-SF336	NA	No	Yes	1	2	h.264/MPEG4/MJPEG
	WV-NP304 WV-NS202 WV-NS202A WV-NW484 WV-NW502S WV-SF332 WV-SF335 WV-SF346	DG-GXE500 DG-SP305 DG-SP304V DG-SF335 DG-SF334 DG-SC385 DG-SP102 WJ-GXE500 WJ-NT304 WJ-NT314 WV-NF284 WV-NF302 WV-NP244 WV-NP502 WV-NP1000 WV-NS954 WV-NW964 WV-NW502 WV-SP306 WV-SP305 WV-SP302 WV-SC385 WV-SP105 WV-SP102	No	Yes	1	1	MPEG4/MJPEG
	WV-NP472 WV-NS324	WV-NS32x WV-NW47xS	No	Yes	1	1	MPEG4/MJPEG
	WV-NM100	NA	No	PTZ - Yes Presets - No	1	1	MJPEG. No RTSP support.
	IXE20DN	NA	Yes	No	1	2	h.264/MJPEG
	D5118	NA	Yes	Yes	1	2	h.264/MJPEG
	PD636E	NA	Yes	No	3	3	h.264/MJPEG
Samsung	SND-7080 SND-5080N SNB-5000N	NA	No	No	1	2	h.264/MPEG4/MJPEG
	SND-560	NA	No	No	1	2	MPEG4/MJPEG
	SNV-6048R	NA	Yes	No	1	2	h.264/MJPEG
	SNO-7084R	NA	Yes	No	1	2	h.264

CONTACT 

www.i3international.com
Toll free: 1.866.840.0004
Tel: 416.261.2266
Fax: 416.759.7776

CANADA 

i3 International Inc.
780 Birchmount Rd,
Unit 16, Toronto, ON,
M1K 5H4

USA 

i3 America (Nevada) Inc.
4450 Witmer Industrial
Estates, Unit 4, Niagara
Falls, NY 14305

Manufacturer	Tested Models	Compatible Models	Discovery	PTZ & Presets on Compatible Models	# of chnls	# of strms per chnl	Supported codecs / Notes
Sentry	IS-IP14K-DN	Sentry 360 Pro Series: IS-IP14K	Yes	No	1	2	h.264
	FS-IP3000	Sentry 360 Mini Series: FS-IP5000-M FS-IP3000-M	Yes	No	1	1->4	h.264/MJPEG
Scallop Imaging	D7-180	NA	No	No	1	2	h.264
SONY	SNC-CH120	5th Generation: SNC-CH110 SNC-CH120 SNC-CH140 SNC-CH160 SNC-CH180 SNC-CH210 SNC-CH220 SNC-CH240 SNC-CH260 SNC-CH280	No	No	1	2	h.264/MPEG4/MJPEG For h.264/MPEG4 codec support, use SRX-Pro 3.1 or higher
	SNC-DH240 SNC-DH120 SNC-DH210 SNC-RH124	5th Generation: SNC-DH120 SNC-DH120T SNC-DH140 SNC-DH140T SNC-DH160 SNC-DH180 SNC-DH220 SNC-DH220T SNC-DH260 SNC-DH240 SNC-DH240T SNC-DH280 SNC-DH110 SNC-DH110T SNC-DH210 SNC-DH210T SNC-RH124 SNC-RH164		Yes			
	SNC-RX530N	SNC-RX530 SNC-RX550 SNC-RX570 SNC-RZ50	No	Yes	1	1	
	SNC-CS3N SNC-CS11 SNC-CM120	SNC-CS50 SNC-DF50 SNC-DF80 SNC-DF85	No	No	1	1	
	SNC-CX600W SNC-EB600 SNC-EB600B SNC-EB630 SNC-EB630B SNC-VB600B SNC-VB600 (w/ SD) SNC-VB600B SNC-VB630 (w/ SD)	6th Generation	No	No	1	3	
	SNC-EM600 / EM601 SNC-EM630 / EM631 SNC-EM602R			Yes			

CONTACT

www.i3international.com
Toll free: 1.866.840.0004
Tel: 416.261.2266
Fax: 416.759.7776

CANADA

i3 International Inc.
780 Birchmount Rd,
Unit 16, Toronto, ON,
M1K 5H4

USA

i3 America (Nevada) Inc.
4450 Witmer Industrial
Estates, Unit 4, Niagara
Falls, NY 14305



Manufacturer	Tested Models	Compatible Models	Discovery	PTZ & Presets on Compatible Models	# of chnls	# of strms per chnl	Supported codecs / Notes
SONY (cont.)	SNC-EM632R SNC-VM600 SNC-VM600B SNC-VM630 (w/ SD) SNC-VM632R						
	SNC-HM662			Yes			h.264/MJPEG HTTP Port must be set and saved via web interface.
StarDot	SDH500BN	NetCam SC/XL Cameras	No	No	1	1	h.264/MJPEG
		Express 2/4 Video Server					
TOSHIBA	IK-WR01A	NA	No	No	1	1	MJPEG
Video Insight	DS-6516HF	DS-6516HF	No	No	16	2	h.264
ViewZ	VZ-PVM-I2B1	NA	No	No	2	1	h.264/MJPEG
VIVOTEK	FD8133 FD8134	IP8xxx FD8xxx SD8xxx All 8000 Series	Yes	Yes	1	4	h.264/MPEG4/MJPEG
	FE8172(V)	NA	Yes	No	1	3	
Watchnet	MPIX-20VDV-IRM	NA	Yes	No	1	2	h.264/MJPEG
Weldex	WDP-21BMP2	NA	Yes	No	1	1	h.264/MJPEG UPnP must be enabled on the camera to support Discovery. Device limitations: IP address and Port may not be changed at the same time. IP address conflict will cause device lock-up.

CONTACT 

www.i3international.com
Toll free: 1.866.840.0004
Tel: 416.261.2266
Fax: 416.759.7776

CANADA 

i3 International Inc.
780 Birchmount Rd,
Unit 16, Toronto, ON,
M1K 5H4

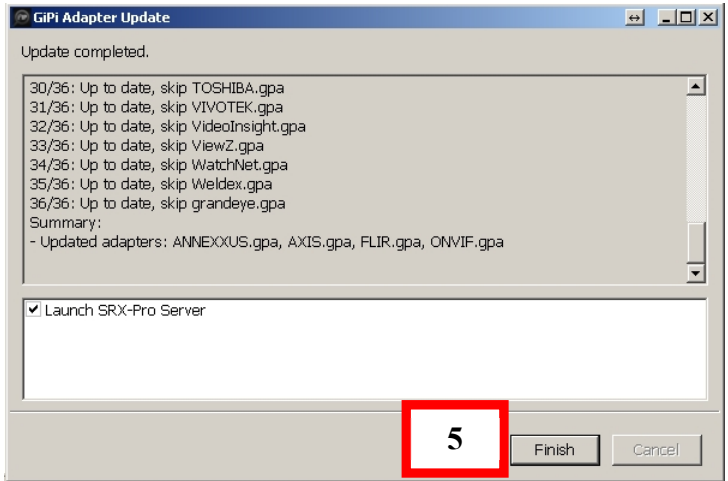
USA 

i3 America (Nevada) Inc.
4450 Witmer Industrial
Estates, Unit 4, Niagara
Falls, NY 14305

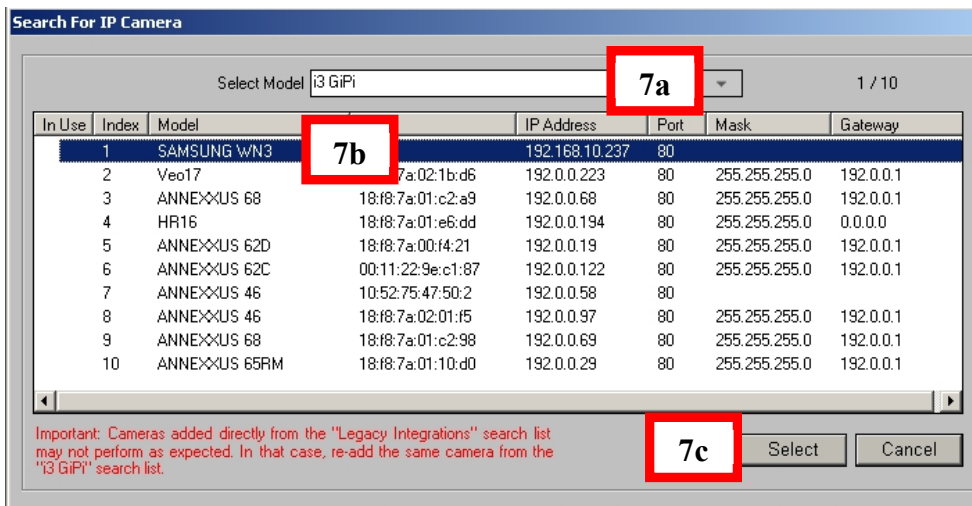


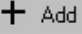
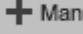
Connecting the integrated IP device (from the list above) to the SRX-Pro Server:

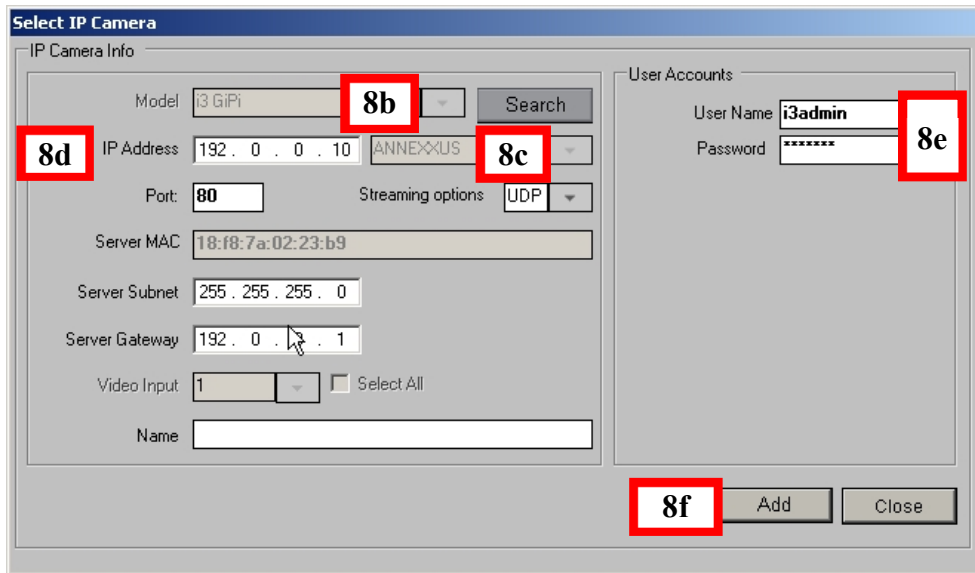
1. Download the latest GiPi file from i3 website: <http://i3international.com/download> under **SRX-Pro Add-ons** section.
2. If running SRX-Pro Server Full version, press **Ctrl + Shift + Alt + F4** and enter SRX-Pro administrative password to access the Desktop.
3. Extract the downloaded *.zip GiPi package and run the extracted *.exe GiPi file.
4. Click **Update** in the GiPi Adapter Update window. If running SRX-Pro Service, GiPi installer will stop SRX-Pro service automatically.
5. Wait until the GiPi adapter installation completes, and click **Finish** to close the GiPi window and to launch the SRX-Pro Server/Service (ensure that "Launch SRX-Pro Server/Service" checkbox is enabled).
6. Once SRX-Pro Server loads/SRX-Pro Service restarts, go to **Setup > IP Camera** setup page in SRX-Pro Server/Console. Depending on whether Discovery is supported by your IP device, you will need to either use **Search & Add** or **Manual Add** option to add your IP device. (If the **Discovery** status in the table above says "**Yes**" for your IP device model, proceed to Step 7. Otherwise, skip Step 7 and go to Step 8).
7. If the **Discovery** status in the chart above says "**Yes**" for your IP device model,



- a. Click the **Search** Search or **Search & Add** Search & Add button in the IP Camera tab.
- b. Make sure **i3 GiPi** is selected in the drop-down menu and let the SRX-Pro Server locate your connected IP device on the network.
- c. Once your IP device has been discovered, select it in the list and click **Select**. Next, go to step **8e**.



8. If the **Discovery** status in the chart above says “**No**” for your IP device model,
 - a. Click the **Add**  or **Manual Add**  button in the IP Camera tab.
 - b. Make sure **i3 GiPi** is selected in the Model drop-down menu.
 - c. Select the IP device manufacturer from the drop-down menu next to the IP Address field. In this case, “**Samsung**” has been selected.
 - d. Enter the **IP Address**.
 - e. Enter the **User Name** and **Password**.
 - f. Click the **Add** button.



9. Your IP device will be added to the All Cameras list in the lower half of the setup page. In the **Ch. In.** (Channel Input) drop-down menu, assign the added IP device to one or more video channels. In this example, the new Samsung camera has been assigned to Video Channel #1.

Camera	IP Address	Input	Resolution	FPS	Ch In.	Name
All Cameras						
ANNEXXUS 78						
ANNEXXUS 78	192.0.0.10 (80)	1	1280x1280	15	1. Channel 1	
ANNEXXUS 78	192.0.0.10 (80)	2	2048x768	10	<input checked="" type="checkbox"/> 1. Channel 1	
ANNEXXUS 78	192.0.0.10 (80)	3	1024x768	10	<input type="checkbox"/> 2. Channel 2	
ANNEXXUS 78	192.0.0.10 (80)	4	1024x768	10	<input type="checkbox"/> 3. Channel 3	
ANNEXXUS 78	192.0.0.10 (80)	5	1024x768	10	<input type="checkbox"/> 4. Channel 4	
					<input type="checkbox"/> 5. Channel 5	
					<input type="checkbox"/> 6. Channel 6	
					<input type="checkbox"/> 7. Channel 7	
					<input type="checkbox"/> 8. Channel 8	
					<input type="checkbox"/> 9. Channel 9	
					<input type="checkbox"/> 10. Channel 10	

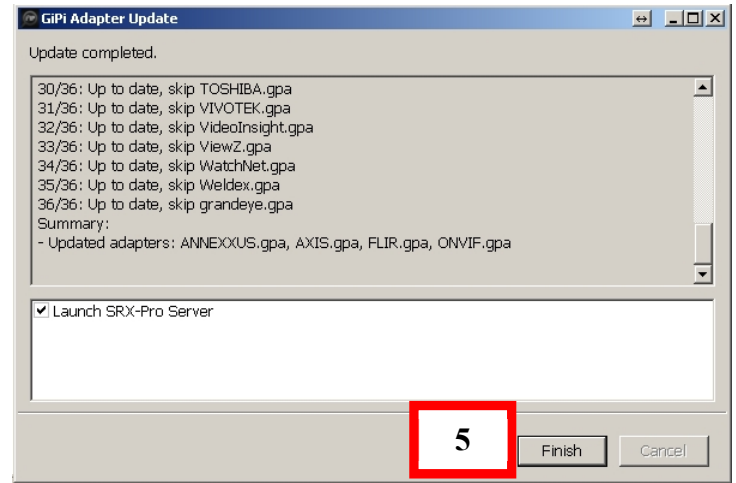
10. Click the **Save** button to save your settings.

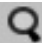



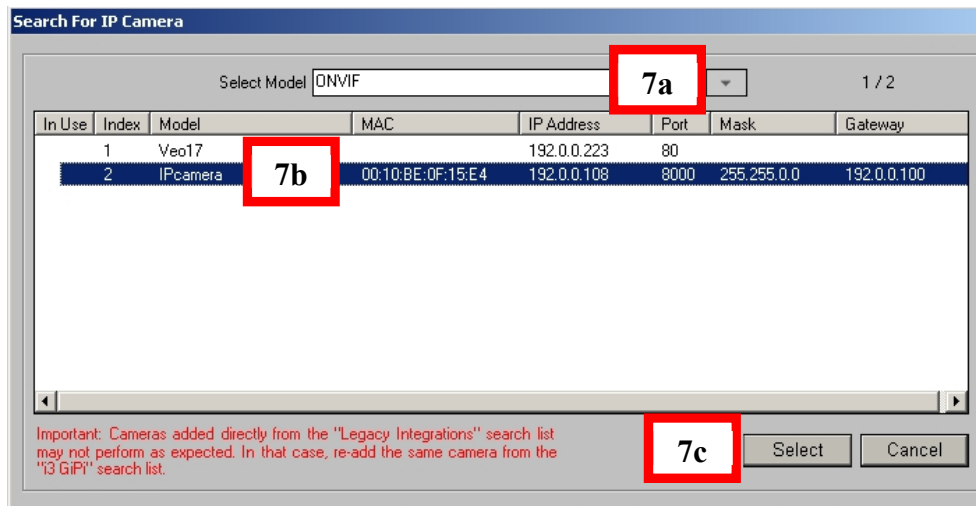
Connecting the ONVIF-compliant IP device to SRX-Pro Server via GiPi.

In order to connect a new ONVIF-compliant IP device to SRX-Pro Server, follow these instructions:

1. Download the latest GiPi file from i3 website: <http://i3international.com/download> under **SRX-Pro Add-ons** section.
2. If running SRX-Pro Server Full version, press **Ctrl + Shift + Alt + F4** and enter SRX-Pro administrative password to access the Desktop.
3. Extract the downloaded *.zip GiPi package and run the extracted *.exe GiPi file.
4. Click **Update** in the GiPi Adapter Update window. If running SRX-Pro Service, GiPi installer will stop SRX-Pro service automatically.
5. Wait until the GiPi adapter installation completes, and click **Finish** to close the GiPi window and to launch the SRX-Pro Server/Service (ensure that "Launch SRX-Pro Server/Service" checkbox is enabled).
6. Once SRX-Pro Server loads, go to **Setup > IP Camera** setup page.
Depending on the ONVIF discovery status of your IP device (see table above, under ONVIF manufacturer), you will need to either Search or Add your IP device manually.
(If the **Discovery** status says "Yes" for your ONVIF IP device model, proceed to Step 7. Otherwise, skip Step 7 and go to Step 8).
7. If the ONVIF **Discovery** status for your ONVIF-compliant device says "Yes",

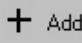
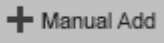


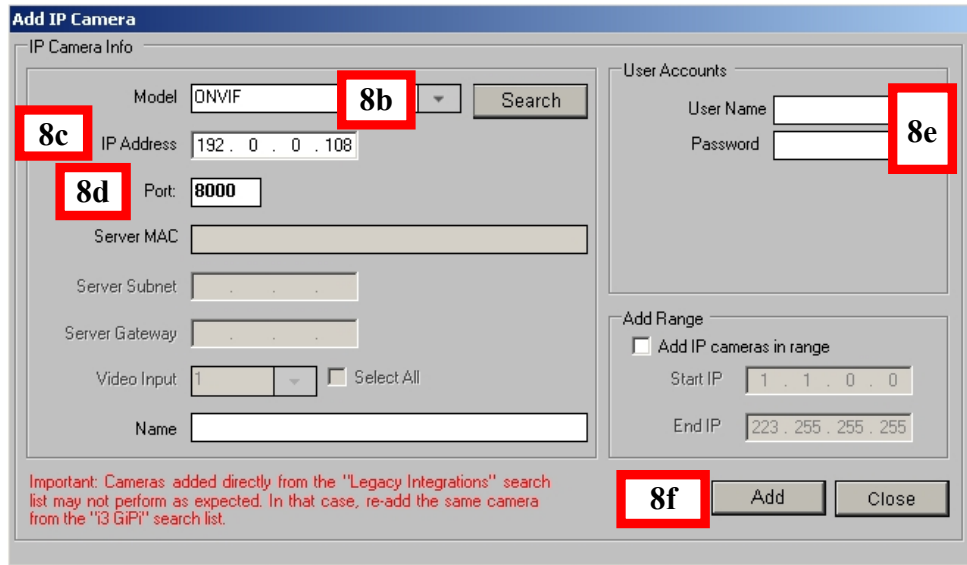
- a. Click the **Search**  Search or **Search & Add**  Search & Add button in the IP Camera tab.
- b. Make sure **ONVIF** is selected in the drop-down menu and let the SRX-Pro Server locate your connected IP device on the network.



- c. Once your IP device has been discovered, select it in the list and click **Select**. Next, go to step 8e.


8. If the **Discovery** status in the chart above says “**No**” for your IP device model,



- a. Click the **Add**  **Add** or **Manual Add**  **Manual Add** button in the IP Camera tab.
- b. Make sure **ONVIF** is selected in the Model drop-down menu.
- c. Enter the **IP Address**
- d. Enter or adjust **Port** number (if required by your device).
- e. Enter the **User Name** and **Password**.
- f. Click the **Add** button



Important: Cameras added directly from the "Legacy Integrations" search list may not perform as expected. In that case, re-add the same camera from the "i3 GiPI" search list.

9. The camera will be added to the All Cameras list in the lower half of the setup page. In the **Ch. In.** (Channel Input) drop-down menu, assign the added IP camera to one or more video channels. In this example, the new camera has been assigned to Video Channel #1.

Camera	IP Address	Input	Resolution	FPS	Ch In.	Name
<ul style="list-style-type: none"> All Cameras <ul style="list-style-type: none">  March Networks ATM Camera 	192.0.0.108 (8000)	1	2048x1536	26	<div style="border: 2px solid red; padding: 2px;"> 1. Channel 1 <input checked="" type="checkbox"/> 1. Channel 1 <input type="checkbox"/> 2. Channel 2 <input type="checkbox"/> 3. Channel 3 <input type="checkbox"/> 4. Channel 4 <input type="checkbox"/> 5. Channel 5 <input type="checkbox"/> 6. Channel 6 <input type="checkbox"/> 7. Channel 7 <input type="checkbox"/> 8. Channel 8 <input type="checkbox"/> 9. Channel 9 <input type="checkbox"/> 10. Channel 10 </div>	

10. Click the **Save** button to save your selection.  or .

Please contact technical support if you have any questions or issues.

Email: support@i3international.com

Tel.: 1.877.877.7241

Live Chat: <http://i3chat.i3international.com/chat>

i3 International Inc. Technical Support and Services

CONTACT 

www.i3international.com
 Toll free: 1.866.840.0004
 Tel: 416.261.2266
 Fax: 416.759.7776

CANADA 

i3 International Inc.
 780 Birchmount Rd,
 Unit 16, Toronto, ON,
 M1K 5H4

USA 

i3 America (Nevada) Inc.
 4450 Witmer Industrial
 Estates, Unit 4, Niagara
 Falls, NY 14305