



Re: PACDM v7.26.2.0 Release Notice

August 16, 2021

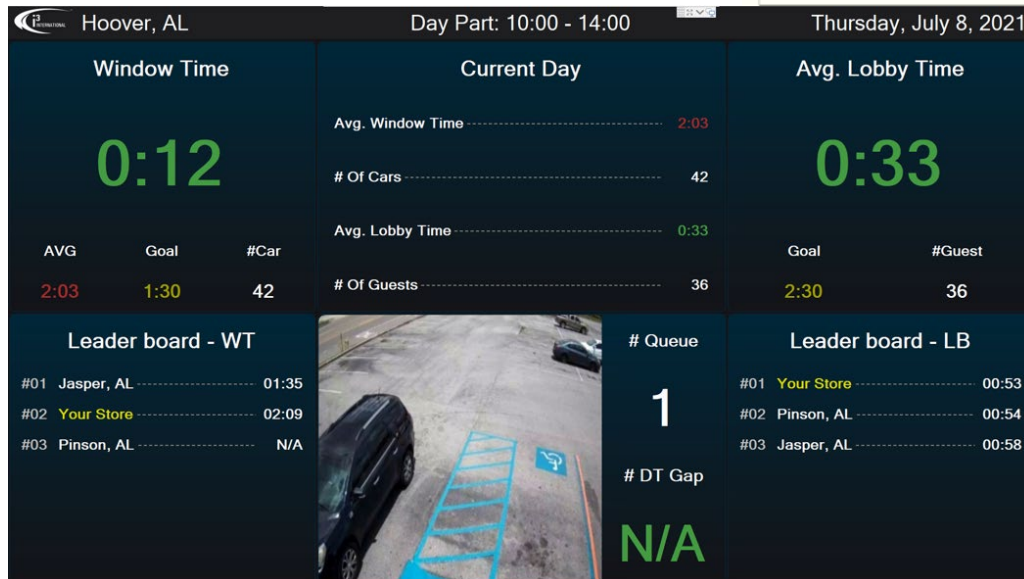
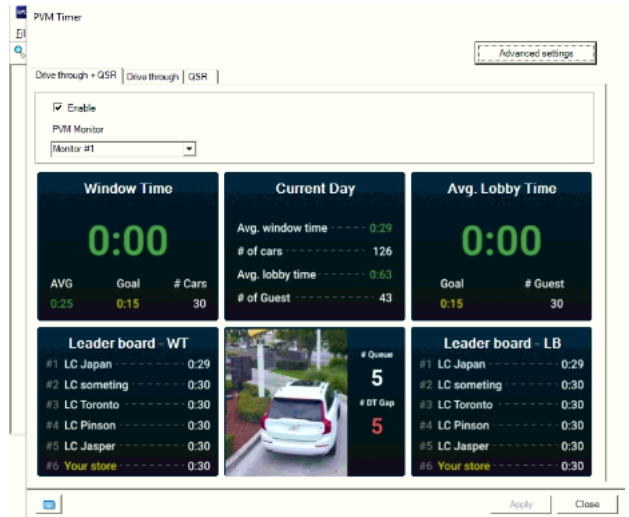
To all of our customers and partners.

This bulletin is the official notice of the PACDM v7.26.2.0 release. Released in conjunction with PAC Converter v3.6.2.0.

The software installation package is now available for download from the i3 website: https://i3international.com/support/download

New Features:

- Customizable Dayparts Public View Monitor (PVM) board. Used in conjunction with i3Ai technology, esp. Traffic & Dwell tracking (#38377).
- Drive-Thru window service time report: running service time for the current Drive-Thru transaction, Average and Goal Drive-Thru service times and the number of cars through the Drive-Thru during the current Daypart.
- Lobby service time report: Average and Goal Lobby service times and the number of customers served in-store during the current Daypart.
- Current Day report: Average Drive-Thru window time vs # of Cars; Average Lobby service time vs # of Guests
- Drive-Thru and Lobby leader board reports
- Drive-Thru queue video monitoring



CONTACT US

www.i3international.com

Toll free: 1.866.840.0004
Tel: 416.261.2266
Fax: 416.759.7776

CANADA


i3 International Inc.

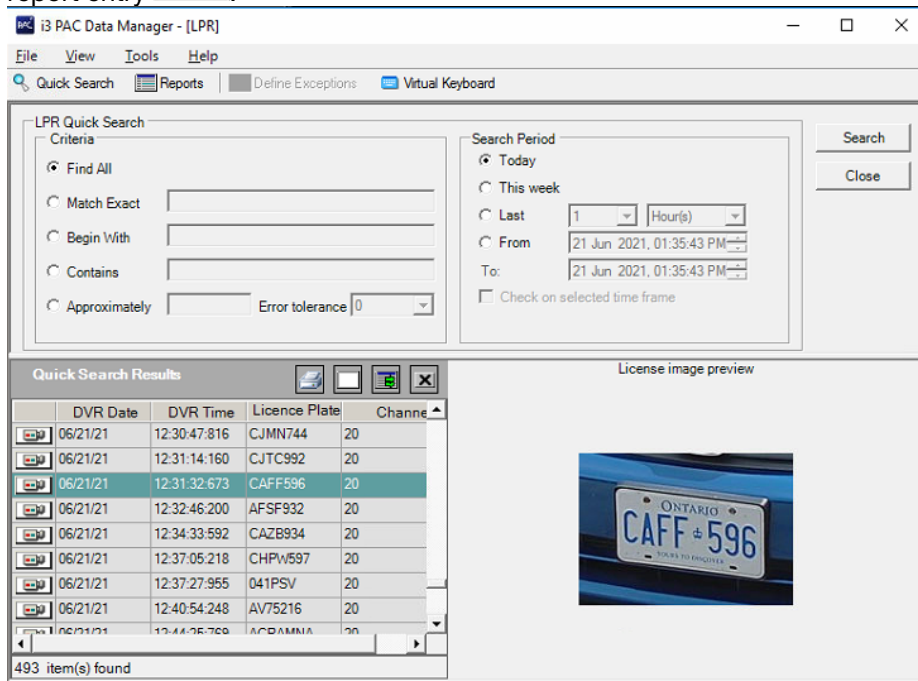
780 Birchmount Rd, Unit 16
Toronto, Ontario
M1K 5H4, Canada

USA

i3 America (Nevada) Inc.

4001 Cobb International Boulevard,
Kennesaw, GA 30152

- LPR report (incl. using encrypted LPR data). Requires the use of i3's Edge LPR solution (pending release) (#41546)
  - Search the license plate database based on an exact or a partial match.
  - Filter by time and date.
  - Launch recorded video in Video Pilot Client (VPC) by double-clicking the video icon next to the LPR report entry .



- EcrsCatapult integration/template (#36397)

**Improvements:**

- Ultramar template updates (#40977)
- Updated template list to include templates from patch files. Included: V1.00\_Retalix; V1.01\_EagleEpicor; V1.01\_Logivision(French); V1.01\_NCRCCounter; V1.02\_Micros3700(i3dvr) (#41772)

**Fixes:**

- Ensure SRX-Pro can receive French characters from the latest template correctly and without interruption (#38163)

**About Version:**

Server version 7.26.2.0 32-bit/64-bit  
 Remote version 7.26.2.0 32-bit (Regular and Enterprise)  
 Build Date: July 27, 2021

Please contact CMS support if you have any questions or issues.

Email: [support@i3international.com](mailto:support@i3international.com)

Tel.: 1.877.877.7241

Live Chat: <http://i3chat.i3international.com/chat>