

October 7, 2020

Re: i3Ai Service v7.1.2.46 Release Notice

To all of our customers and partners;

This bulletin is the official notice of the **i3Ai Service v7.1.2.46**.

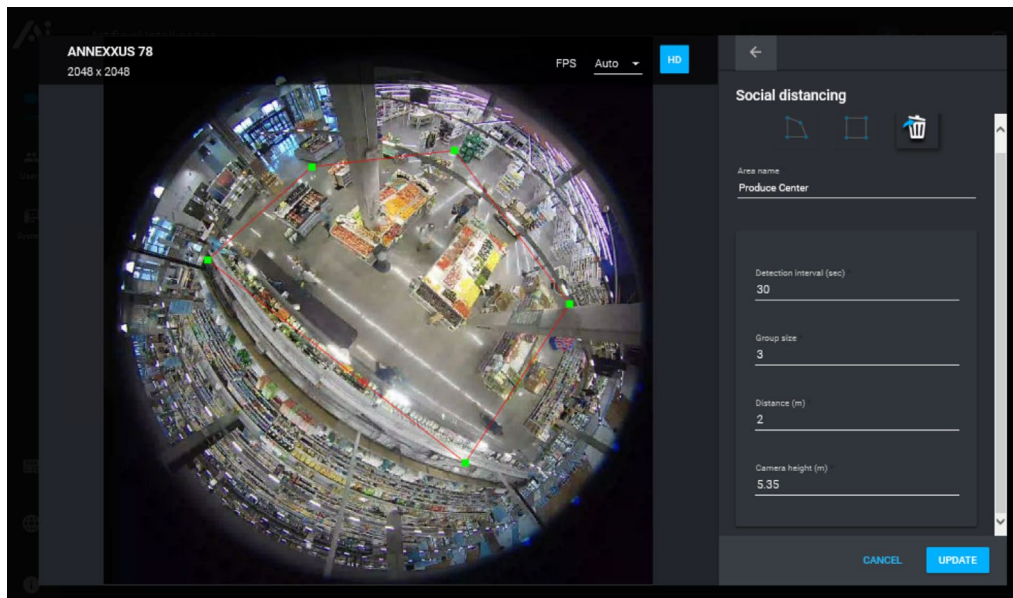
Released in conjunction with **CMS Web v5.9.2.44**, **CMS Mobile iOS/Android v2.3.2.45**, **PACDM v7.23.2.8**, and **PAC Converter v3.3.2.10**.

The new software installation package is now available for download from the i3 website:

<http://i3international.com/support/download>.

New features:

- Support Social Distancing feature (#28698)
Social distancing violations will be detected and sent to the CMS when a set number of people (default: 3) are detected within a set distance of each other (default: 6"/2m).
Set the camera mounting height (AFF) for best accuracy.



- Integrate CNN model p23c-082820 for increased accuracy (#30738)

Improvements:

- Hardware check during the initial installation process to detect supported GPU. (#29578)
Warning message, as shown below, will be displayed when no GPU graphics card is detected. Ensure the correct driver is installed on your system.

CONTACT US

www.i3international.com

Toll free: 1.866.840.0004

Tel: 416.261.2266

Fax: 416.759.7776

CANADA

i3 International Inc.

780 Birchmount Rd, Unit 16

Toronto, Ontario

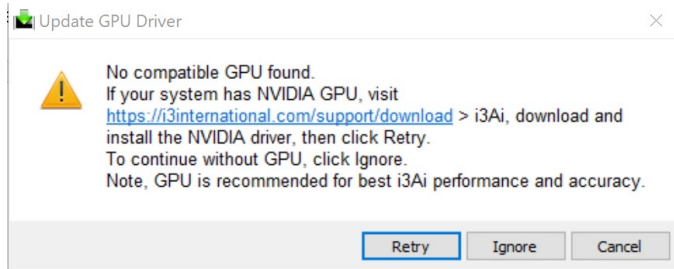
M1K 5H4, Canada

USA

i3 America (Nevada) Inc.

4001 Cobb International Boulevard,

Kennesaw, GA 30152



- Support multiple GPU graphics cards at the same time to boost system performance and accuracy, the more and more powerful GPU are installed on the system, the more i3Ai channels can the system support with high accuracy. (#29841)
- Frames are delivered evenly into Ai engine (performance improvement) (#28977)
- I3Ai login page can be bypassed (#30420)
- Performance improvement for multiple channels running the new Social Distancing feature. (#29279)
- Remove advanced settings from Door Count setup, for simplified and more user-friendly experience. (#29031)

Fixed issues:

- Fixed: Alarm area is missing after the upgrade from i3Ai v7.0 to i3Ai v.7.1. (#30370)
- Fixed: Sub- to mainstream switching unavailable after mainstream frame rate change. (#29256)

i3Ai v7.1 Compatibility Table.

Note: For i3 application compatibility, refer to i3’s Software Compatibility Chart technical bulletin on [Media Library](#) web page. Search **Technical Bulletins** > **Software** subfolder for the latest revision.

| i3 Application / Device | Compatibility |
|-------------------------|--|
| SRX-Pro | v.7.1.2.X |
| UIO8 | UIO8 Firmware v2.3.0 to v2.3.6 |
| CMS Web | CMS v5.8 or higher |
| PACDM | PACDM v7.22.2.0 PAC Converter v3.2.1.23 |
| VPC | VPC v7.1.2.49 or higher |

Please contact technical support if you have any questions or issues.

Email: support@i3international.com

Tel.: 1.877.877.7241

Live Chat: <http://i3chat.i3international.com/chat>