



Re: Video Pilot Client v7.0.2.65 Release Notice

November 1, 2019

To all of our customers and partners;

This bulletin is the official notice of the Video Pilot Client v7.0.2.65 release. Released in conjunction with i3Ai v7.0.2.32 and SRX-Pro v7.0.2.65.

The new software installation package is now available for download from the i3 website: http://i3international.com/support/download.

Important Notes / Main Changes:

- 1. SRX-Pro Remote application has been retired. Video Pilot client is the primary and only way to conduct live video monitoring, search and backup video recorded by SRX-Pro v7.
2. VPC installation is now part of the SRX-Pro v7 package.
3. External Monitor (dDisplay) function is now configured in Video Pilot Client (v7 and higher)
4. i3Ai compatibility has been introduced to conduct Video Analytics searches in VPC.
5. VPC v7 supports H.265 compression.

Release History:

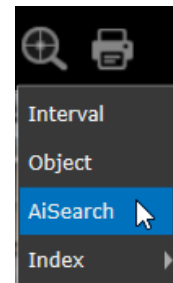
v7.0.1.34 (Internal Release, Beta, EVALUATION PURPOSES ONLY)

New Features:

- H.265 compression support (when connecting to SRX-Pro v7 or higher only). H.265 must be enabled on compatible devices (IP cameras).
• Add 'Start up with Windows' option (enabled in Options by default).
o On auto-relaunch with Windows, VPC will automatically re-establish all connections from a previous session.
o On auto-relaunch with Windows, VPC will remember the custom channel arrangement, including on Primary and External Monitor(s) (dDisplay).
o Note, that if the user Disconnects from remote NVRs manually before closing VPC or rebooting PC/NVR, previous session and custom channel arrangement will not be remembered on the next VPC launch.
• Support i3Ai object search (when connecting to SRX-Pro v7 with i3Ai licenses and enabled i3Ai channels). Similar to the legacy iSearch function, AiSearch function allows to filter video recording by object detection in a specific area of the screen, but with higher accuracy and more precision.

To launch AiSearch,

- o Bring a camera into Full Screen mode (double-click)
o Click on the Advanced Search magnifying glass icon
o Select AiSearch option from the list.



CONTACT US

www.i3international.com

Toll free: 1.866.840.0004
Tel: 416.261.2266
Fax: 416.759.7776

CANADA

i3 International Inc.

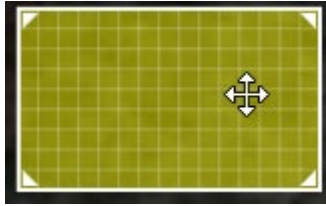
780 Birchmount Rd, Unit 16
Toronto, Ontario
M1K 5H4, Canada

USA

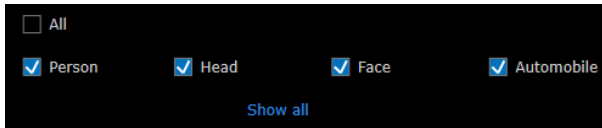
i3 America (Nevada) Inc.

4001 Cobb International Boulevard,
Kennesaw, GA 30152

- Adjust selection area on the screen using the mouse cursor. Increase/decrease the area size or drag it on the screen to cover area of interest.



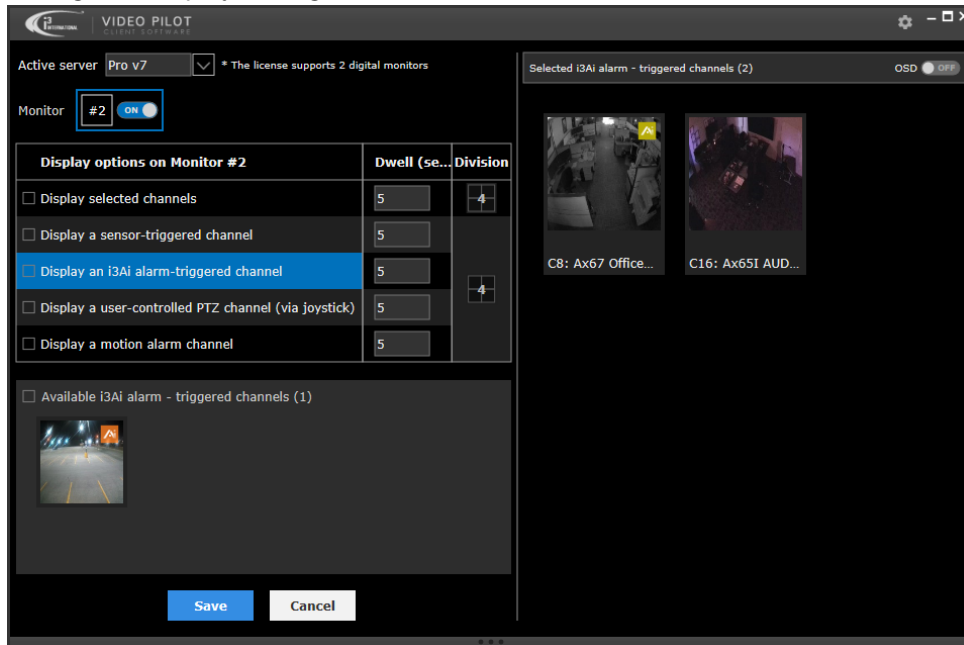
- In Object Detection panel, select Person, Head, Face, and/or Automobile to filter the video based on selected object types. Or click **Show all** and select another supported object.



- Video recording will be filtered based on the user selection (area + object type). Video segments with matching detection will be shown in Yellow on the recording timeline. Playback video to show only the video matching AiSearch filter selections.



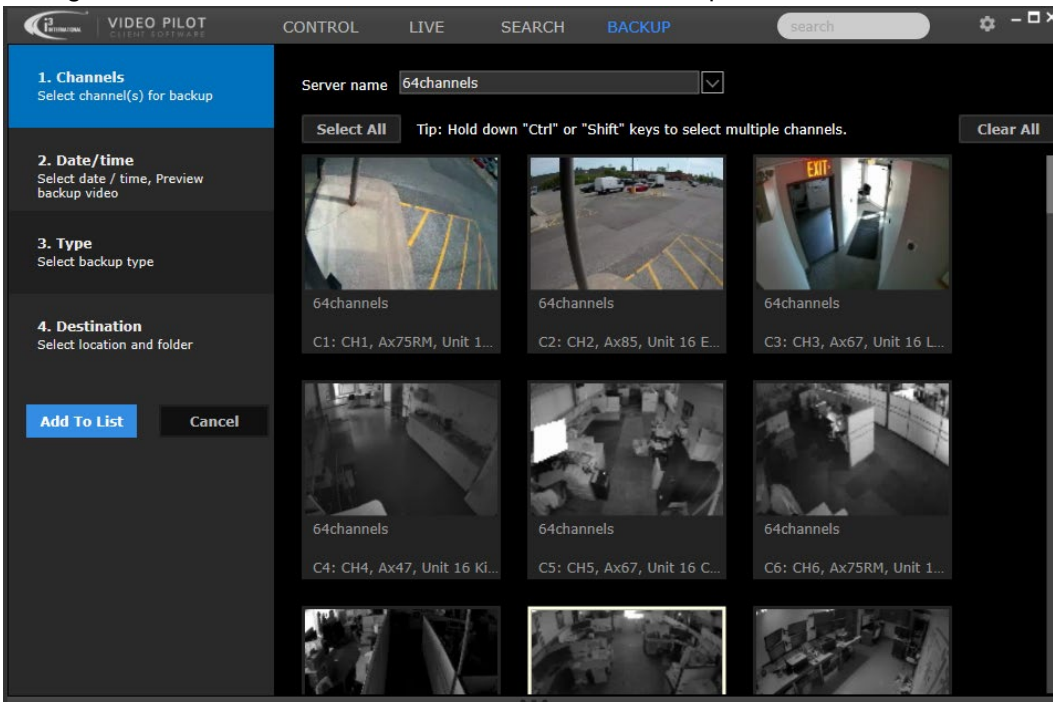
- External Monitors are configured in VPC. Depending on the number of dDisplay licenses enabled on the remote SRX-Pro Server, VPC can configure the corresponding number of external monitors. The monitors must be physically connected to the system where VPC is running. Configure dDisplay settings as before.



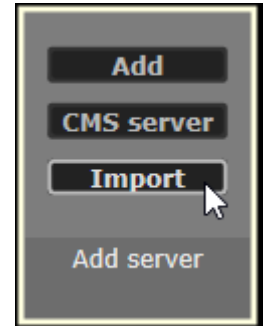
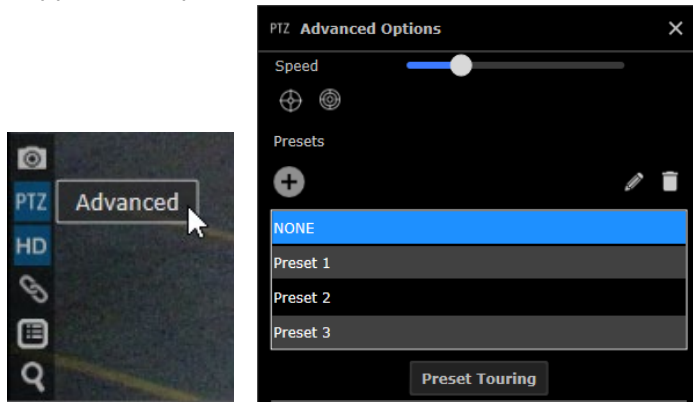
- Support http/https launch commands, similar to video.exe command. The following http/https commands are supported:
- -s: (new definition) server\_ip:server\_port/server\_id
- -u: username (encrypted )
- -p: password (encrypted )
- -m: mode ('live' or 'playback')
- -g: preset number
- -o: end date for playback
- -a: pac id
- Support automatic backup of the newest configuration for future recovery if the current configuration becomes corrupted.
- Support KSearch integration using video.exe command to launch VPC when connecting and searching data from SRX-Pro Server. NSIS patch is to be provided to the user by i3 Tech Support, on demand.
- Integrate with PACDM.
  - If VPC connects to local Server (localhost): launch PAC Server and don't download database.
  - If VPC connect to server remotely: launch PAC Remote and allow database download.



- Change the BACKUP interface to match SRX-Pro v6 backup wizard.



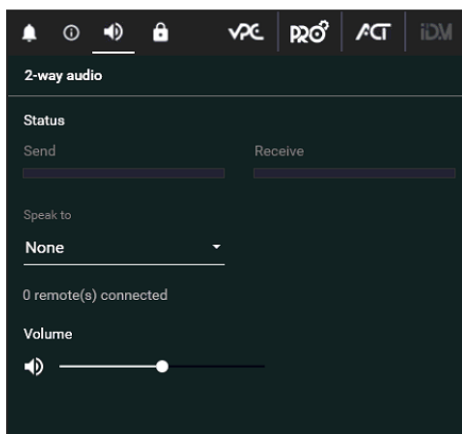
- Support PTZ speed, Iris and Focus functions, Presets and Preset Touring for compatible cameras.



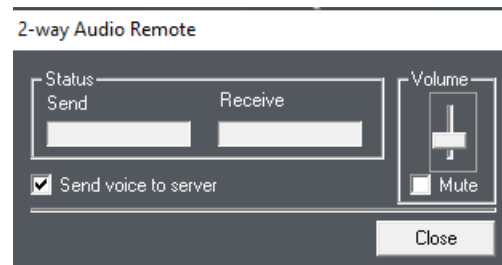
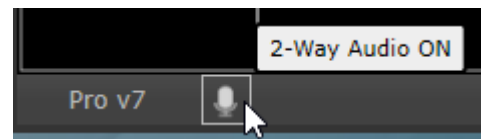
- Allow importing a list of SRX-Pro Servers in VPC (in \*.xml format). In CONTROL panel, mouse over Add server tile, click on Import. Locate \*.xml Server list and click **Open**. Server\_list.xml file can be copied from a master VPC system, from C:\Users\USERNAME \Documents\VPClient\config folder.

- Support 2-way audio session between SRX-Pro Server and a remote Client (VPC) system. PC microphone & speaker are required on both systems. To initiate, launch VPC on the SRX-Pro v7 system and connect to localhost server. On a remote system, launch VPC and connect to the same Server. Important: Port **11109** must be opened/forwarded on the SRX-Pro v7 system. On SRX-Pro v7 system, launch SRX-Pro Monitor utility and click on 2-way audio tab. Select connected remote client in Speak to drop-down menu and speak into the microphone. On the VPC system, turn 2-Way Audio ON (click on the microphone in the left bottom corner of the VPC taskbar to launch 2-way Audio Remote window and speak into the microphone.

**SRX-Pro v7**



**VPC v7**



CONTACT US

[www.i3international.com](http://www.i3international.com)

Toll free: 1.866.840.0004  
Tel: 416.261.2266  
Fax: 416.759.7776

CANADA

**i3 International Inc.**

780 Birchmount Rd, Unit 16  
Toronto, Ontario  
M1K 5H4, Canada

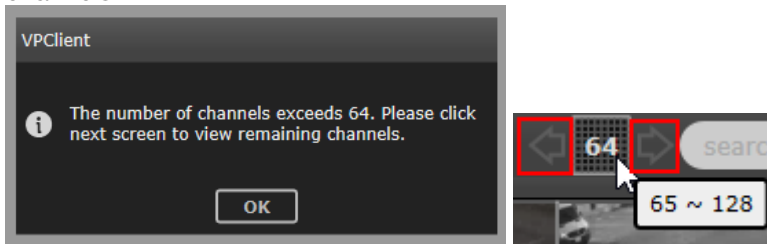
USA

**i3 America (Nevada) Inc.**

4001 Cobb International Boulevard,  
Kennesaw, GA 30152

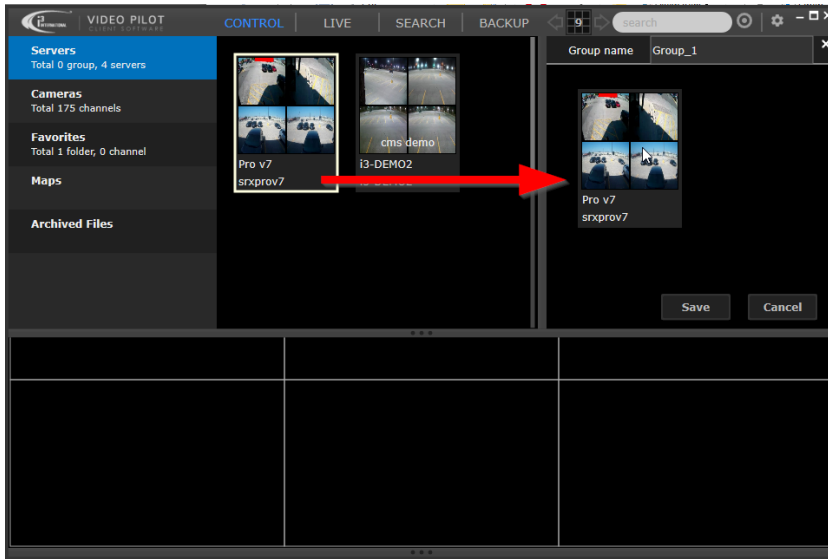
**Improvements:**

- Synchronize setup changes from SRX-Pro v7
- Support Display Watermark image in Search mode
- Allow to change snapshot backup destination (Snapshot backup from Live/Search)
- Support to show text overlay on Fisheye camera inputs.
- Allow connecting to 1024 channels (16 servers x 64 channels). To see the next set of 64 channels, make sure 64-division is selected, then click on the Left/Right arrows to view the next/previous set of channels.



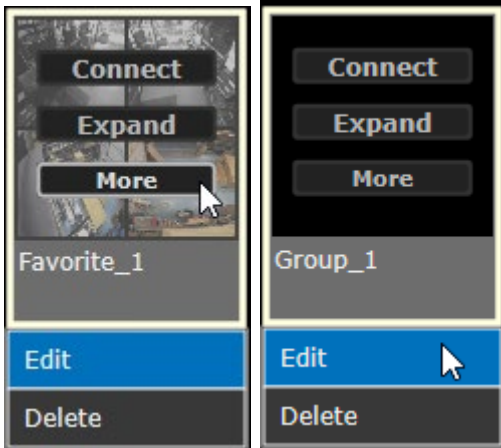
- Change how Server Groups are created. To create a new Server or Favorites group, mouse over Add group or Add Favorite tile and select **Add group** or **Add**. Drag-and-drop Servers or Cameras into the newly created folder. Click **Save** when done.





Once created, mouse over the new Group or Favorites folder tile and Connect to all channels linked to the Server group or Favorites group.

To Edit or Delete the group, click on **More**.



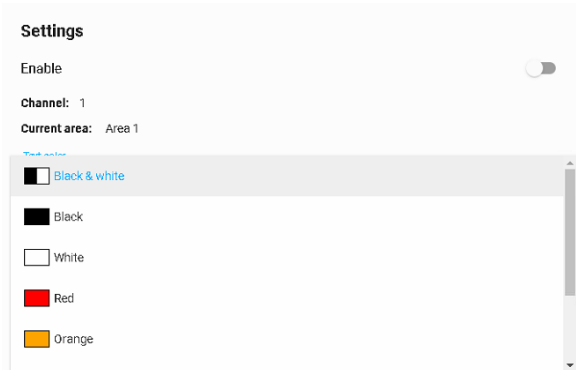
- Launch suitable Remote version for connected Server from VPC.  
To edit connected Server settings, mouse over the connected Server tile, click on More > Server Setup.
  - If Server is running SRX-Pro v3, 5, or 6, launch corresponding SRX-Pro Remote application. Correct SRX-Pro Remote application must be installed on the same system.
  - If Server is running SRX-Pro v7, launch SRX-Pro Setup in a web browser and auto-login with Site credentials saved in VPC.



**v7.0.1.80 (Internal Release, Beta, EVALUATION PURPOSES ONLY)**

**New Features:**

- Support single division on External Monitor (dDisplay)
- Support Full Screen option on External Monitor.
- Support display multiple colors for Text Overlay. Text overlay color settings is synchronized to SRX-Pro setting and displayed in the same color in VPC. Doesn't apply to Side Panel text overlay display.



**Improvements:**

- Do not display channels without video source when connecting to SRX-Pro Server.
- If the channel saved in Favorite Group or Map becomes unavailable, VPC will no longer display it in Favorites and Linked channels.

**v7.0.2.0 (Interim Release)**

**New Features:**

- Bug Trap integrated into VPC to collect information after an unexpected application crash.

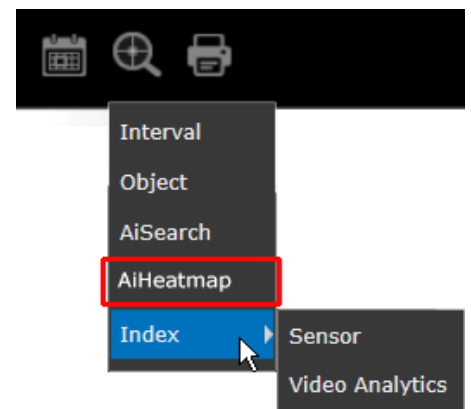
**Improvements:**

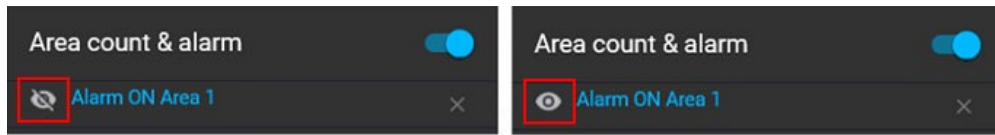
- CPU usage reduction when: VPC minimized, refresh screen, OSD On/Off
- Main/sub stream display improvement on Live & Search
- New GUI for LPR results: show last 10 detected license plates.

**v7.0.2.29 (Interim Release)**

**New Features:**

- i3Ai Heatmap Search support. AiSearch and AiHeatmap options appear in VPC only when corresponding i3Ai features are enabled in the i3Ai for selected channel and the same channel is linked to i3Ai Server in SRX-Pro Setup v.7.0.
- New i3Ai Search GUI
- Synchronize i3Ai tracker visibility (show/hide) with VPC. If the tracker and alarm is "hidden" on i3Ai Server, the same setting preferences will apply to VPC. To hide/show the Ai tracker, click on the eye icon (in i3Ai Server setup).  
Left: Tracker is hidden; Right: Tracker is visible.





- Apply SRX-Pro user Video Privacy permissions to VPC Live/Search modes. If SRX-Pro user has Video Privacy privilege, allow hiding/showing Video Privacy masking area on Live or Search video.

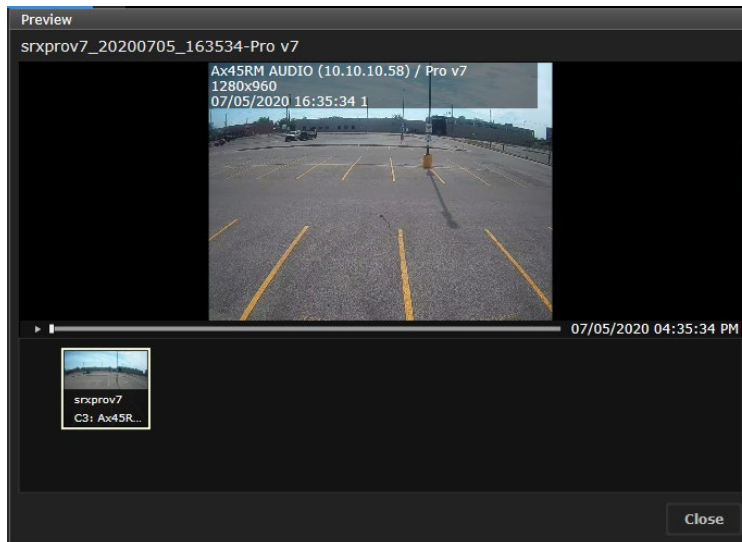
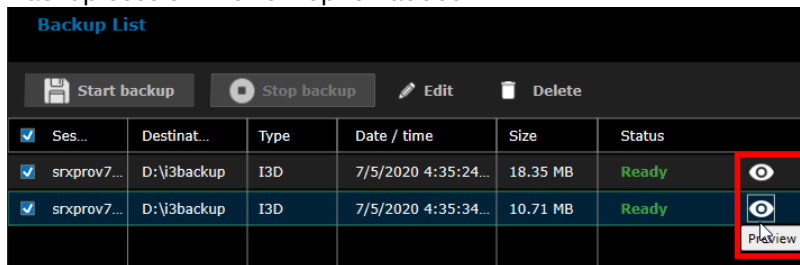
**Note:** Video Privacy masking cannot be removed from Backup video, regardless of user privilege.

Left Image: OSD menu options for the user with Video Privacy privilege.

Right Image: OSD menu options for the user without Video Privacy privilege.

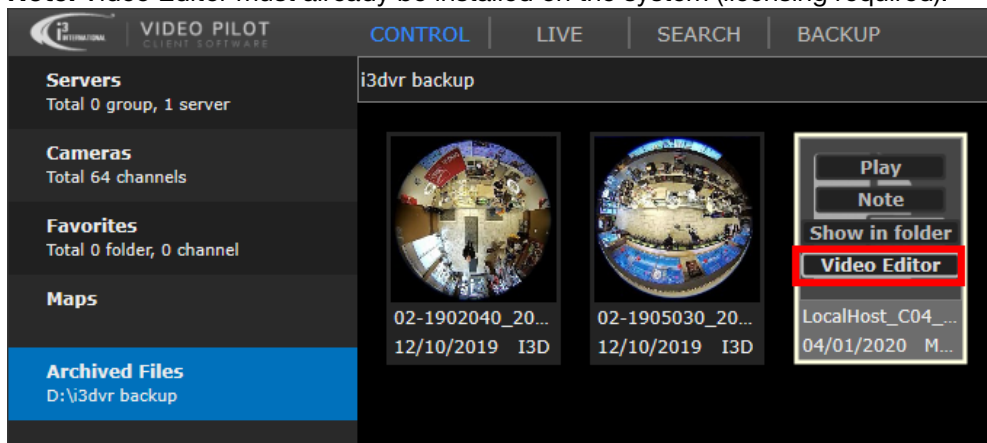


- Backup session Preview option added.



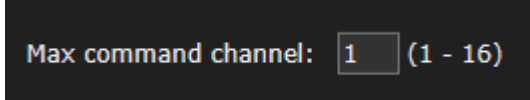


- VPC 64-bit only: Open an archived \*.mp4 file in Video Editor.  
**Note:** Video Editor must already be installed on the system (licensing required).



**Improvements:**

- Updated License Agreement applied.
- Force the user to log back into VPC after making changes to VPC user password.
- Improve channels list interaction in backup mode.
- LPR screen changes:
  - When a LPR channel switch to full screen mode: show LPR panel
- Improve offline search:
  - Only selected channel will play instead of all channels as in the earlier versions.
  - Improve performance during offline search in Full screen mode.
- Show “Backup” button even when VPC is not connected to any Servers. Allow viewing Backup interface with all functions grayed out.
- Improve backup mode:
  - When creating new backup session, do not auto-select first 16 channels by default.
  - Change backup steps order to: 1. Channels > 2. Date/ time > 3. Type > 4. Destination
  - Clear finished backup session after VPC restart if backup uses Server Storage.
- Remove codecf256.dll, use only codecf.dll to decode both of H264 + H265 codec
- VPC commands improvement (video.exe integration)
  - VPC can display up to 16 channels through video.exe command integration. To define the maximum number of channels that can be displayed through video command, modify “Max command channel” setting in Options.



- Show channel in Full Screen if it is the first view in VPC
- Support a mix of video command and manually connected server: keep all channels that have video.
- Oldest channels from video command will be removed if maximum number is exceeded
- Note: VPC command is unable to search multiple servers with different time zones.

- Apply backup session names following new convention:
  - AVI/MP4: [ServerID][Channel number][Channel name][Start date/time]
  - JPG: [ServerID][Channel number][Channel name][Start date/time][Frame number]
  - I3D: [ServerID][Start date/time]
  - To customize the session name, double-click on the name and re-enter
  - Customer name overrides naming convention above and no additional information will be added to the custom session name.
  - To return to the default naming convention, double-click on the custom name and clear all.
  - In case of duplicate file names in the backup folder: add \_n to differentiate the file names.
- Improve “Auto download on VPC client start up” for added CMS Server:
  - Whenever VPC start, VPC will auto connect to CMS Server & compare the Server list:
    - If the server no longer exists on the CMS Server, remove it from Server list.
    - Update Servers in CMS Groups list to the newest information available on CMS Server.
    - Add new Servers from CMS Server to the VPC list.
- Update VPC minimum dialog size:
  - Change minimum size for VPC from 1024x768 to 960x640
  - Reduce minimum monitor resolution to 1024x720
- External Monitor: update GUI to reduce setup steps

#### v7.0.2.65 (Official/Production Release)

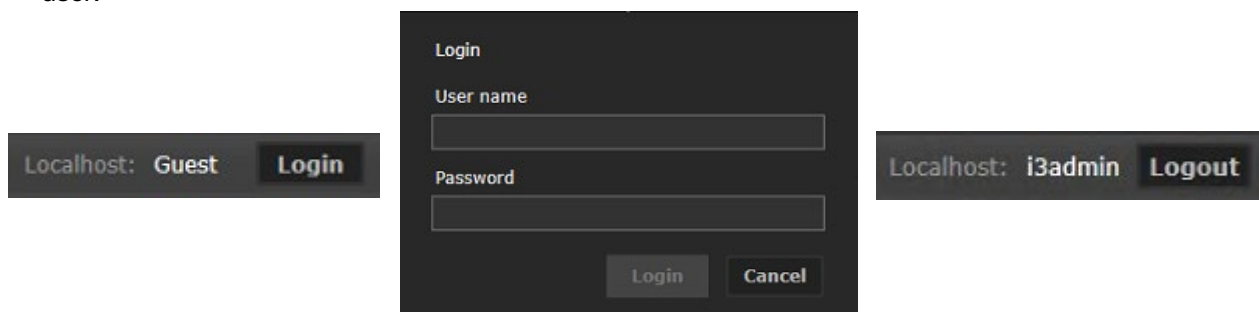
#### New Features:

- Logout mode added for localhost Server. For installations where VPC is running on the same Server as SRX-Pro v7. This feature applies to localhost connection only, not to remote connection(s).

**Note:** To give Guest account Live viewing permissions, edit **Idle** user group permissions in SRX-Pro > Server > User Management setup.

Note: Guest user has access to **localhost** pre-selected Live channels only and no access to Search, Backup, Options, External Monitors, Maps or any other functions.

To enter localhost credentials, click **Login**, enter User name and Password and click **Login** again. To secure your localhost account, click **Logout** when done, especially if sharing VPC station with another user.

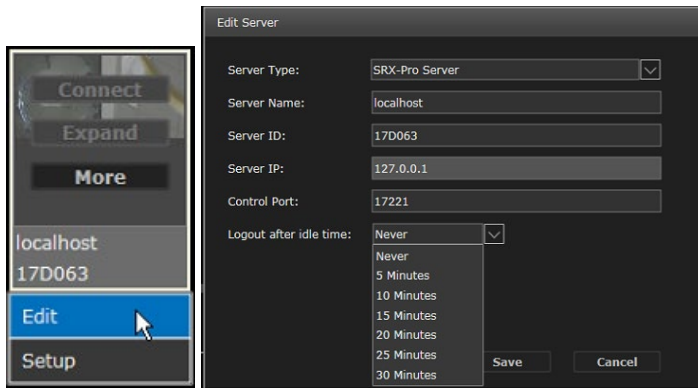


**Tip:** (Optional) To log out a current user from *localhost* Server after a period of inactivity, Disconnect from localhost Server in CONTROL, then click **More > Edit**.

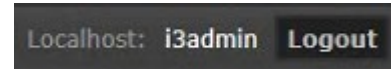
In **Logout after idle time** drop-down, select preferred idle time period (5-30 minutes) and click **Save**.

By default, the current user will **Never** be logged out. To Log out manually, click Logout next to the username in the top right-hand corner.

Log out of the localhost automatically after Idle Time



Log out of the localhost manually



- Warning shown when license expires in 30 days or less.

**Improvements:**

- In External Monitor (dDisplay), main stream now supported for Single (1) and Quad (4) divisions. Sub-stream is shown for all other division types.

**Fixed Issues:**

- VPC uninstaller was being blocked by Trend Micro on some PCs.

**Limitations:**

- Localhost connection is automatically added to VPC>CONTROL>Servers tab only when installed with SRX-Pro Service (not Regular) version.
- When using KSearch, all servers must have unique Server ID. KSearch cannot connect to the correct Server IP when multiple servers have the same Server ID.
- When changing i3Ai channel settings, VPC will reset all count values to 9 and will update them after receiving new results from SRX-Pro after 3 seconds.
- English-language support only



**VPC v7 Compatibility Table.**

**Note:** For more i3 application compatibility, refer to i3’s Software Compatibility Chart technical bulletin on [Media Library](#) web page. Search **Technical Bulletins** > **Software** subfolder for the latest revision.

i3 Application / Device	Compatibility
VPC Configuration	VPC v3.0 and higher
SRX-Pro	SRX-Pro v.3.0 and higher
PACDM	PACDM v7.22.2.0 PAC Converter v3.1.2.0
i3Ai	i3Ai v7.0.2.32

**About Version:**

Version 7.0.2.65

Build Date: October 31, 2020

With any pricing questions, kindly contact our Customer Care department at 1.866.840.0004.

i3 International Technical Support and Services

Email: [support@i3international.com](mailto:support@i3international.com)

Tel.: 1.877.877.7241

Live Chat: <http://i3chat.i3international.com/chat>

CONTACT US

[www.i3international.com](http://www.i3international.com)

Toll free: 1.866.840.0004

Tel: 416.261.2266

Fax: 416.759.7776

CANADA

**i3 International Inc.**

780 Birchmount Rd, Unit 16

Toronto, Ontario

M1K 5H4, Canada

USA

**i3 America (Nevada) Inc.**

4001 Cobb International Boulevard,

Kennesaw, GA 30152