

August 15, 2017

**Re: VPC v6.0 Release Notice**

To all of our customers and partners;

This bulletin is the official notice of the upcoming Video Pilot Client v.6.0 release.

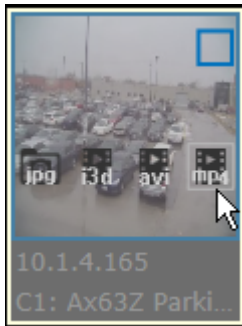
Once released, the software installation package will be available for download from the i3 website: <http://i3international.com/download>.

**Backwards Compatibility**

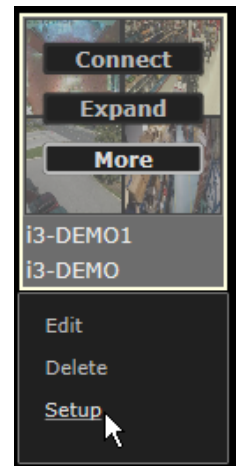
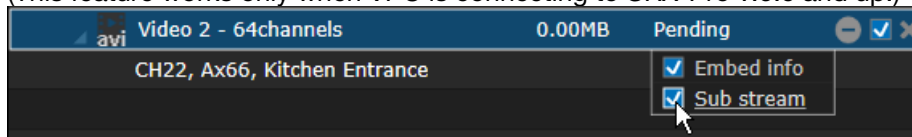
- VPC v.6.0 is able to connect to SRX-Pro v.3.0 and above

**Backup Improvements**

- Video backup from SRX-Pro v.6.0 can now be saved in \*.mp4 format. Resulting video file will also include recorded audio for supported Annexus cameras (Ax68/78, Ax65/75).



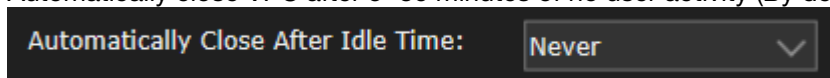
- Users are now able to create separate \*.avi video backups of the camera's sub stream. (This feature works only when VPC is connecting to SRX-Pro v.6.0 and up.)

**SRX-Pro Remote Call-up**

- VPC does not support remote SRX-Pro setup changes, however if the PC has both VPC v.6.0 and compatible SRX-Pro Remote installed, the user is able to call up SRX-Pro Remote from VPC CONTROL tab to configure the settings of the corresponding server. (The site has to be added to SRX-Pro Remote first). VPC calls the installed version of the SRX-Pro Remote, which may or may not be compatible with the connecting Server. SRX-Pro Remote v.5.0 is compatible with SRX-Pro Server v.3.0 to v.5.0 and SRX-Pro Remote v.6.0 is compatible with SRX-Pro Server v.6.0 only.

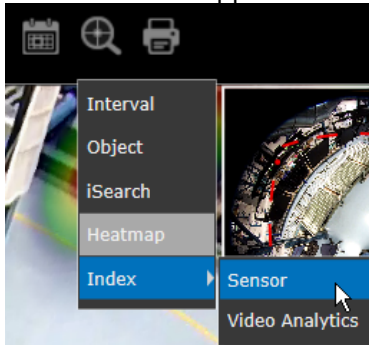
**VPC Idle Time**

- Automatically close VPC after 5~30 minutes of no user activity (By default set to "Never")



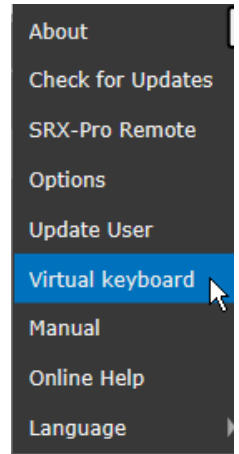
### Intelligent Search

- VPC v.6.0 now supports Index searching based on Sensor and Video Analytics activity



### Virtual Keyboard

- Virtual keyboard has been added for users that do not have a USB keyboard plugged into the PC.



### CPU Saver Mode

- Allow setting maximum CPU usage on the client PC. When set value is exceeded, VPC will show i-frames instead of full FPS video to conserve CPU resources.  
(This feature works only when VPC is connecting to SRX-Pro v.6.0 and up.)

Show I-frames only if CPU usage is more than  % (10 - 100)

### VPC on U1 NVR, with SRX-Pro Service

- When installed on a U1 NVR with SRX-Pro Service v.6.0, localhost server is automatically added to the VPC list of Servers for easy Live viewing. (Note, search mode on U1 is limited to 4 channels at-a-time).

### Secure Auto Update URL

- VPC Auto Update server re-located to a more secure “https” location.

### Store User Display Preferences

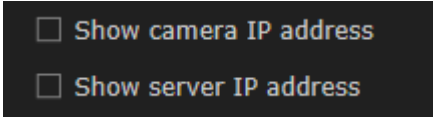
- Save the last fisheye camera user view. Once the user adjusts the fisheye image based on their preferences, the user view is saved and displayed on the next connection.
- Save the camera’s digital zoom user view. Once the user zooms into the video image, the resulting camera view is saved and displayed on the next connection (does not affect recorded video).
- Save VPC View Type for Servers/Cameras/Favorites. Once the user selects one of the three available

View Types (Thumbnail List, List, Details   ), this preference is saved and displayed on the next connection.

- In Favorites view, maintain user-preferred display view, even if connection to one of the servers is lost unexpectedly (vs user manual Disconnect). Do not re-order channels from other servers to fill in the blank screen divisions during server connection loss.

**User Interface Improvements:**

- Show or hide camera/Server IP address in the live video screen



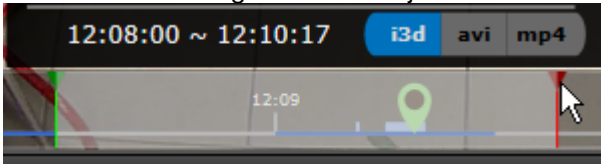
- Added servers are auto-arranged in alphabetical order in the CONTROL tab.
- Re-order Server information fields in the Add Server window. Do not request password re-entry when editing server information.
- In Backup mode, the channels are listed in the same order as in Live/Search modes. Channels that do not have any video in Live/Search mode at the time of the connection will be displayed at the end of the Backup channel list.



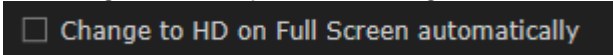
- Use the new VPC logo
- Move the “Add” item to the first position in Servers, Favorites, Maps and Archived Files modes.
- In Live/Search mode, support the removal of multiple selected channels from the screen division. Select multiple *non-sequential* channels by holding down **Ctrl** button on the keyboard and clicking on the video thumbnail to select. Select multiple *sequential* channels by first clicking on the first channel in the group to select it, then hold down **Shift** button on the keyboard and click on the last channel in the group.

**Other Improvements:**

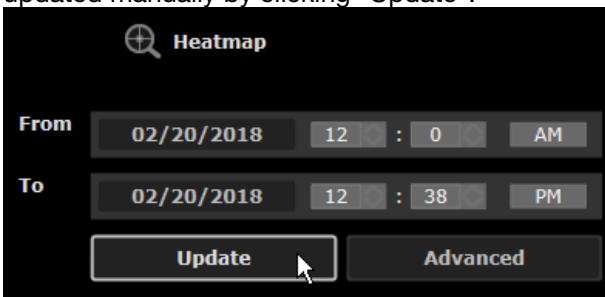
- One-click backup destination update. In the Backup mode, select the backup list (Snapshot Lists, I3D Lists, or AVI/MP4 Lists), select the new Backup destination and click Update. New backup destination will be assigned to all backup sessions of the selected type (e.g. all \*.mp4 backup sessions).
- Mark Start/End drag indicators adjustable to the exact second



- In Settings, add an option to “Change to HD on Full Screen automatically”



- Instant Search improved to allow quick navigation through recorded video in Quick and Individual Search modes. Use the mouse cursor to drag the timeline.
- Auto-update Heatmap on-screen graph after search time/date change. Heatmap graph can also be updated manually by clicking “Update”.





INTELLIGENT VIDEO DRIVING PROFIT

- CMS Server adding improvements: sort added CMS servers alphabetically, highlight newly added CMS servers in the list.
- LAN connection will be attempted first, if unsuccessful, WAN connection will be established.

With any pricing questions, kindly contact our Customer Care team at 1.866.840.0004.

With any technical questions or issues, please contact Technical Support team.

Email: [support@i3international.com](mailto:support@i3international.com)

Tel.: 1.877.877.7241

Live Chat: <http://i3chat.i3international.com/chat>

i3 International Inc.  
Technical Support and Services