

## Re: FingerTec Integration with i3 Portal Card Access

To all of our customers and partners;

Provided below are the instructions on the integration between FingerTec and i<sup>3</sup> Portal Card Access System. FingerTec website: [www.fingertecusa.com](http://www.fingertecusa.com) / Model: Q2I/TA200 Plus

It is possible to use Q2I/TA200 Plus as a part of the Portal system in place of an i<sup>3</sup> reader (P-ALADDIN24). While P-ALADDIN24 reader works in conjunction with Access Cards and Key Fobs, Q2I/TA200 Plus device will accept finger scan only in such application. The finger scan on Q2I/TA200 Plus device can then be associated with the Portal Card Access card holder. As a result, Q2I/TA200 Plus and P-ALADDIN24 devices can be used together as a part of a single Portal Card Access system where P-ALADDIN24 reader will grant access based on a presented valid card access card and Q2I/TA200 Plus device will grant access to the same user based on a finger scan. Both events will be tied to the same user in the Portal Card Access database.

To accomplish the integration, follow the steps below.

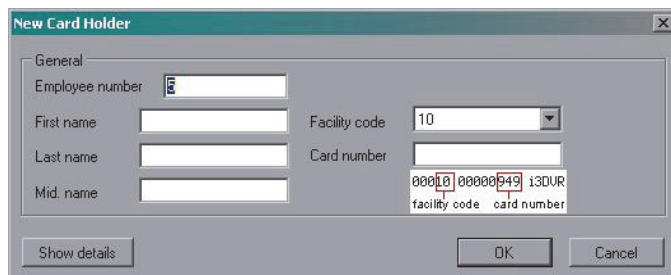
### Step 1: Program Card Access cards

Program all i3 Portal Card Access cards into the Portal database. Add all necessary Card Holders through Portal Card Access software.

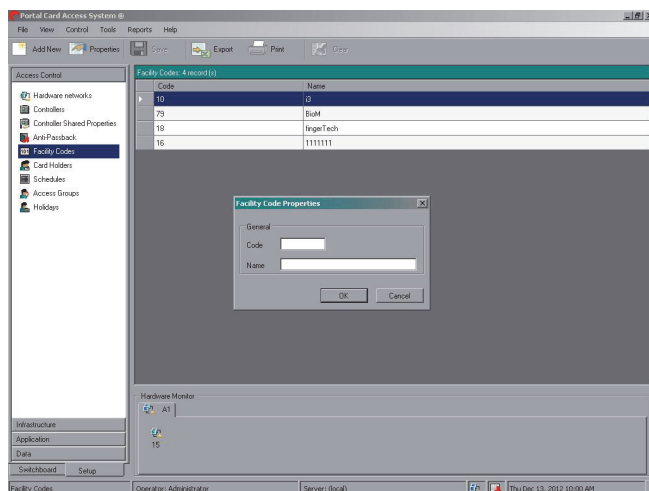
1. Select **Card Holders** item in the list and click **Add New** button on the control panel
2. Fill out the New Card Holder form for each new cardholder: First Name, Last Name, Mid. Name (if applicable), Card number, Facility Code.

**Note:** Facility code for all i3 access cards is set to '10'.

3. If the required Facility code is unavailable, select Add New in the **Facility code** drop-down menu.

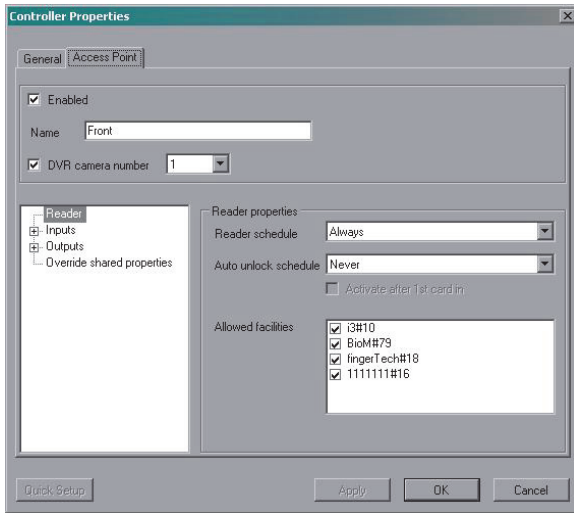


### Step 2: Add in new Facility Code into Portal Software



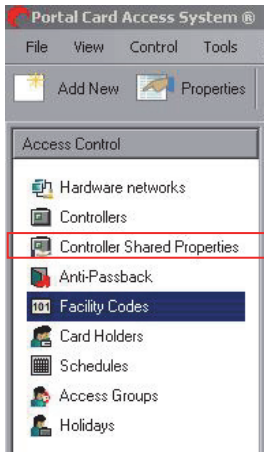
1. In the *Facility Code Properties* window, enter the new **Facility Code**
2. Enter the new Facility code **Name**.
3. Click **OK**.

### Step 3: Activating the Facility Code



1. Go to Controllers
2. Go to **Controller Properties**
3. Under **Access Point** tab -> **Allowed facilities** area, check off the new facility code checkbox to activate it.

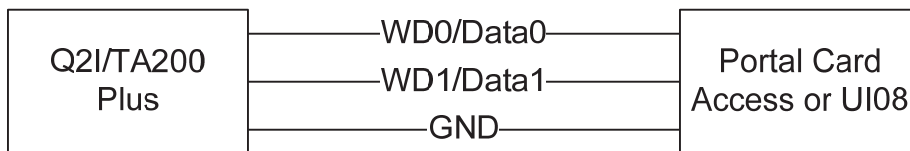
### Step 4: Controller Shared Properties



1. Go to **Controller Shared Properties** item in the list.
2. Make sure that both **26-bit** and **46-bit** options are checked off. This will ensure that both P-ALADDIN24 and Q2I/TA200 Plus device are able to send data to Portal Controller or UIO8 device.

### Step 5: Hardware connection.

Connect the Q2I/TA200 Plus device to Portal Card Access system or to the UIO8 device as per the wiring diagram below.



### Step 6: Q2I/TA200 Plus Finger Print Activation.

On the Q2I/TA200 Plus device, add new finger scan to the FingerTech database.

1. Menu
2. User Management
3. New User



4. ID No. – Refer to the **Appendix A** in the end of the document to generate the FingerTech ID Number based on the user's Portal Card Access card number. Enter the ID Number generated by using the formula provided in Appendix A. Do NOT enter the card number exactly as it appears on the card access card.
5. FP [Enroll Finger Print] – The card holder should now present their finger to the Q2I/TA200 Plus device for scanning.
6. Esc [Accepted Finger Print]

The new user and their finger scan have now been added to the Q2I/TA200 Plus database. The ID number in both devices is identical and all events generated by both devices will be linked to the same user in Portal Card Access database.

#### Appendix A:

To associate the user's finger scan ID with their Portal Card Access card, use this formula to calculate their Q2I/TA200 Plus device ID Number.

$$\text{ID Number} = (\text{Facility Code} \times 2^{16}) + \text{Card Number}$$

E.g. i3 Facility Code is always set to '10', Card Number is 6.

$$\text{ID Number} = 10 \times 65\,536 + 6 = 655\,366$$

Continue using the formula above and the reference table below to generate FingerTech ID Numbers for all Portal Card Access card holders.

Facility Code	Card Number	ID Number
10	1	655361
10	2	655362
10	3	655363
10	4	655364
10	5	655365
10	6	655366
10	7	655367
10	8	655368
10	9	655369
10	10	655370
10	11	655371
10	12	655372
10	13	655373
10	14	655374
10	15	655375
10	16	655376
10	17	655377
10	18	655378
10	19	655379
10	20	655380
10	21	655381
10	22	655382
10	23	655383
10	24	655384

Please contact technical support at [support@i3international.com](mailto:support@i3international.com) or by phone: 1.877.877.7241 if you have any questions or issues.



i<sup>3</sup> International Inc.  
Technical Support and Services  
1.877.877.7241  
[support@i3international.com](mailto:support@i3international.com)