

April 21, 2008

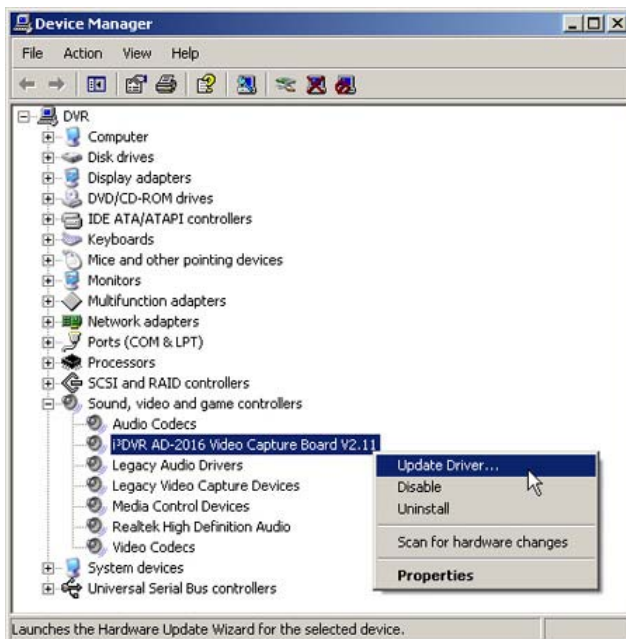
Re: Changing Capture Card Drivers

Depending on the i³DVR software version, a different capture card driver may be required. Consult the table below for capture card driver requirements.

Software version	Capture card driver version
SRX NTSC/PAL v. 5.025 and below	AD-2016_2.2
SRX-Pro NTSC 1.4xx and below	AD-2016_2.11
SRX-Pro PAL 1.4xx and below	AD-2016_2.2
SRX-Pro NTSC/PAL 1.5xx and above	AD-2016_3.2

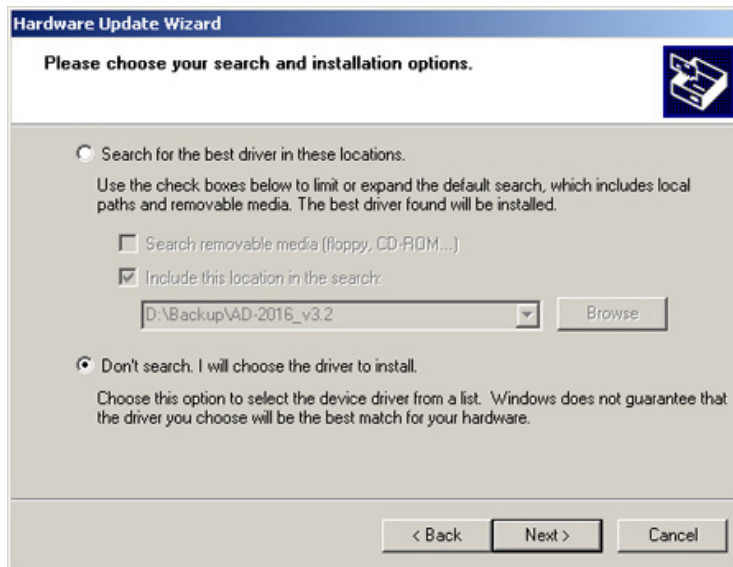
To change the capture card driver, follow the instructions below:

1. Close Server software by pressing **Ctrl + Alt + Shift + F4** simultaneously on the keyboard. Enter the password in the confirmation window.
2. Access Control Panel and double-click the **System** icon. In the System Properties window, go to Hardware tab and click **Device Manager** button.
OR
Locate My Computer icon, right-click and select **Manage** from the context menu. Select Device Manager in the Computer Management tree list in the left pane.
3. Expand Sound, video and game controllers list.
4. Select the current i³DVR Video Capture Board driver, right-click and select **Update Driver...** from the context menu.

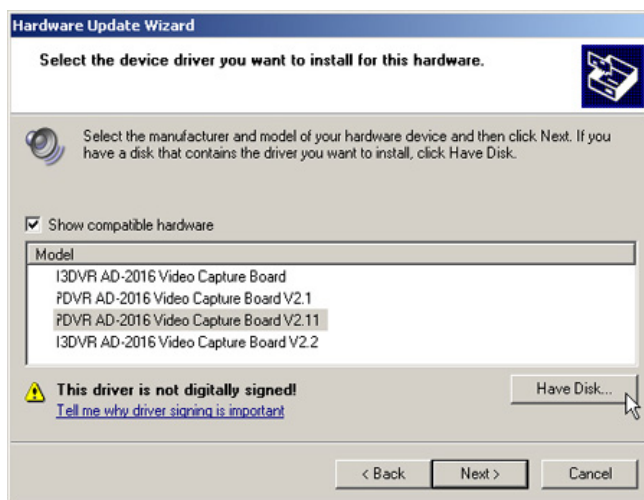


5. In the Hardware Update Wizard window, select **No, not this time** radio button and click **Next**.
6. Select **Install from a list of specific location (Advanced)** radio button and click **Next**.

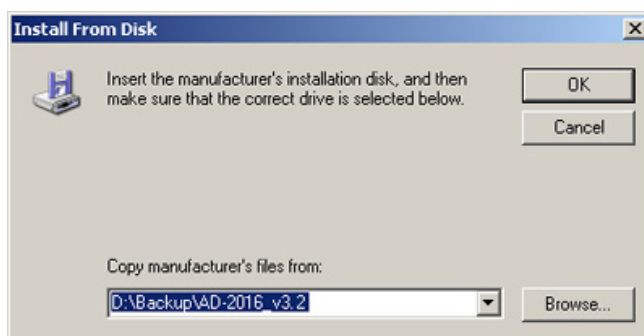
7. Select **Don't search. I will choose the driver to install** radio button and click **Next**.



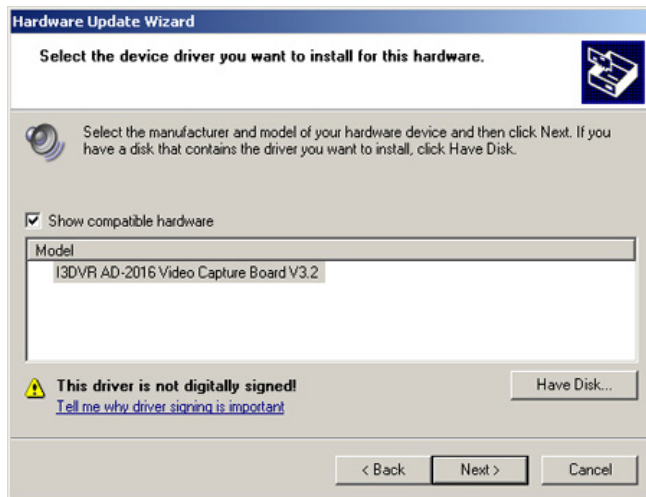
8. In the next Hardware Update Wizard window, click **Have Disk**



9. Install From Disk window will be displayed. Click **Browse...**, locate the *.inf driver file in the driver folder and click **Open**. Click **OK** to close the Install From Disk window.



10. In the Model list, I3DVR AD-2016 Video Capture Board V3.2 driver should be displayed (see image below). Click Next to proceed with the driver upgrade.

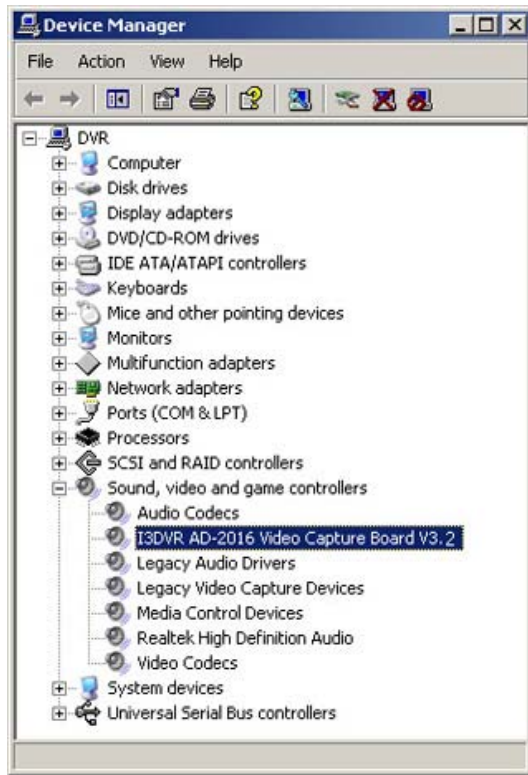


11. In Hardware Installation window, click Continue Anyway.



12. Wait for Completing the Hardware Update Wizard window to be displayed. Click **Finish** to complete the driver change.

13. To confirm the successful driver change, make sure that the Video Capture Board driver version corresponds to the installed driver version. (E.g. V3.2 in the example below).



With any questions, please contact our technical support at 1.877.877.7241 or support@i3dvr.com

Thank you very much for your attention and cooperation.
Best regards,



Olga Alexeenko
Training Coordinator
1.416.261.2266 x135
oalexeenko@i3dvr.com