



Re: Video Pilot Client v7.3.2.16 Release Notice

March 30, 2023

To all of our customers and partners;

This bulletin is the official notice of the Video Pilot Client v7.3.2.16 (Build 16-Mar-2023) release. The new software installation package is now available for download from the i3 website: https://i3international.com/support/download.

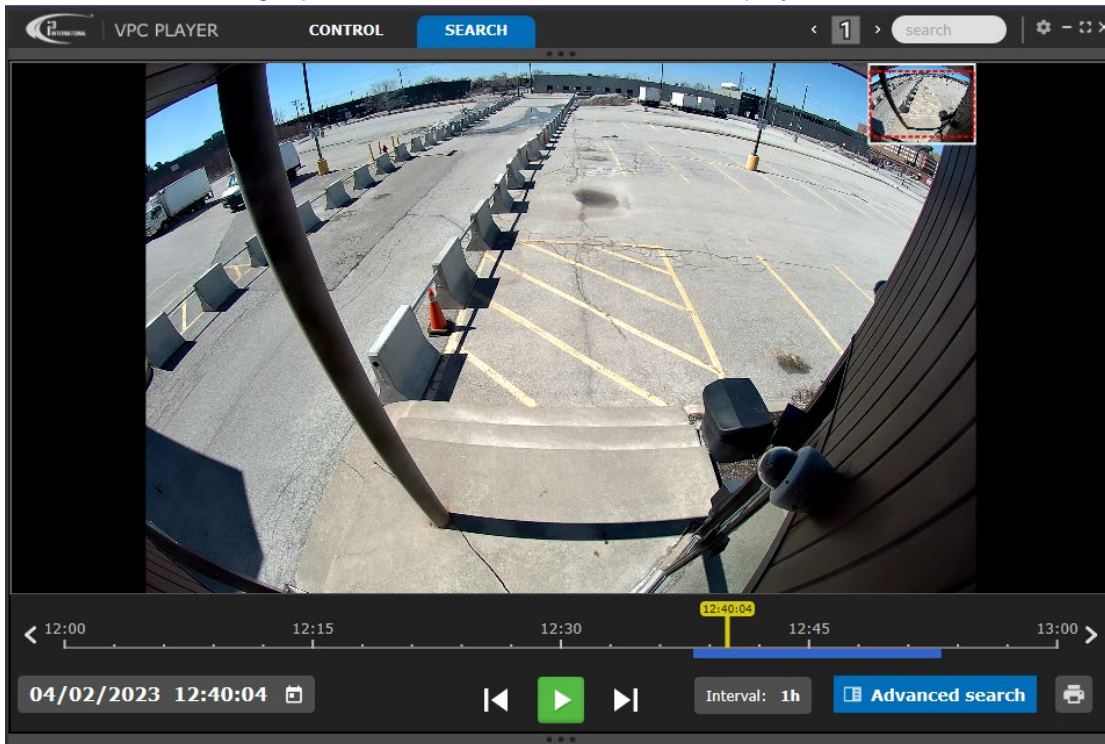
Effective Monday, April 3, 2023 this release package is used as the default Production software version for all standard NVRs. To continue receiving your NVRs with an earlier version of SRX-Pro/VPC v7, please speak to your RSM to arrange for a "Special Routing" to be created for your NVRs.

New Features:

- i3 VPC Player - new stand-alone *.i3d/*.i3c player. (#48532)

VPC Player replaces both the SRX-Pro Player and i3Playback legacy video players. VPC Player is i3's new universal encrypted video player that is exported with each *.i3d/*.i3c backup. VPC Player is future-proof as it supports both the current as well as v10 file storage structure.

VPC Player supports digital zoom function - use your mouse wheel to zoom in/out of the video. Other supported functions include instant snapshot, main/sub stream switching, calendar navigation, timeline interval change, print, add other *.i3d/*.i3c files to the playback.



CONTACT US

www.i3international.com

Toll free: 1.866.840.0004
Tel: 416.261.2266
Fax: 416.759.7776

CANADA

i3 International Inc.

780 Birchmount Rd, Unit 16
Toronto, Ontario
M1K 5H4, Canada

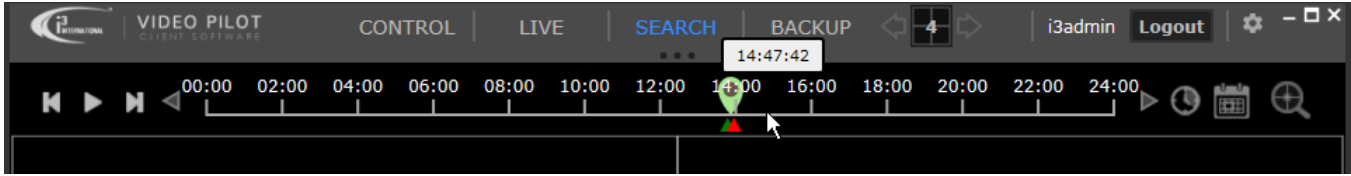
USA

i3 America (Nevada) Inc.

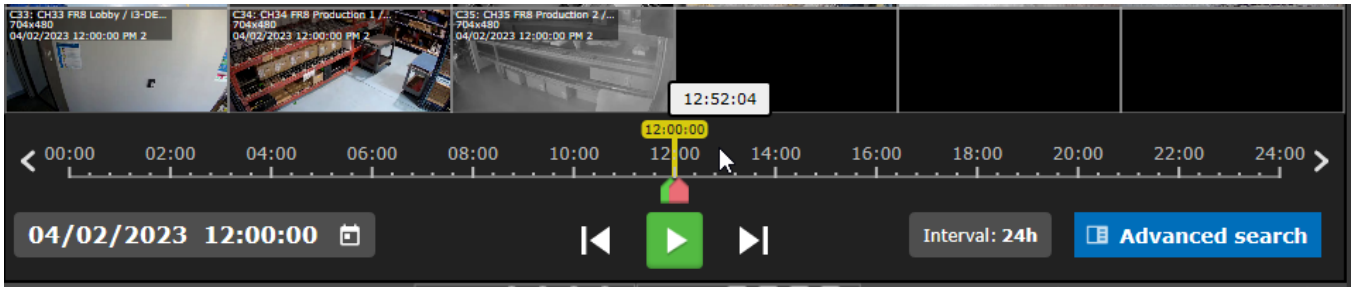
4001 Cobb International Boulevard,
Kennesaw, GA 30152

- Search mode updated layout and design (#50385, #53876)

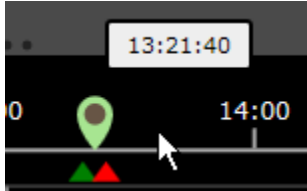




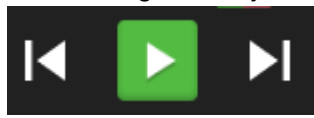
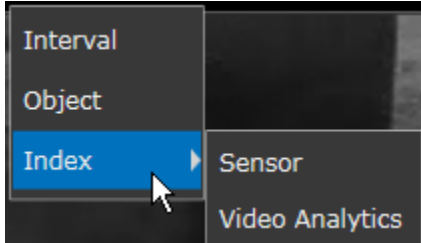
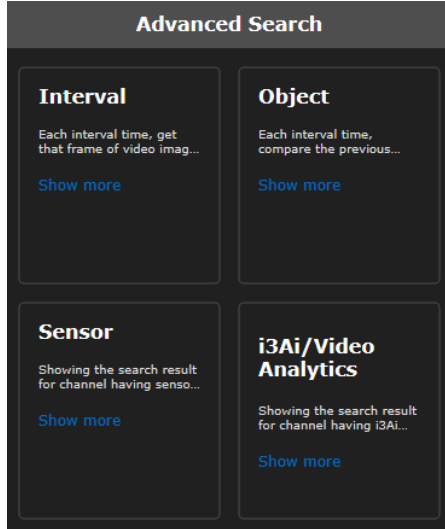
VPC 7.2 (previous design) search timeline. Global timeline is located at the top of the screen.

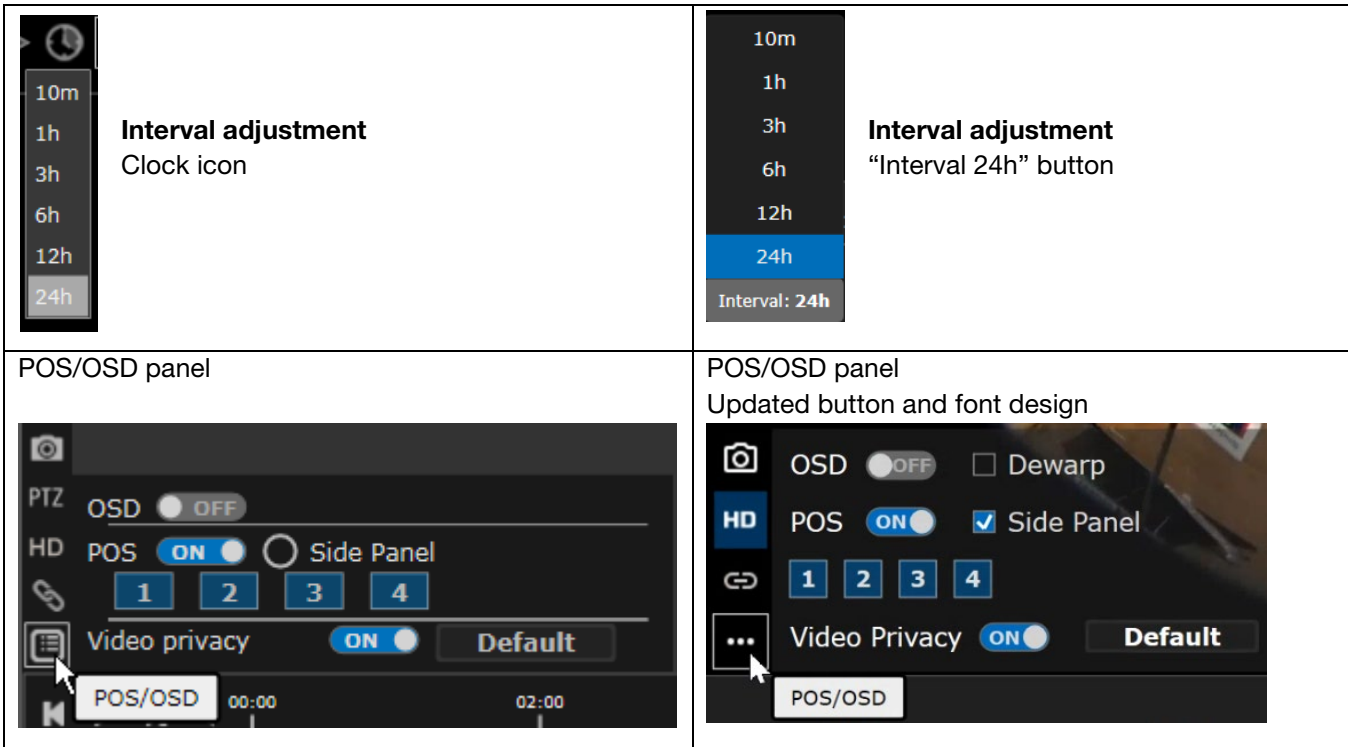



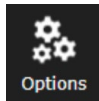
VPC 7.3 (new design) search timeline. Global timeline has been moved to the bottom of the screen.

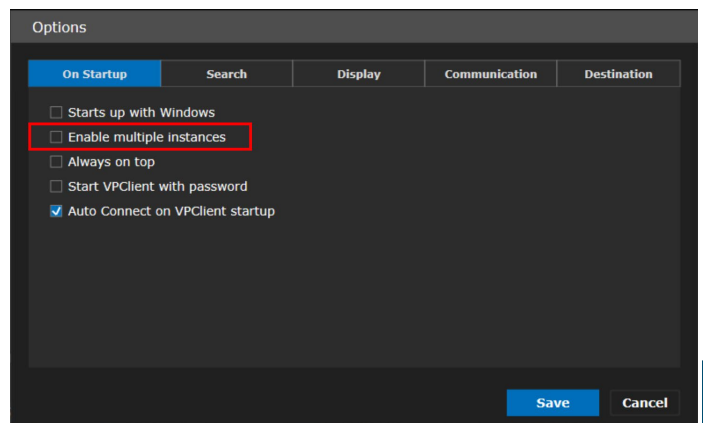
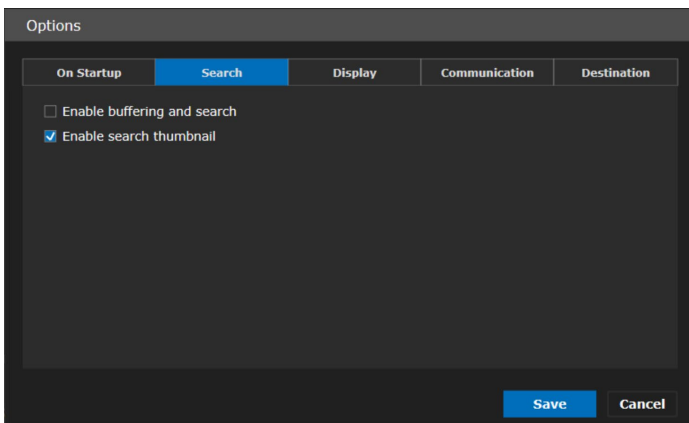


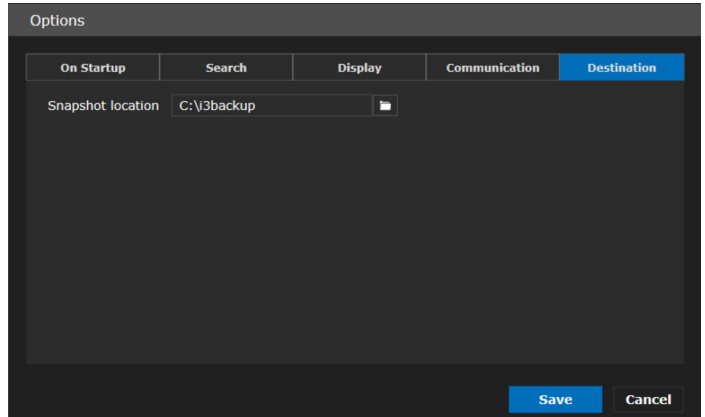
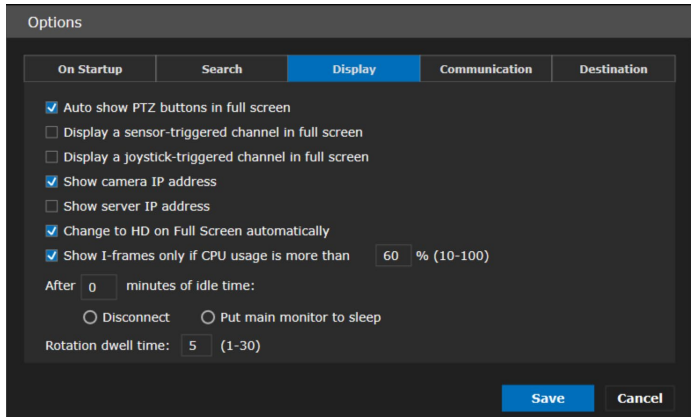
VPC 7.2 design element	VPC 7.3 design element
Global Search timeline position – at the top	Global Search timeline position – at the bottom
Calendar Calendar icon, located in the top right-hand corner	Calendar Date/time button, located in the bottom left-hand corner

<p>Start marker Green tear-shaped marker. Cursor time shown in the white rectangle.</p> 	<p>Start marker Yellow line start time marker with precise time. Larger green/red start/end time markers. Cursor time is still shown in the white rectangle.</p> 
 <p>Advanced search icon.</p>	<p>Advanced search button (opens a search panel)</p> 
<p>Playback controls Located in the top left-hand side corner.</p> 	<p>Playback controls Larger buttons, centered on the screen. Prominent green Play icon</p> 
<p>Advanced search menu</p> 	<p>Advanced search panel</p> 

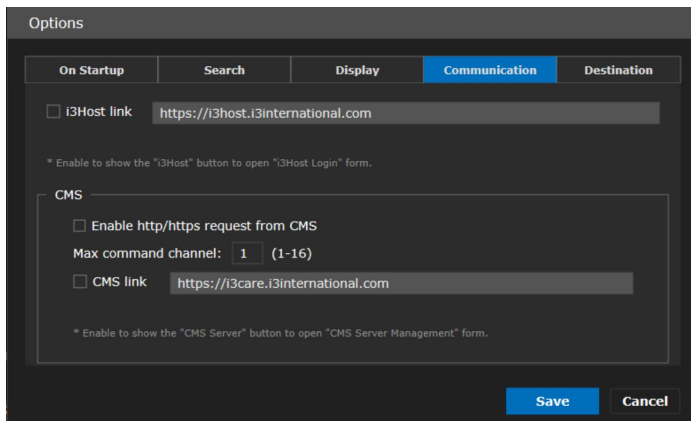


- **Options Settings**  >  Updated layout and design ([#53656](#)). The setup settings have been split up into 5 groups for easy setup navigation.
- **Enable multiple instances** option (disabled by default) has been added ([#53624](#)). When enabled, several instances of VPC can be launched at the same time.

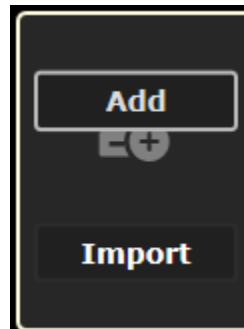




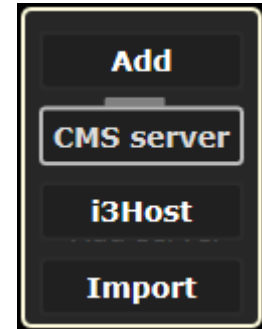
By default, “CMS server” and “i3Host” login options are not shown in the CONTROL tab. (#53655, #53656, #57172)
 To re-enable those login options, go to **Settings > Options > Communication** and enable **i3Host link** and/or **CMS link**.



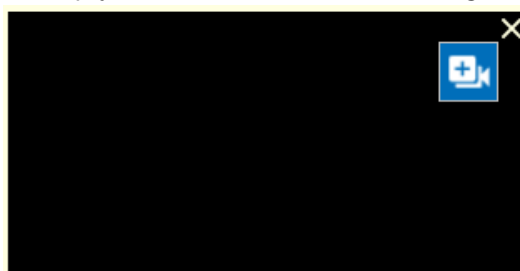
CONTROL > Add
 Server with login
 options **disabled**



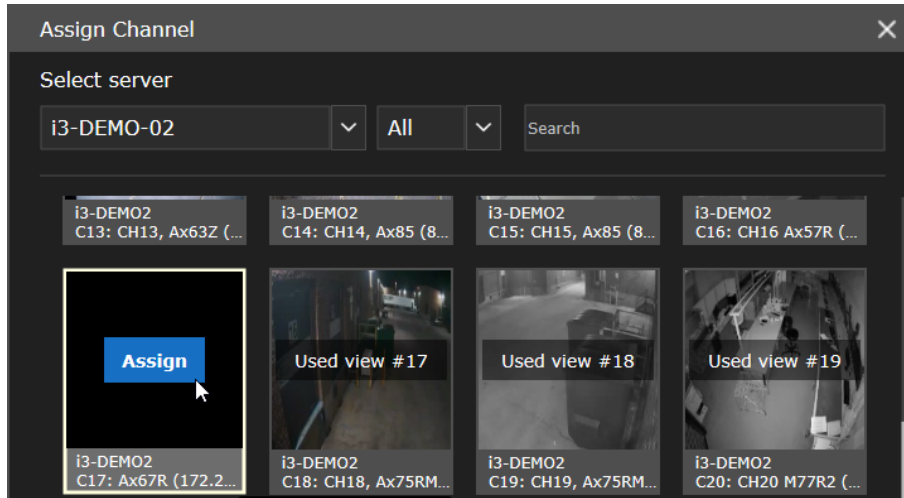
CONTROL > Add
 Server with login
 options **enabled**



- Support **Assign Channel** option in Live mode. (#20206)
 In addition to drag-and-drop option, the user can assign a specific video feed to any position on the screen. Hover over a video thumbnail or over an empty division and click on the Assign Channel icon.



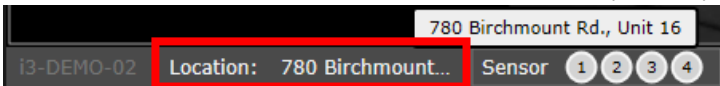
In the Assign Channel, use the Search field to quickly locate the preferred channel or scroll up and down to find the channel preview thumbnail. Hover over the tile and click **Assign**.



- Support French GUI ([#57514](#))

Improvements:

- Add Location information to the bottom status bar ([#58581](#))

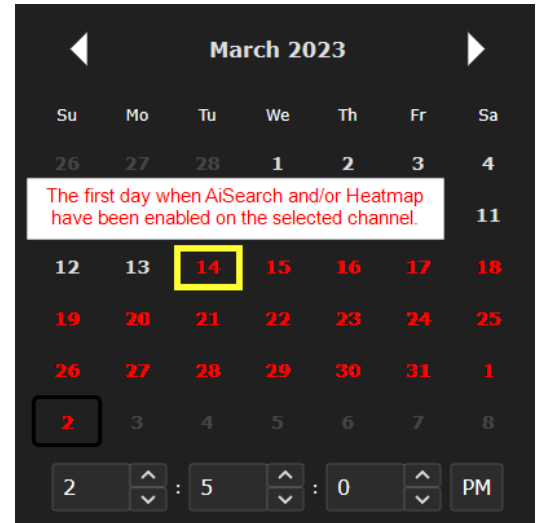


- Cloud Files playback support for SRX-Pro v.7.3.X.X ([#47225](#))
The tab formerly called “Cloud Backup” has been renamed to “Cloud Files”. Cloud video playback has been supported since v7.2.2.30. As before, i3Host account is required, subject to Cloud Storage subscription fees.
- Hide VTS-associated controls from the bottom status bar (“Enable Velocity Timer” is ON in SRX-Pro Setup) to prevent accidental VH10 reset ([#58297](#))
- Allow PTZ functionality on Fisheye stream with enabled i3Ai functions (e.g. Traffic & Dwell). ([#55635](#))

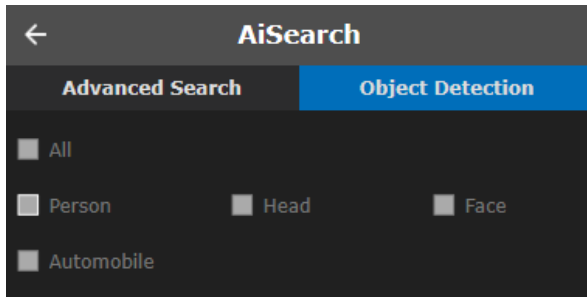


- **Advanced Search > AiSearch > Object Detection** on any selected date, show only object types that are enabled in i3Ai for the selected channel on that date.

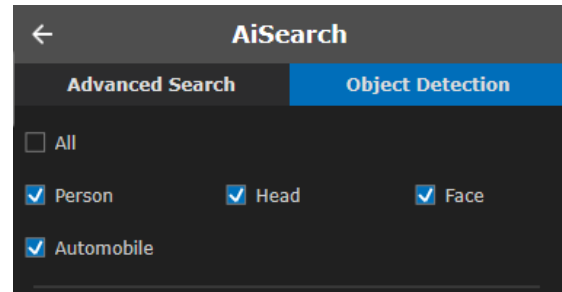
Update AiSearch and Heatmap search calendar to only show the days that have AiSearch or Heatmap enabled, as opposed to showing which days have recording. ([#46272](#), [#45883](#)). E.g. Heatmap and AiSearch (Person, Head, Face and Automobile object types) have been enabled for CH1 on March 14 for. In **Object Detection**, all object types prior to March 14 are grayed out. On and after March 14, Person, Head, Face and Automobile object types are available for selection. The Heatmap and AiSearch calendar shows days on and after March 14 in red color, even though there is video recording as far back as December.



Before March 14

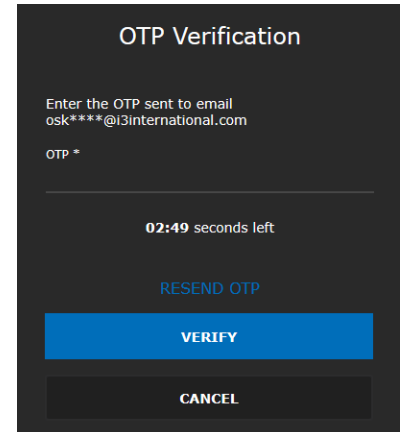
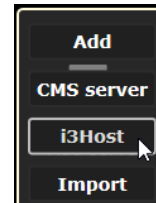
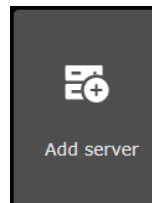


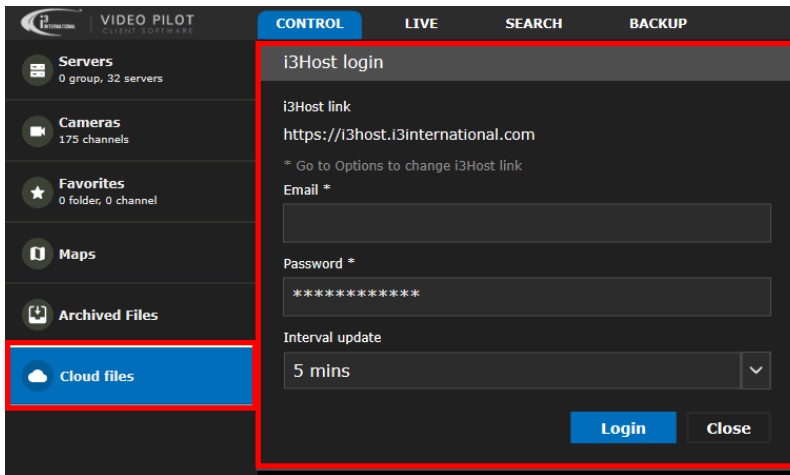
March 14, onwards



- **i3Host improvements**

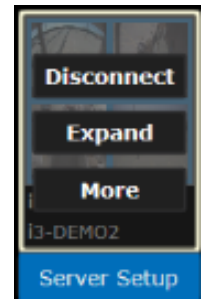
- i3Host OTP login support ([#46672](#))
- i3Host dialog improvements ([#49204](#), [#46245](#), [#46268](#), [#47834](#), [#49356](#), [#53653](#)). Access i3Host login by clicking **Cloud Files** in the **CONTROL** tab.
- In case of server duplication, prompt the user whether to keep previously (manually) added server or to overwrite it from i3Host. ([#47052](#))
- Where both i3Host and CMS connections are configured, CMS list takes priority in duplication cases. i3Host list will overwrite manually-added connections only, but will not overwrite connections added from CMS list ([#55107](#)).





General Performance Improvements

- Support **Y** and **N** keyboard keys to accept or reject dialog options instead of using the mouse. (E.g. “Yes/No”, “OK/Cancel, etc.) ([#47203](#))
- Video.exe command improvement: when a 3rd party application calls video.exe, video.exe will call VPC with a specific Windows account. ([#47106](#))
- Display a warning message when connecting to VPC using expired or locked CMS used credentials ([#47185](#))
- Launch SRX-Pro in the default browser instead of IE ([#47103](#))
- Improve “Starts up with Windows” VPC option. VPC will launch on Windows restart only after SRX-Pro Service and SRX-Pro Monitor are running, if installed. ([#46962](#))
- Allow all sub dialogs (pop-up messages and forms) to be moved around on the screen ([#34649](#))
- Maintain a single login connection to the CMS for update Relay Server information throughout the session. Previously, VPC would login into CMS once every minute.) ([#51087](#))
- Support relay connection from CMS or third party http/https/video command ([#56126](#))
- Identify unique media servers by a UID: Server ID + IP + Port instead of just Server IP + Port alone ([#55800](#))



New Features in testing stage

- Face Similarity advanced search. Available with i3Ai AiSearch function only, subject to licensing fee ([#46222](#), [#57996](#)). Please contact your sales rep to learn more.

Fixes

- Various fixes and performance improvements ([#46273](#), [#47257](#), [#46833](#), [#48363](#), [#48755](#), [#48929](#), [#48943](#), [#48948](#), [#50703](#), [#53366](#), [#58739](#), [#54903](#))
- Resolve an issue where VPC becomes stuck in the Full Screen mode ([#53369](#))
- Playback skips forward several seconds after pausing ([#50438](#))



VPC v7.3 Compatibility Table.

Note: For i3 application compatibility, refer to i3's [Software Compatibility Chart](#)

i3 Application / Device	Compatibility
VPC Configuration	VPC v3.0 and higher
SRX-Pro	SRX-Pro v.5.0 and higher
PACDM	PACDM v7.26.2.128 or higher PAC Converter v3.6.2.63 or higher
i3Ai	i3Ai v7.3.2.2 or higher

About Version:

Version 7.3.2.16

Build Date: March 16, 2023

Please contact technical support if you have any questions or issues.

Email: support@i3international.com

Tel.: 1.877.877.7241

CONTACT US

www.i3international.com

Toll free: 1.866.840.0004

Tel: 416.261.2266

Fax: 416.759.7776

CANADA

i3 International Inc.

780 Birchmount Rd, Unit 16

Toronto, Ontario

M1K 5H4, Canada

USA

i3 America (Nevada) Inc.

4001 Cobb International Boulevard,

Kennesaw, GA 30152