



Re: PACDM v7.26.2.109 Release Notice

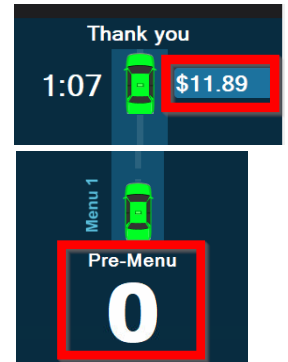
January 4, 2023

To all of our customers and partners.


This bulletin is the official notice of the **PACDM v7.26.2.109** release. Effective **Tuesday, December 20, 2022** this release package is used as the default Production software version for all NVRs. The software installation package is now available for download from the i3 website: <https://i3international.com/support/download>

New Features:

- Support the new i3 VTS (Velocity Timer) and Leader board PVM layouts (v7.26.2.30, #36638 | v7.26.2.38, #45623, #45626 | v.7.26.2.56, #46951).
 - Velocity Dashboard PVM supports 10 widget types that can be arranged in one of the 8 available PVM layouts, up to a maximum of 9 at-a-time. Each widget's PVM display name is fully customizable.
 - All service time-based widgets are color-coded green/orange/red to indicate whether the current service time is within or outside of the set service time goal.
 - The visual representation of the drive-through lane on the right-hand side shows one of the selected layouts: Single, Y-lane or Dual Menu Single (v7.26.2.89; #51524).
 - Vehicles are represented by the car icons accompanied by their current service time and the transaction total \$ amount (v7.26.2.56, #46955). The cars and their service times are also color-coded to indicate whether the service time is within or outside of the set service time goals.
 - The number of vehicles currently in the "danger" drive-off pre-menu zone is displayed below the drive-thru lane panel. (subject to compatible Edge Ai camera availability) (v7.26.2.56, #46958)



BK-03239 Day Part: 16:00 - 17:00 Thursday, December 22, 2022

| | | |
|---|---|--|
| P/U Window 2:15 Avg 0:55 Goal 1:30 | Lane Total Time 2:23 Goal 5:00 | Cars Per Hour 4 Best 38 Prev 20 Goal 30 |
| Spending history \$0.00 No. of visits 0 time(s) HIGH VOLUME ITEMS |  | Menu Time 0:13 Avg 1:07 Goal 1:00 |

Thank you

4:48 \$19.36

Menu 1

Pre-Menu

0

CONTACT US

www.i3international.com

Toll free: 1.866.840.0004
 Tel: 416.261.2266
 Fax: 416.759.7776

CANADA

i3 International Inc.

780 Birchmount Rd, Unit 16
 Toronto, Ontario
 M1K 5H4, Canada

USA

i3 America (Nevada) Inc.

4001 Cobb International Boulevard,
 Kennesaw, GA 30152

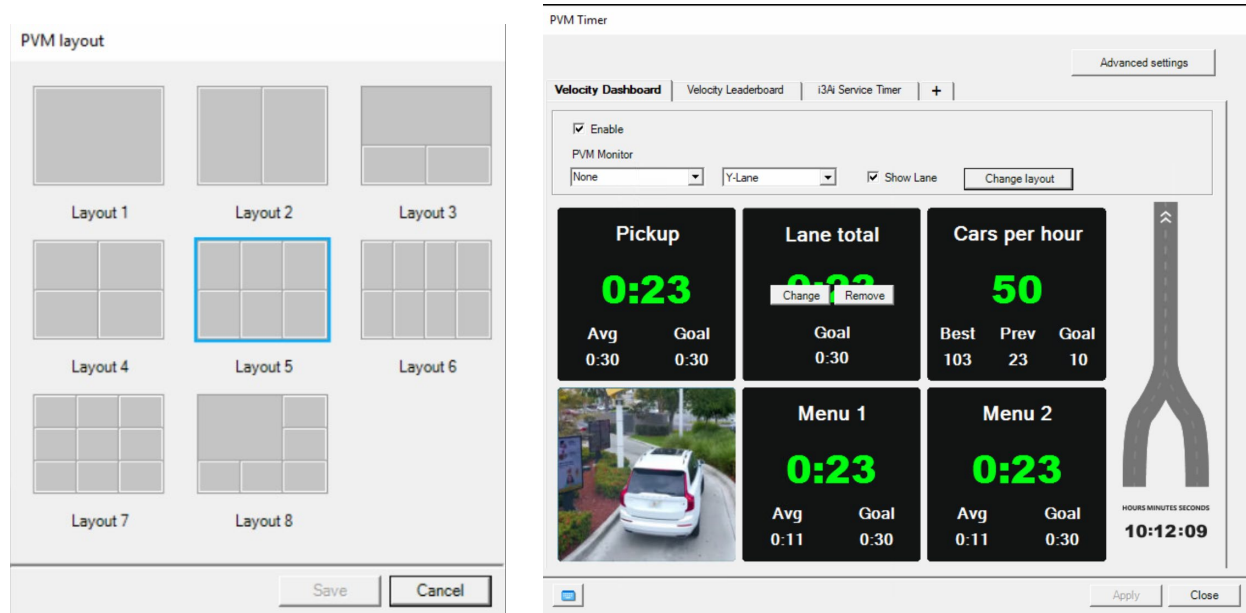


Supported widgets:

- **Menu 1 & 2** service time, incl. average and goal times.
- **Lane Total Time**, incl. goal time.
- **Cashier** window service time, incl. average and goal times
- **Pickup** window service time, incl. average and goal times
- **Spending history** (tied to the vehicle license plate, subject to LPR camera availability). Displays the number of visits as well as the list of frequently-purchased items.
- **Live video** feed (camera facing the drive-thru lane is recommended)
- **Cars Per Hour**, calculated for the current pre-configured day part. Includes Best, Previous (for previous day), and Goal numbers.
- **Curbside Pickup**. Monitors two parking spots reserved for curbside pickup. Includes the current, average and goal service times. (subject to compatible Edge Ai camera availability).
- **Upsell items**. Monitors the number of items sold currently identified for an upsell campaign. Includes Best, Previous, and Goal numbers.
- **Greeting 1 & 2** service time, incl. average and goal times. Measures and monitors the time between the vehicle approaching the Menu board and the order taker’s greeting.
- **i3 Logo/Image**. Select to fill in any unused widget layout spots.

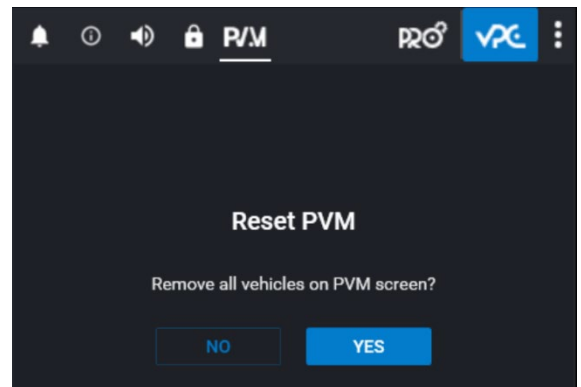
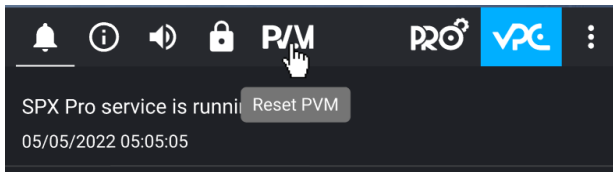
Supported layouts:

Eight distinct Dashboard PVM layouts allow displaying up to 9 unique widgets at-a-time. Assign the desired widget to each available layout position.



Edit Widget

- Edge Ai functionality support of i3's compatible M-series cameras (v7.26.2.109; #55745)
- Reset PVM function via SRX-Pro Monitor. Support resetting the visual drive-thru representation panel by removing all vehicle icons with running timers.



- New and updated POS templates. (v7.26.2.109; #56358 | v7.26.2.95, #52071 | v7.26.2.89, #50773, #51449, #51672, #52038 | v7.26.2.79, #50552, #49538 | v7.26.2.56, #46859)
 - Focus (TCP)
 - Freshfield
 - Radiant (XML)
 - Ultramar
 - Verifone Commander
 - Xpient

CONTACT US

www.i3international.com

Toll free: 1.866.840.0004
 Tel: 416.261.2266
 Fax: 416.759.7776

CANADA

i3 International Inc.

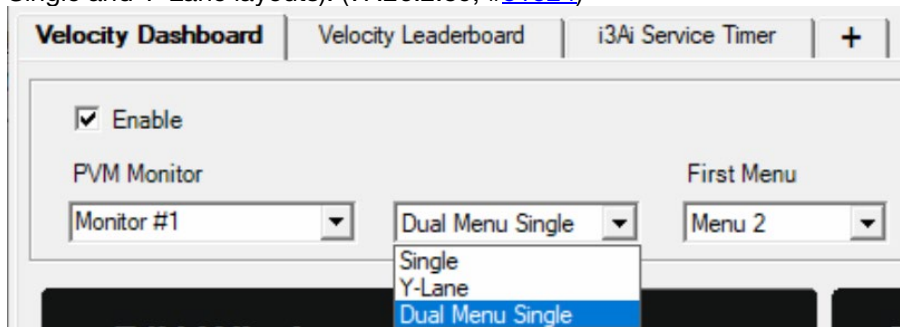
780 Birchmount Rd, Unit 16
 Toronto, Ontario
 M1K 5H4, Canada

USA

i3 America (Nevada) Inc.

4001 Cobb International Boulevard,
 Kennesaw, GA 30152

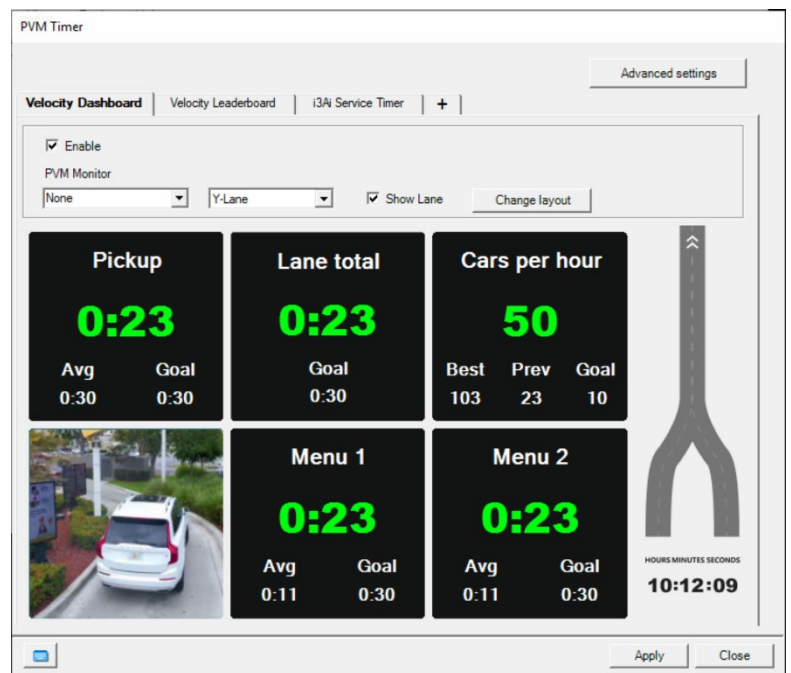
- i3 VTS: Dual-menu Single Lane (one lane, two menu boards) drive-thru layout support (in addition to the Single and Y-Lane layouts). (v7.26.2.89; #51524)



- i3 VTS: Side door curbside delivery support. Where the system detects the side door close after one of the cars in the drive-thru pulls out without following through to the CASH and/or PICKUP windows, the system will recognize that the customer has been served curbside and will remove the car from the visual dashboard. (v7.26.2.89; #51509)
- IP Speaker (SPK1) integration support. (v7.26.2.79, #48052, #48043, #48024)

Improvements:

- On Pre-menu widget of the VTS Dashboard, show only the channels with Edge Ai enabled or channels with i3Ai Area counting enabled and linked to the SRX-Pro. (v7.26.2.109; #55743)
- Improve “ghost” car validation process for the *Dual-menu Single Lane* drive-thru to prevent the removal of valid drive-through instances. (v7.26.2.109; #55195)
- GUI Changes to support correct i3 VTS terminology and naming (v7.26.2.89; #52495)
- Package VTS default settings with the software installation package for easy deployment (v7.26.2.79, #50691)
- Uncheck “Display this store on leader board” setting by default (v7.26.2.79, #51089)
- Exclude items with the price value <=0 from the leader board trophy board calculation. (v7.26.2.79, #49434)
- Maintain LPR data encryption in LPR quick search (v7.26.2.30, #45053)
- Windows firewall rules added for PAC Parser (Regular & XML) (#47635)



Fixes:

- Various improvements to the Focus POS Template (v7.26.2.109; #56540)
- i3 VTS Menu widget: Various enhancements to the Menu count algorithm for improved accuracy (v.7.26.2.95, #52923, #52927)



- Reset PVM function improvement for the *Dual-menu Single Lane* drive-thru (v.7.26.2.95, #52974)
- Improvements to i3's VTS PVM timer algorithm (v7.26.2.89, #52118)
- Empty channel list in the Video/Channel mapping setup for U12 (v7.26.2.79, #51011)
- "Cars per hour" count to be calculated based on the configured day parts, not hours. (v.7.26.2.79, #50347)
- PVM fixes (v7.26.2.56 #49096, #48932)
- Performance improvements (#51141, #51068, #51048, #50114, #50783, #49910, #47142, #47140, #46825, #46595, #46331, #46278, #46246, #46176)

About Version:

Version: 7.26.2.109 32-bit/64-bit
Build Date: November 4, 2022

Release History (Interim Releases)

| Version | Build date |
|---------------------------|-------------------|
| 7.26.2.109 (this version) | November 4, 2022 |
| 7.26.2.95 | August 2, 2022 |
| 7.26.2.89 | June 29, 2022 |
| 7.26.2.79 | May 6, 2022 |
| 7.26.2.56 | February 28, 2022 |
| 7.26.2.38 | November 15, 2021 |
| 7.26.2.30 | October 15, 2021 |

Interpreting the bulletin:

- Speed up recording validation process in the (rare) instances of *.idx file corruption. (v7.1.2.131; #40013)



Please contact our Technical Support team if you have any questions or issues.
Email: support@i3international.com
Tel.: 1.877.877.7241