



July 23, 2019

**Re: Annexus Configuration Tool (ACT) v1.6.2.2 Release Notice**

To all of our customers and partners;

This bulletin is the official notice of the **ACT v1.6.2.2** release.

i3 Annexus Configuration Tool is an IP finder utility for convenient pre- and post-installation management of i3 IP devices, including cameras, encoders and UIO8 control/sensor device.

The newest released version of ACT can be downloaded on i3 website:

<https://i3international.com/support/download> > **PRO** > **SRX-Pro Add-ons** section

**New Features / Improvements:**

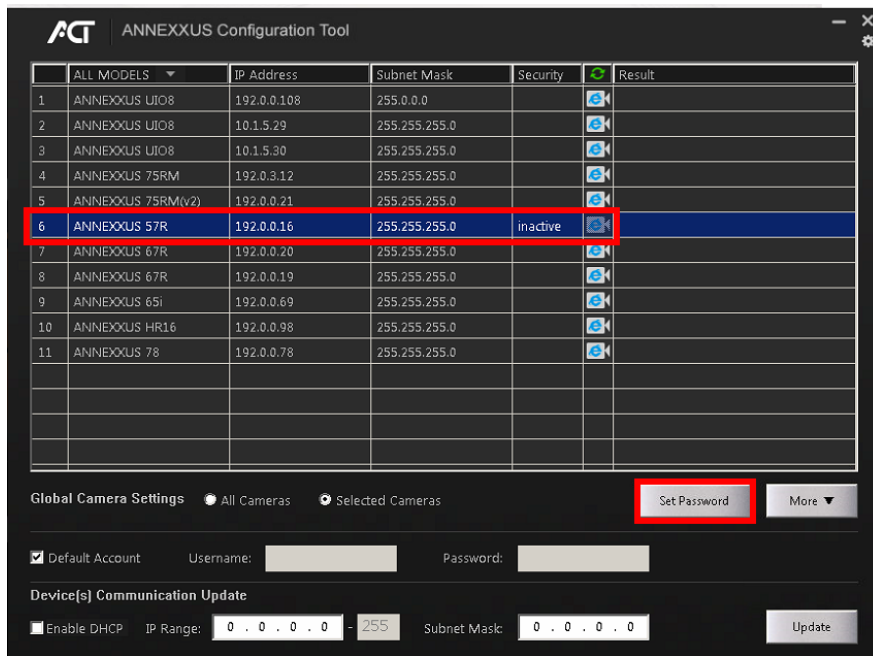
1. Supports the initial setting of the administrator password (in compliance with “Security of Connected Devices” bill SB-327).  
New Annexus devices will require administrator password change before new IP address can be assigned to the device or any other setting changes can be made.  
See “[Changing administer password](#)” section below for more information.
2. Import / Export camera settings feature added. Convenient feature for pre-staging of large installations. Configure the camera settings (except for IP settings) on the “master” camera through camera’s FW GUI via IE browser and then copy the custom settings from the “master” camera to some or all the cameras of the same model. Note that all i3 cameras are already pre-configured with recommended settings (except for unique IP address and, for some devices, unique admin password), so this step is optional.  
See “[Import/Export camera settings](#)” section below for more information.
3. Import Camera Names using existing Export/Import Camera List function. This new function allows assigning custom names to the i3 cameras. Note that these names are visible only in the camera’s FW GUI (via IE browser) and cannot be seen through i3’s VPC or SRX-Pro applications. This feature is optional and can be used as a backup camera naming strategy in an unlikely event that SRX-Pro configuration is lost through HDD or other failure.  
See “[Import camera names](#)” section below for more information.
4. Supports Annexus 57/77-series and 76-series (pending release)

**Changing administrator password.**

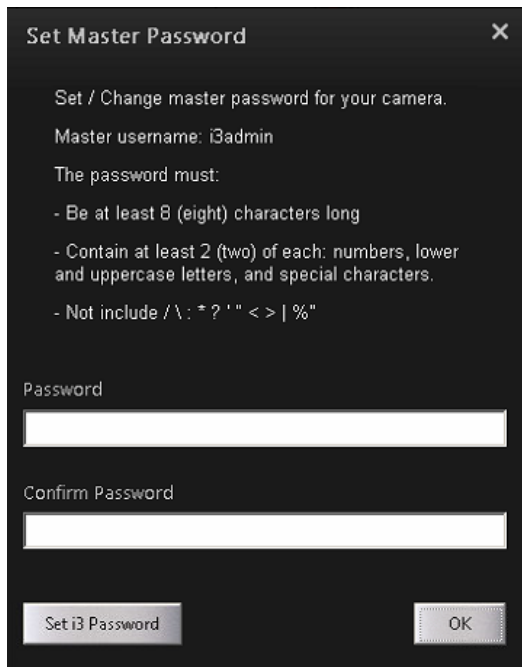
All newer i3 Annexus cameras require that a new administrative password be assigned to them on the first startup. Note that i3 camera’s default administrative username is **i3admin** and the default camera IP is

**192.0.0.16**. To set the new administrative password for i3admin account,

1. Launch ACT v1.6. Locate a compliant Annexus device in the list. The device in compliance with the bill SB-327 will be shown as “inactive” in the Security column.
2. Select one or more “inactive” devices in the list. To select multiple lines at the same time, hold down Ctrl or Shift key while using your mouse cursor to select “inactive” items.
3. Click **Set Password**.



- In the Set Master Password window, enter your new administrative password in the **Password** field. The new password must meet the listed security requirements. Re-enter the password in the **Confirm Password** field and click **OK**.

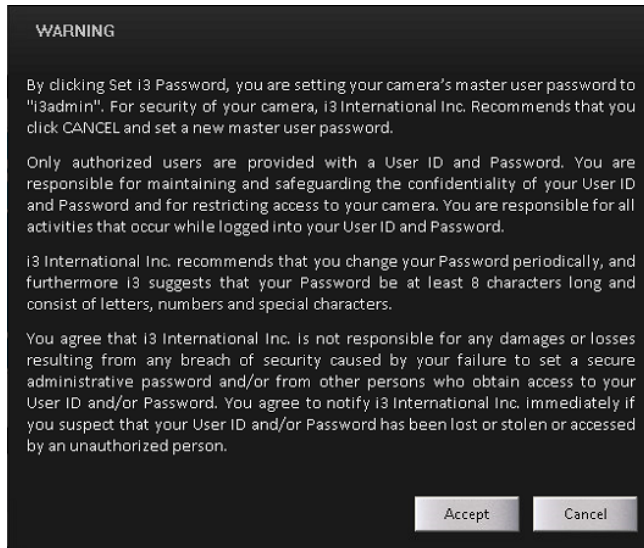


**Tip:** Make sure to store the new password information in a secure place.

Hardware password reset is available for all and remote password reset is available for many i3 camera models, but both methods may be inconvenient due to the labor and/or time requirements once the administrator password is lost.

ALTERNATIVELY, you may choose to set i3 Password (i3admin) to your selected “inactive” i3 devices (not recommended). To do so, click **“Set i3 Password”**. A warning disclaimer will be shown. Please read the disclaimer carefully before proceeding. You must agree to the disclaimer to assign i3 default password to your selected “inactive” i3 devices.

Once you click **“Accept”**, the password for selected devices will be set to **i3admin**. From then these i3 devices will be automatically recognized by ACT and SRX-Pro software as having “default” credentials.



Once the administrative password is assigned, the Security status of your devices will change to “active”. You can now assign a unique IP address or IP range to your device(s) or make other setting changes.

6	ANNEXXUS 57R	192.0.0.16	255.255.255.0	active	
---	--------------	------------	---------------	--------	---

### Import/Export camera settings

Import/Export camera settings is a convenient feature for pre-staging of large installations. Each i3 camera offers a variety of configurable features, accessible only through firmware interface (via IE). If a large number of i3 cameras must have a specific setting adjusted from the factory default, it can quickly become a time-consuming task. The new Import/Export camera settings feature automates this process.

#### Example

The customer is installing a number of Ax75 cameras in the warehouse inventory aisles. Since the aisles are narrow, it makes most sense to enable the cameras’ internal “Corridor” feature, which rotates the image vertically, 90 degrees. This feature can only be activated by logging into the camera’s firmware interface. The steps below will demonstrate how to enable the “Corridor” feature on a number of Ax75 cameras all at once, without having to log into each camera individually through the IE browser.

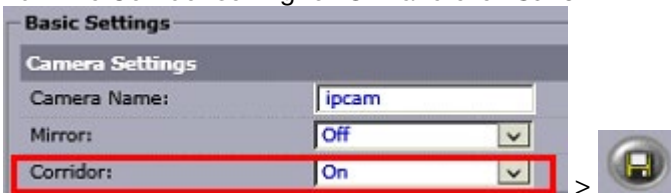
1. Start by logging into one Ax75 “master” camera. You will configure the camera’s firmware settings to match your installation requirements.

To quickly access the camera’s firmware interface, click on the camera’s IE icon in the ACT. 

2. Login by entering the camera’s admin username: **i3admin** and the camera’s password. The admin password for older Annexxus devices is **i3admin**.
3. Click on the Setup icon, then click **Advance Setup**.



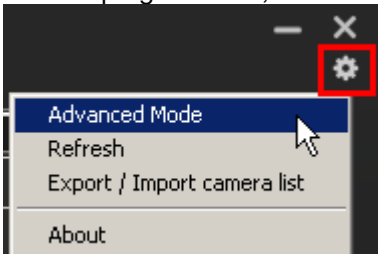
4. Turn the Corridor setting to “On” and click **Save**.



5. Close the IE browser window and return to the Annexxus Configuration Tool v1.6.
6. In the camera model menu, select ANNEXXUS 75.  
Note: Import/Export camera settings feature can be used only for the devices of the same model.

	ANNEXXUS 75	IP Address
1	ANNEXXUS 75RM	192.0.3.12
2	ANNEXXUS 75RM(v2)	192.0.0.21

7. In the top right corner, click on the gear icon and select **Advanced Mode**.



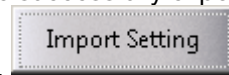
8. Select your “master” Ax75 camera, which you have configured in the Steps 1-4 and click



**Export Settings.**

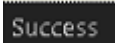
9. In the Save As window, select the folder where the configuration file will be saved to and click **Save**.

The result column will show “Success”  once the settings were successfully exported.



10. In the ACT, select one or more Ax75 cameras and click Import Settings.

**Tip:** To select multiple lines at the same time, hold down Ctrl or Shift key while using your mouse cursor to select the cameras.

- In the Open window, select the previously exported \*.gz file and click **Open**. Click **Yes** in the confirmation window. The result column will show “Success”  once the settings were successfully imported.

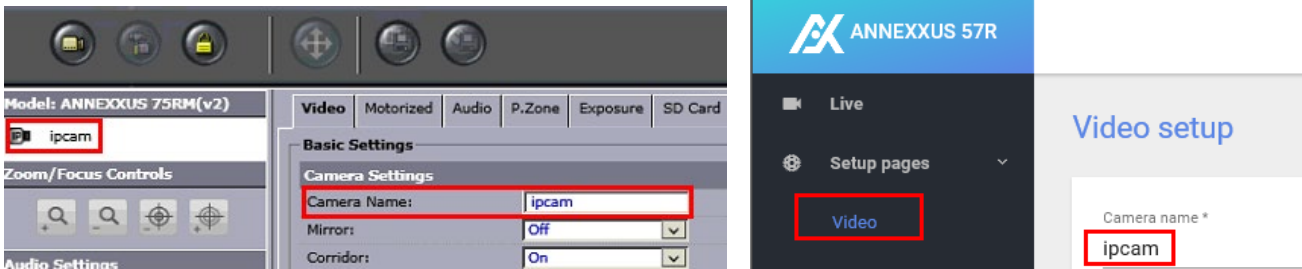
### Import camera names

ACT v1.6 allows assigning custom device names to Annexxus cameras in bulk by importing those names from a \*.csv spreadsheet.

Note that these custom names are visible and can be changed only in the camera’s FW GUI (via IE browser) and cannot be seen through i3’s VPC or SRX-Pro applications. This feature is optional and can be used as a backup camera naming strategy in an unlikely event that SRX-Pro configuration is lost through HDD or other failure.

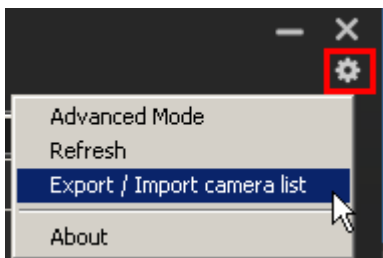
**Important:** The following i3 devices do **NOT** support this feature: UI08, HR16, HR16v2, Ax68/78/98.

The camera name can be configured inside the camera’s **Video** setup. Default camera name is set to “**ipcam**”.

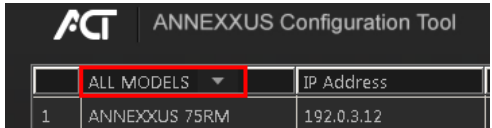


To import the custom camera names in bulk,

- In the top right corner, click on the gear icon and select **Export / Import camera list** and click **Export**.



**Tip:** Note that the only the cameras currently shown on the screen will be exported. To export all Annexxus devices found on the network, make sure that the model selection menu is set to **ALL MODELS**.

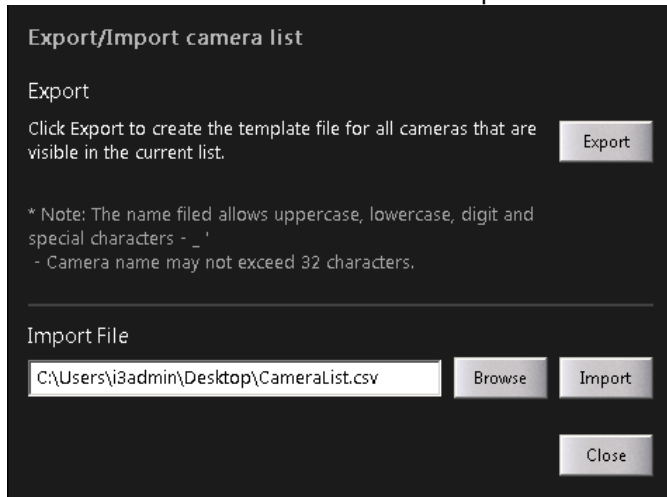


	ALL MODELS	IP Address
1	ANNEXXUS 75RM	192.0.3.12

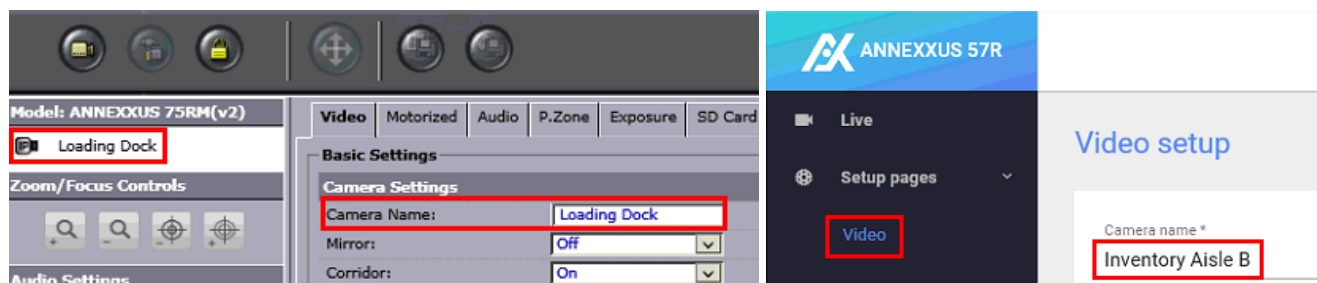
- In the Save As window, select the folder where the \*.csv file will be saved to and click **Save**. Click **Close** or **Open File** in the confirmation menu to start editing.  
**Tip:** The most convenient way to assign new camera names is through Excel or other spreadsheet software.
- Open the \*.csv file and enter the camera names (32 characters maximum) in the corresponding column, as shown. Save the \*.csv file.

Model Name	Camera Name. 32 characters max	IP Address	Subnet Mask	MAC Address	Firmware Version	Serial Number	Security
ANNEXXUS 75RM	Front Door	192.0.3.12	255.255.255.0	18:f8:7a:03:4c:6f	28-53	P71400462	
ANNEXXUS 75RM(v2)	Loading Dock	192.0.0.21	255.255.255.0	18:f8:7a:04:1b:83	28-53	P82101471	
ANNEXXUS 57R	Inventory Aisle B	192.0.0.16	255.255.255.0	18:f8:7a:05:01:11	07-09.dev	P92400148	active
ANNEXXUS 67R	Office	192.0.0.20	255.255.255.0	18:f8:7a:01:14:08	02_66-117	P52400415	
ANNEXXUS 67R	Lunch Room	192.0.0.19	255.255.255.0	18:f8:7a:01:14:07	02_71-128m	P52400414	
ANNEXXUS 65i	Server Room	192.0.0.69	255.255.255.0	18:f8:7a:03:5c:ee	02_47-101	P72200025	

- In the Export/Import camera list window, click **Browse**.
- In the In the Open window, select your edited \*.csv file and click **Open**.
- Click **Import** and click **Yes** in the confirmation window.  
The result column will show one of four possible results: "Success", "Failed", "No change" or "No support".



The custom camera names for supported devices can now be seen in the camera firmware interface.



Email: [support@i3international.com](mailto:support@i3international.com)  
 Tel.: 1.877.877.7241  
 Live Chat: <http://i3chat.i3international.com/chat>