

Re: Synchronizing i3's Cortex switch restart time with SRX-Pro NVR restart schedule.

To all of our customers and partners;

As part of normal unit maintenance and to reduce the system downtime, i3 International recommends synchronizing i3's Cortex switch restart time with the SRX-Pro NVR recommended weekly restart time.

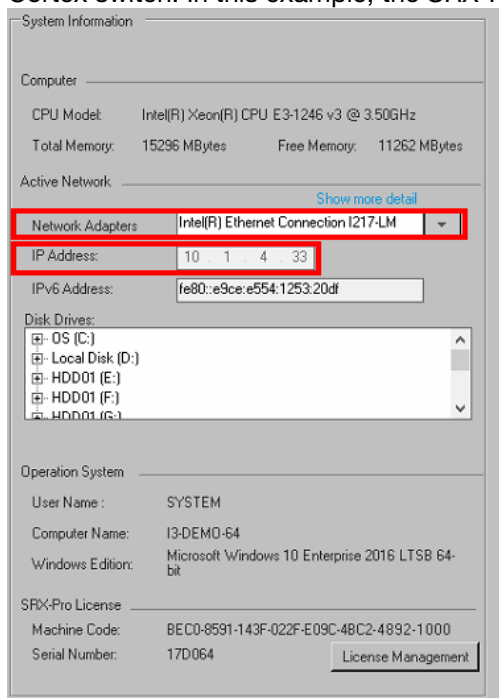
Minimum hardware/software requirements:

- SRX-Pro v.6.0 and above
- i3 Cortex switches S81, S242, S243 FW v.6.54.2405 and above

Before you begin, you will need the **IP address of your Cortex switch** and the **IP address of the i3 SRX-Pro NVR's NIC card** that is connected to that switch.

To find out the IP address of the SRX-Pro NIC card:

1. Go to SRX-Pro Setup > Server Info tab.
2. In Network Adapters drop-down menu, select the network adapter (NIC) that is connected to the Cortex switch. In this example, the SRX-Pro NIC IP is **10.1.4.33**



CONTACT

www.i3international.com
Toll free: 1.866.840.0004
Tel: 416.261.2266
Fax: 416.759.7776

CANADA

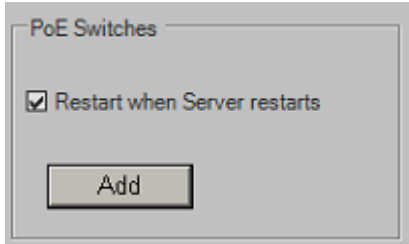
i3 International Inc.
780 Birchmount Rd,
Unit 16, Toronto, ON,
M1K 5H4

USA

i3 America (Nevada) Inc.
4450 Witmer Industrial
Estates, Unit 4, Niagara
Falls, NY 14305

To synchronize your Cortex switch restart time with SRX-Pro restart time, follow instructions below.

1. Go to the SRX-Pro Setup > System tab.
2. Enable **Restart when Server restarts** checkbox.



3. Click **Add**
4. In the PoE Switches List click **Add** and enter the IP Address, Username and Password of your Cortex switch. (Cortex default login/password: **i3admin/i3admin**). Then click **OK**.



5. Click the Save button.

**CONTACT**

www.i3international.com
Toll free: 1.866.840.0004
Tel: 416.261.2266
Fax: 416.759.7776

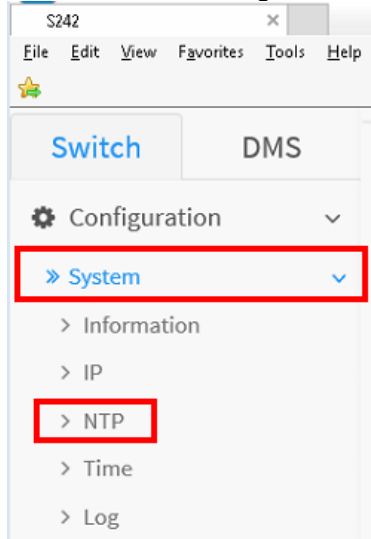
CANADA

i3 International Inc.
780 Birchmount Rd,
Unit 16, Toronto, ON,
M1K 5H4

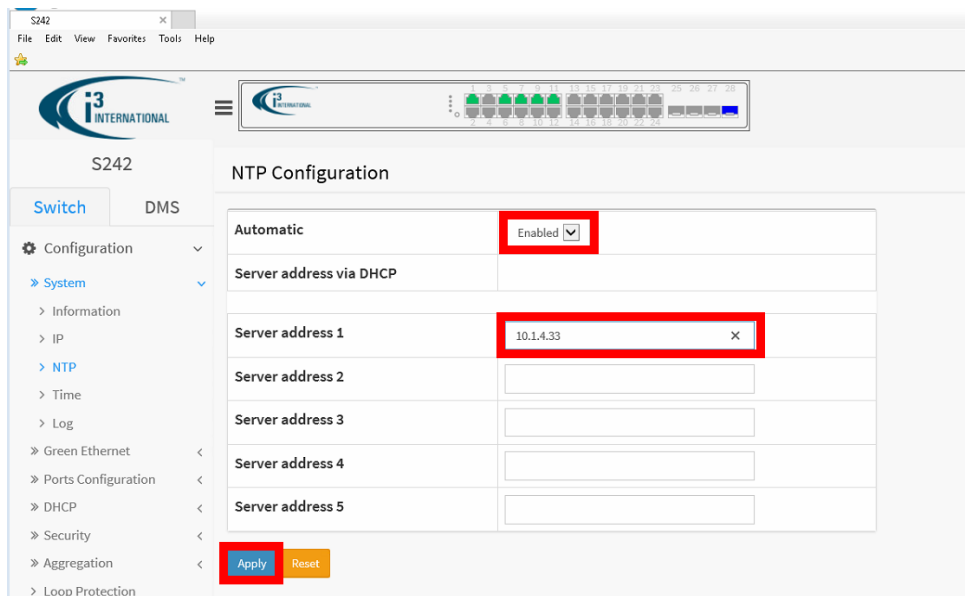
USA

i3 America (Nevada) Inc.
4450 Witmer Industrial
Estates, Unit 4, Niagara
Falls, NY 14305

- In the Internet Browser, enter your Cortex switch IP address and login (Cortex default login/password: **i3admin/i3admin**).
- Go to Switch > Configuration > System > NTP setup tab



- In the NTP Configuration screen, select **Enabled** in the **Automatic** drop-down menu.
- Enter SRX-Pro Server IP address in the Server address 1 field.
- Click **Apply**.



Please contact technical support if you have any questions or issues.

Email: support@i3international.com

Tel.: 1.877.877.7241

Live Chat: <http://i3chat.i3international.com/chat>

CONTACT

www.i3international.com
Toll free: 1.866.840.0004
Tel: 416.261.2266
Fax: 416.759.7776

CANADA

i3 International Inc.
780 Birchmount Rd,
Unit 16, Toronto, ON,
M1K 5H4

USA

i3 America (Nevada) Inc.
4450 Witmer Industrial
Estates, Unit 4, Niagara
Falls, NY 14305