

Re: Integrating your LDAP user groups with your SRX-Pro Server

To all of our customers and partners;

For the security of your system, i3 International highly recommends utilizing LDAP user management in the installations where multiple users have access to the SRX-Pro Server/Service application. LDAP user profile groups are linked to the SRX-Pro user groups for easy and efficient SRX-Pro permissions control.

LDAP integration with SRX-Pro Server adapts your company’s currently implemented user policies including password changing frequency. By utilizing LDAP integration, individual user accounts are added, removed and modified at the LDAP level without having to log into the SRX-Pro setup, so long as the user belongs to the existing LDAP security group linked to one of the SRX-Pro user groups. By integrating your company’s LDAP with your SRX-Pro Server, you can ensure that when a former employee’s account is disabled by the IT administrator in LDAP, their access to the SRX-Pro Server/Service is also revoked.

This bulletin outlines the step-by-step process of integrating your LDAP user groups with your SRX-Pro Server/Service.

Requirements:

- LDAP-enabled server
- Users, Groups and Organization created in LDAP
- Clients that are able to bind to the LDAP server
- Direct Connectivity to the LDAP server

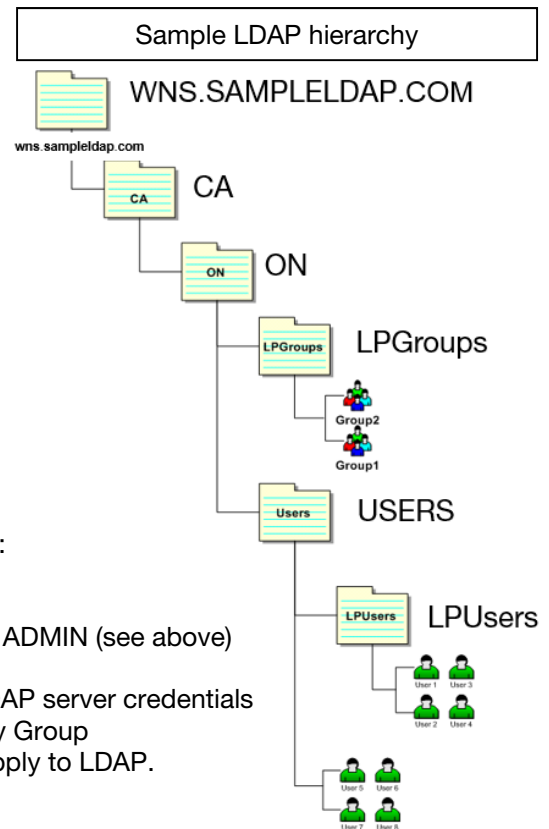
i3-Recommended User Access Levels:

- **USER** – Live video, Search, PTZ control and Panic **ONLY**
- **MANAGER** – User permissions + PAC and video Backup
- **SYSTEM ADMIN/INTEGRATOR** – Complete permissions

General Instructions:

To integrate your LDAP user groups with SRX-Pro Server you will need to:

1. Create Security Groups on the LDAP host server.
i3 recommends creating at least 3 user levels: USER, MANAGER and ADMIN (see above)
2. In SRX-Pro User Management tab, create corresponding user groups
3. In SRX-Pro User Management tab, enable LDAP by filling out your LDAP server credentials
4. Link each SRX-Pro User Group with the corresponding LDAP Security Group
5. Configure SRX-Pro permissions for each SRX-Pro User Group and Apply to LDAP.



CONTACT

www.i3international.com
Toll free: 1.866.840.0004
Tel: 416.261.2266
Fax: 416.759.7776

CANADA

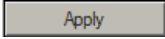
i3 International Inc.
780 Birchmount Rd,
Unit 16, Toronto, ON,
M1K 5H4

USA

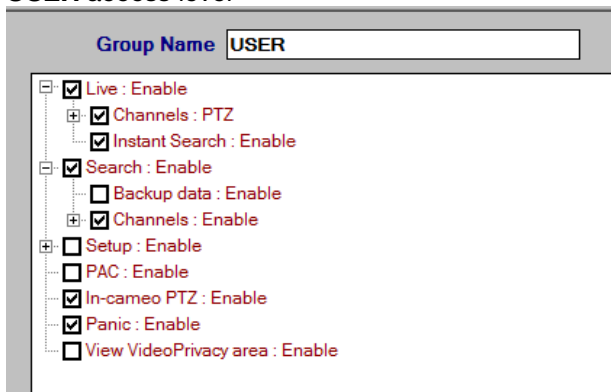
i3 America (Nevada) Inc.
4450 Witmer Industrial
Estates, Unit 4, Niagara
Falls, NY 14305

Step-by-step Instructions:

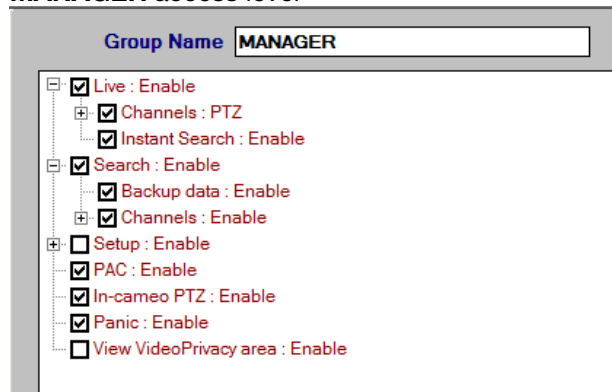
To integrate your LDAP user groups with SRX-Pro Server you will need to:

1. Create Profile (security) groups on the LDAP host server.
i3 recommends creating at least 3 user levels: USER, MANAGER and ADMINISTRATOR. See above for i3-recommended permissions for each LDAP security group.
2. Log into SRX-Pro Server or SRX-Pro Service Monitor as “i3admin” or another administrator user with complete permissions.
3. Go to SRX-Pro Server/Console **Setup > User Management**
4. Click **Add Group**
5. Enter custom Group Name, configure group permissions and click **Apply**  to save

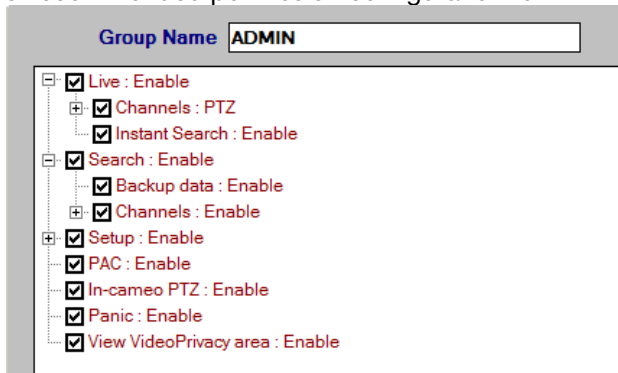
i3-recommended permission configuration for **USER** access level



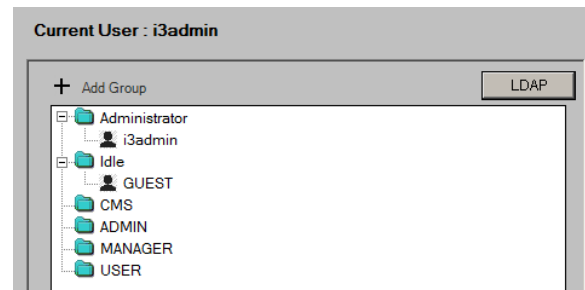
i3-recommended permission configuration for **MANAGER** access level



i3-recommended permission configuration for **ADMIN** access level



6. After new user groups have been configured and added in SRX-Pro User Management tab, the user group list will look similar to this sample.



CONTACT

www.i3international.com
 Toll free: 1.866.840.0004
 Tel: 416.261.2266
 Fax: 416.759.7776

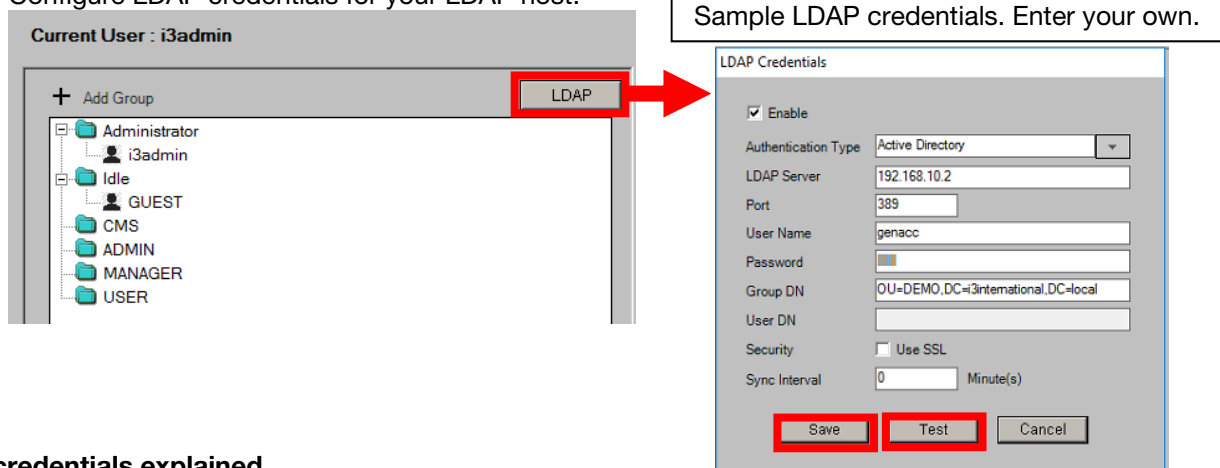
CANADA

i3 International Inc.
 780 Birchmount Rd,
 Unit 16, Toronto, ON,
 M1K 5H4

USA

i3 America (Nevada) Inc.
 4450 Witmer Industrial
 Estates, Unit 4, Niagara
 Falls, NY 14305

7. Click the **LDAP** button. In the LDAP Credentials window, check **Enable**.
8. Configure LDAP credentials for your LDAP host.



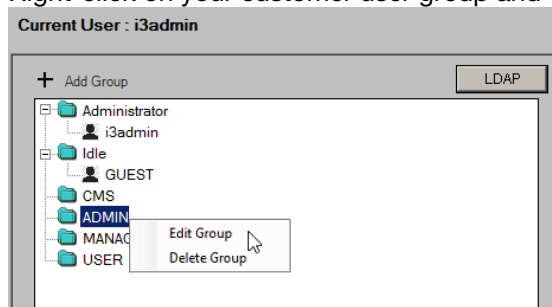
LDAP credentials explained

- **Authentication Type:** Select Active Directory or Open LDAP / Fedora depending on the type of user directory being used on your LDAP host server.
- **LDAP Server:** IP address of the host Server where LDAP resides
- **Port:** Port used by LDAP (389 default or 636)
- **User Name:** Domain user for authentication
- **Password:** Domain user password for authentication
- **Group DN:** Group binding path (used to create the profiles and authenticate against)
- **User DN:** User binding path (use for login into server)
- **Security:** Turn SSL security ON or OFF
- **Sync Interval:** Refresh rate (in minutes) of LDAP groups

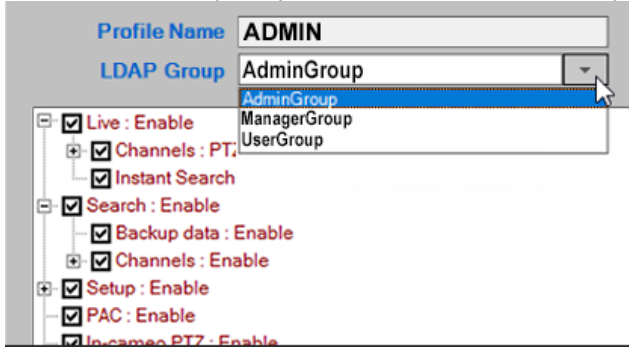
Common definitions:
 OU – Organizational Unit-Name
 DC – Domain Controller
 CN – Common Name
 DN – Distinguish Name (full hierarchical path to the object)
 Three types of Object Classes

- User
- Organizational Unit
- Domain

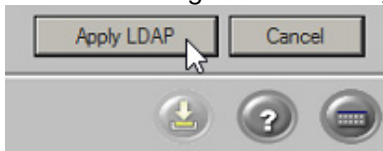
9. After entering LDAP credentials, click the **Test** button. If the test connection has been successful, click **Save**.
10. Right-click on your customer user group and click **Edit Group**.



11. In the LDAP Group drop-down menu, select corresponding LDAP security group



12. In the bottom right-hand corner, click **Apply LDAP** to save settings.



With any pricing questions, kindly contact our Customer Care department at 1.866.840.0004.

Please contact technical support if you have any questions or issues.

Email: support@i3international.com

Tel.: 1.877.877.7241

Live Chat: <http://i3chat.i3international.com/chat>

i3 International Inc.

Technical Support and Services

**Service charge will be waived for i3 International registered dealers.*

CONTACT

www.i3international.com
Toll free: 1.866.840.0004
Tel: 416.261.2266
Fax: 416.759.7776

CANADA

i3 International Inc.
780 Birchmount Rd,
Unit 16, Toronto, ON,
M1K 5H4

USA

i3 America (Nevada) Inc.
4450 Witmer Industrial
Estates, Unit 4, Niagara
Falls, NY 14305