

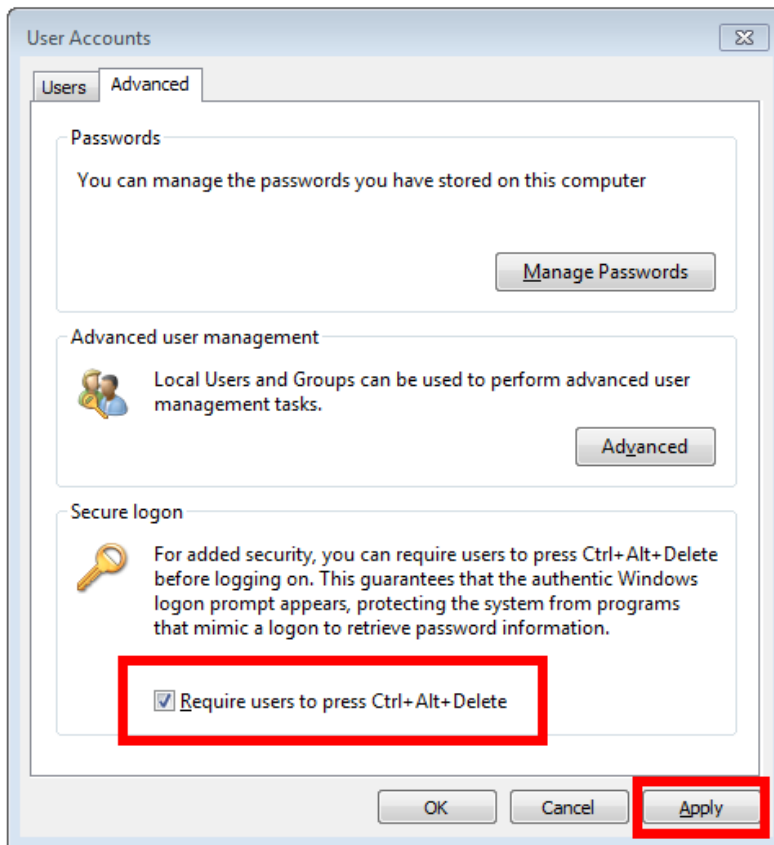
Re: Enabling Secure Logon in Windows 7e.

To all of our customers and partners;

All i3 NVRs are shipped with a secure logon function disabled. System administrators may elect to enable secure logon keystroke combination (Ctrl + Alt + Del) on their NVR.

To enable secure logon option in Windows 7e,

1. Click Start and type **netplwiz.exe** in the Search box and then press **Enter**.
2. Click the Advanced tab.
3. In the **Secure logon** section, enable the **Require users to press Ctrl+Alt+Delete** check box to activate CTRL+ALT+DELETE logon sequence.
4. Click **Apply** to save settings



Please contact technical support if you have any questions or issues.

Email: support@i3international.com

Tel.: 1.877.877.7241

Live Chat: <http://i3chat.i3international.com/chat>

CONTACT

www.i3international.com
Toll free: 1.866.840.0004
Tel: 416.261.2266
Fax: 416.759.7776

CANADA

i3 International Inc.
780 Birchmount Rd,
Unit 16, Toronto, ON,
M1K 5H4

USA

i3 America (Nevada) Inc.
4450 Witmer Industrial
Estates, Unit 4, Niagara
Falls, NY 14305