



Adding a Hard Drive to i³ Rackmount units

Each i³ Rackmount DVR/NVR unit can accept an extra **four** (Intel S1200 motherboard) or **eight** (with additional hardware) hard drives. The extra hard drive installation is easy and does not require opening the unit cover. Please use i³-approved hard drives **only**, see the list below. Using regular hard drives in the DVR/NVR application will cause the system to overheat, system crash may also occur as a result.

REMEMBER:

- Handle hard drives with care
- Do not subject the drive(s) to any physical shock
- Always ground yourself before handling hard drives.
- Static shock on any electronic device may damage any component.

List of i³-approved SATA hard drives:

- WD1003FBYX (Western Digital 1TB RE4)
- WD2003FYYX (Western Digital 2TB RE4)
- I-ST3160318AS (Seagate 160GB Surveillance)
- I-ST3320620AS (Seagate 320GB Surveillance)
- I-ST3320620SV (Seagate 320GB Surveillance)
- I-ST3500630SV (Seagate 500GB Surveillance)
- I-ST3750330SV (Seagate 750GB Surveillance)
- I-ST3750640SV (Seagate 750GB Surveillance)
- I-ST31000340SV (Seagate 1TB Surveillance)
- I-ST31000525SV (Seagate 1TB Surveillance)
- I-ST31000526SV (Seagate 1TB Surveillance)

Parts needed:

i³ approved hard drive(s)
SATA box lock keys
Philips screwdriver

Step 1.



Shut down the DVR/NVR and unplug the power. Open the unit door and locate the SATA hard drive enclosure.

All hard drive bays should be locked. Use the hard drive bay keys shipped with the unit to unlock an empty bay.

Place your thumb on the lower portion of the empty bay and push it downwards, this will make the bay come forward and the upper portion of the bay to elevate.

Step 2.



Firmly hold the top portion of the hard drive bay and pull the bay forward.

Step 3.



The empty hard drive bay will slide out of the SATA enclosure. Remove the bay from the enclosure.

Adding a Hard Drive to i³ Rackmount units

Step 4.



Ground yourself and slide the new hard drive inside the provided hard drive bay as shown on the picture. The hard drive circuitry should remain exposed (see image).

Step 5.



Place the bay with the inserted hard drive flat on a clean, leveled and stable surface.

Locate four (4) small bay screws (shipped separately inside the accessory box).

With the Philips screwdriver screw the hard drive to the hard drive bay as shown on the picture.

Step 6.



Slide the hard drive bay with the new hard drive inside the hard drive bay slot. Push the top portion of the bay into place to lock the bay into the SATA enclosure box.

Use the keys provided (shipped separately inside the accessory box) and lock all bays that contain hard drives.

Repeat all above steps for all additional drives.

Connect the power to the unit and power up the DVR/NVR.

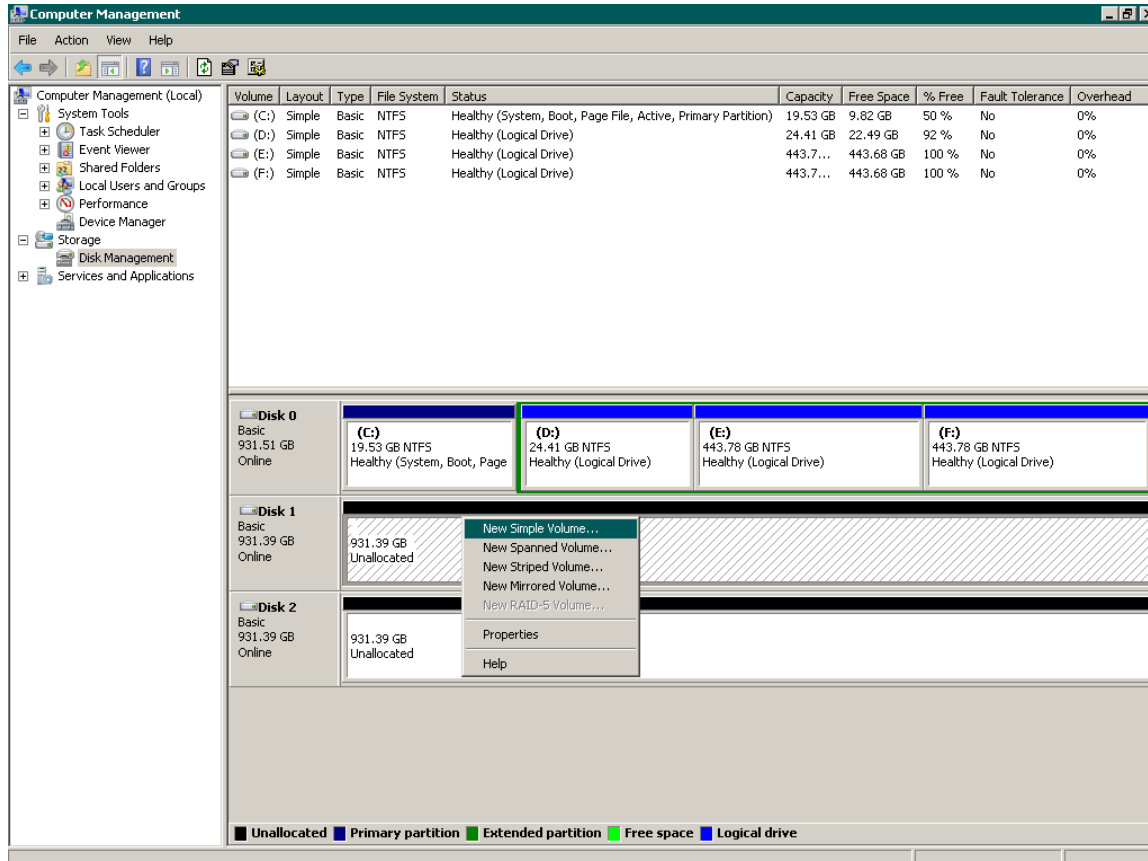
Now that the additional drive has been added to the system, it needs to be partitioned in accordance with i³ standards.

Partitioning a Hard Drive in Windows 7

1. Turn the DVR/NVR ON and wait for the Windows OS and the SRX-Pro Server to load. Then log into the SRX-Pro Server as a master user and press **Alt + Shift + Ctrl + F4** on your keyboard to exit SRX-Pro Server and access the Desktop.
2. Click the START button on the bottom left corner.
3. Right-click on **My Computer** and select **Manage** from the context menu. Computer Management window will be displayed.

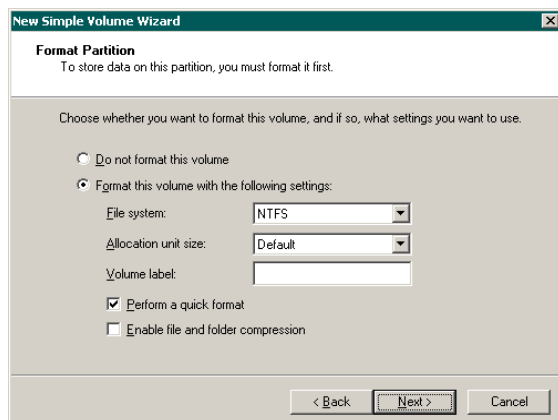
Adding a Hard Drive to i³ Rackmount units

4. In the left pane, select Disk Management. In the right pane, the system physical drives are displayed. The newly installed hard drive will be marked "Unallocated". Please ensure that the unallocated drive is identified as **BASIC**, not *Dynamic**.



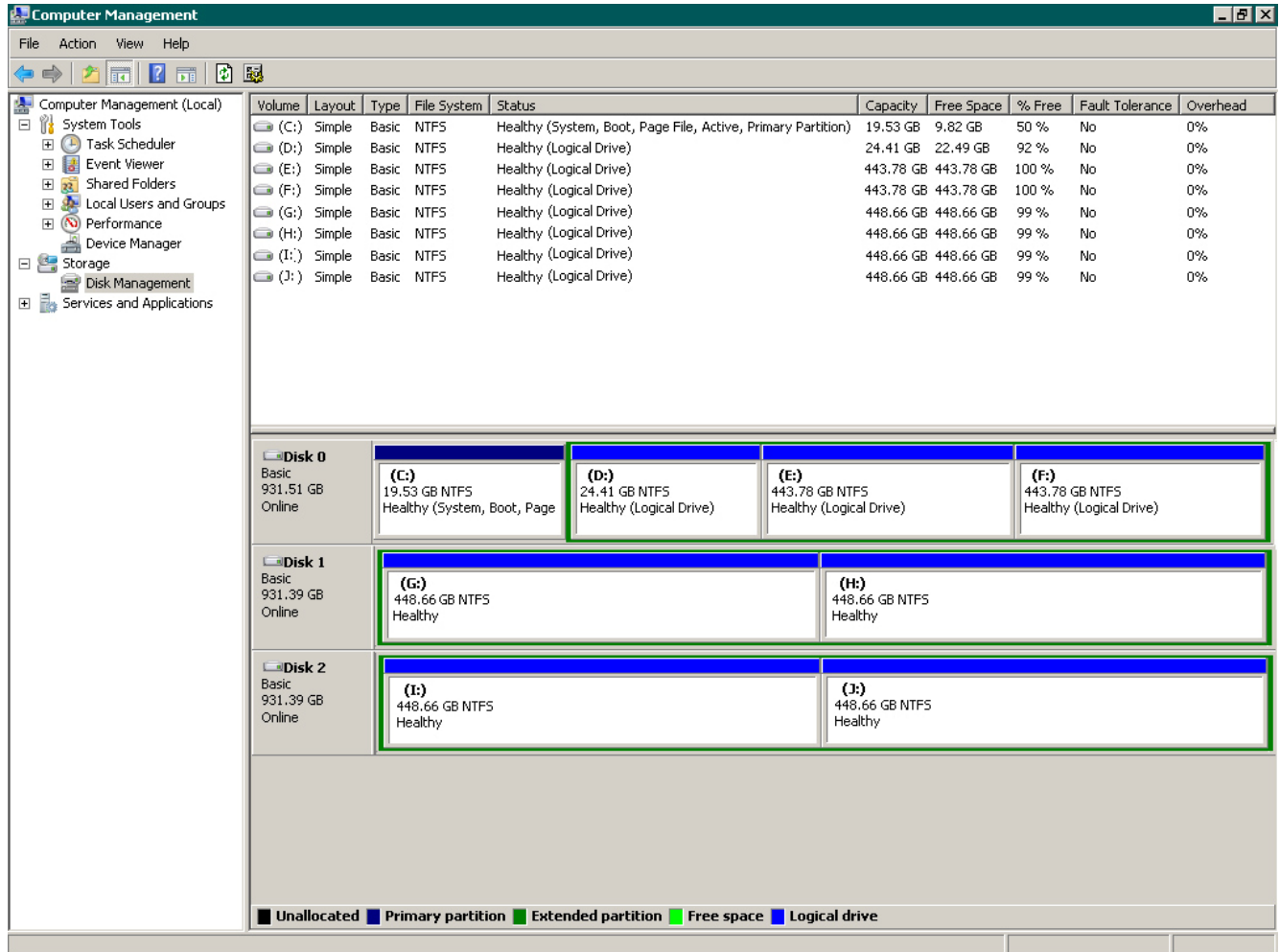
* If the drive is identified as Dynamic, right-click and select Convert to Basic Disk... from the context menu.

5. In the right pane, right-click on the unallocated drive and select **New Simple Volume...** in the context menu. The New Simple Volume Wizard will initialize.
6. Click **Next**.
7. Specify the Volume Size. To calculate the size of the new volume, divide the hard drive's Maximum disk space by two or four, depending on the number of volumes desired. Enter the value in the field **Simple volume size in MB**. Click **Next**.
8. Assign a Drive Letter or Path. Select the desired drive letter in the drop-down list. Click **Next**.



Adding a Hard Drive to i³ Rackmount units

9. The wizard will now prompt you to format the partition. Ensure that **Format this volume with the following settings:** is checked. **The File system:** drop-down should read **NTFS**, and the **Allocation unit size:** should have **Default** selected. **Volume label** is optional. Click **Next** to continue.
10. The wizard now displays a summary of all the configured settings. Click **Finish** to confirm the settings and finish the New Simple Volume Wizard.
11. Repeat steps 5-10 until new drive has been partitioned into 2 or 4 equal partitions, depending on user preference. The drive letters of all partitions should form an uninterrupted sequence (i.e. G,H,I,J). See image below.



This completes the new hard drive configuration. Restart SRX-Pro Server, go to Setup -> Storage Setup and allocate all new partitions for video recording.

Please contact technical support at support@i3international.com or by phone: 1.877.877.7241 if you have any questions or issues.

i³ International Inc.
 Technical Support and Services
 1.877.877.7241
support@i3international.com