

## Adding a Hard Drive to i<sup>3</sup> Rackmount units

Each i<sup>3</sup> Rackmount DVR unit can accept an extra **four** (Intel DH55HC motherboard) or **eight** (with additional hardware) hard drives. The extra hard drive installation is easy and does not require opening the unit cover. Please use i<sup>3</sup> approved hard drives **only**. All additional hard drives used with i<sup>3</sup> units must be Seagate SATA, DVR Surveillance edition hard drives. Using regular hard drives in the DVR application will cause the system to overheat, system crash may also occur as a result.

### REMEMBER:

- Handle hard drives with care
- Do not subject the drive(s) to any physical shock
- Always ground yourself before handling hard drives.

List of i<sup>3</sup>-approved SATA hard drives:

- |  |  |
|--|--|
| • I-ST380815AS (Seagate 80GB Surveillance)   | • I-ST3750330SV (Seagate 750GB Surveillance) |
| • I-ST3320620AS (Seagate 320GB Surveillance) | • I-ST3750640SV (Seagate 750GB Surveillance) |
| • I-ST3320620SV (Seagate 320GB Surveillance) | • I-ST31000340SV (Seagate 1TB Surveillance)  |
| • I-ST3500630SV (Seagate 500GB Surveillance) | • I-ST31000525SV (Seagate 1TB Surveillance)  |

### Parts needed:

i<sup>3</sup> approved SATA Seagate hard drive(s) (DVR Surveillance edition)  
Philips screwdriver

### Step 1.



Shut down the DVR and unplug the power. Open the unit door and locate the SATA hard drive enclosure.

### Step 2.



Firmly hold the top portion of the hard drive bay and pull the bay forward.

### Step 3.



The empty hard drive bay will slide out of the SATA enclosure. Remove the bay from the enclosure.

All hard drive bays should be locked. Use the hard drive bay keys shipped with the unit to unlock an empty bay.

Place your thumb on the lower portion of the empty bay and push it downwards, this will make the bay come forward and the upper portion of the bay to elevate.

## Adding a Hard Drive to i<sup>3</sup> Rackmount units

### Step 4.



**Ground yourself** and slide the new hard drive inside the provided hard drive bay as shown on the picture. The hard drive circuitry should remain exposed (see image).

### Step 5.

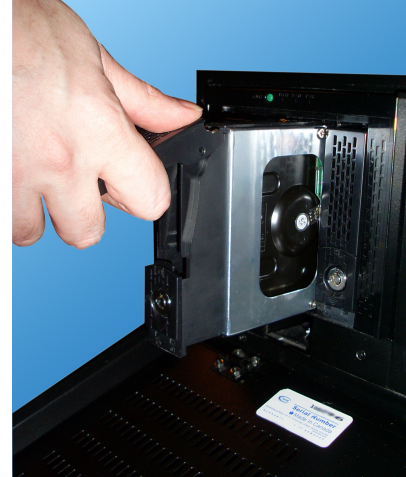


Place the bay with the inserted hard drive flat on a clean, leveled and stable surface.

Locate four (4) small bay screws (shipped separately inside the accessory box).

With the Philips screwdriver screw the hard drive to the hard drive bay as shown on the picture.

### Step 6.



Slide the hard drive bay with the new hard drive inside the hard drive bay slot. Push the top portion of the bay into place to lock the bay into the SATA enclosure box.

Use the keys provided (shipped separately inside the accessory box) and lock all bays that contain hard drives.

Repeat all above steps for all additional drives.

Connect the power to the unit and power up the DVR.

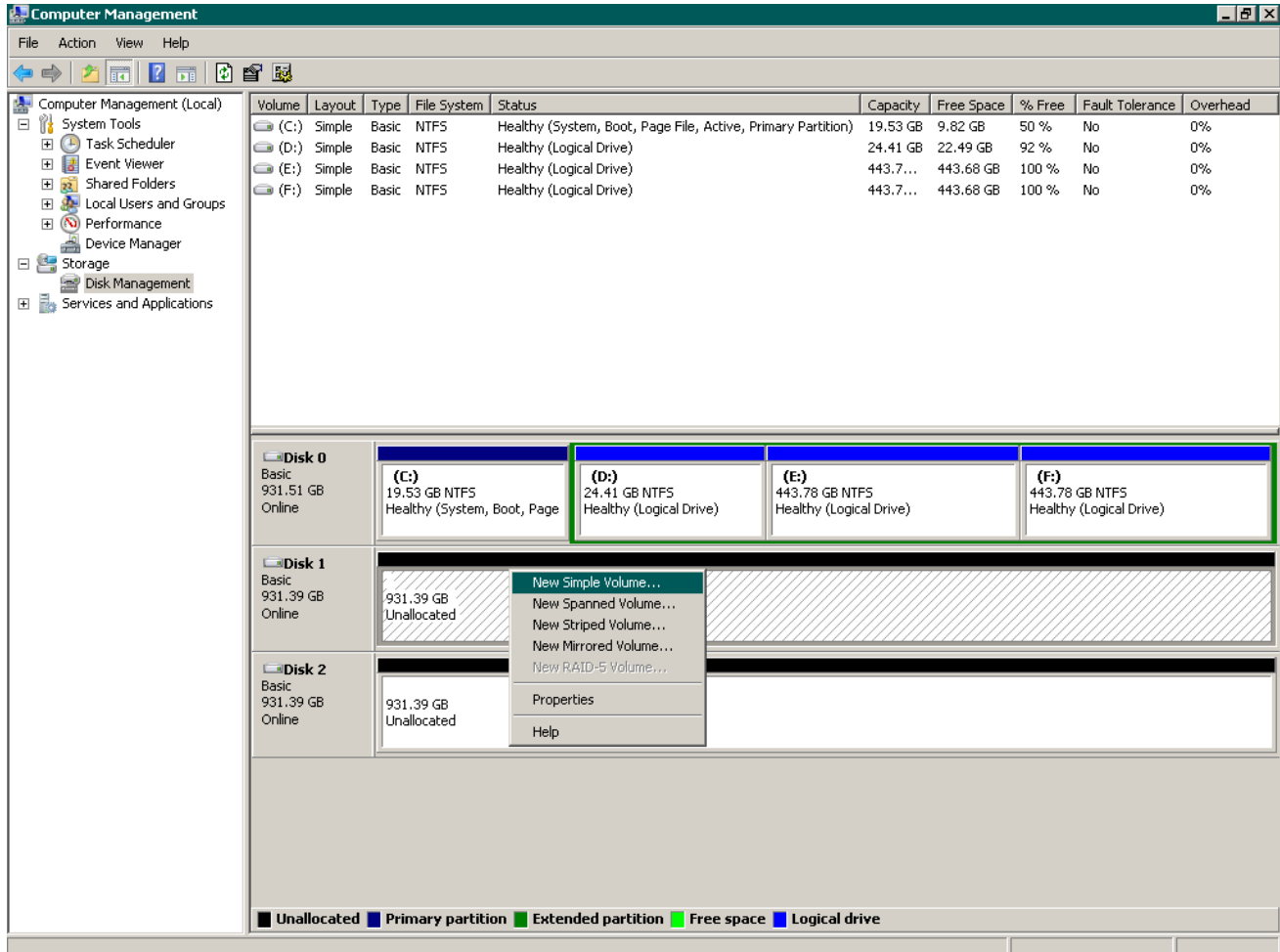
Now that the additional drive has been added to the system, it needs to be partitioned in accordance with i<sup>3</sup> standards.

### Partitioning a Hard Drive in Windows 7

During the DVR booting stage, enter the BIOS setup by pressing F2 on your keyboard.

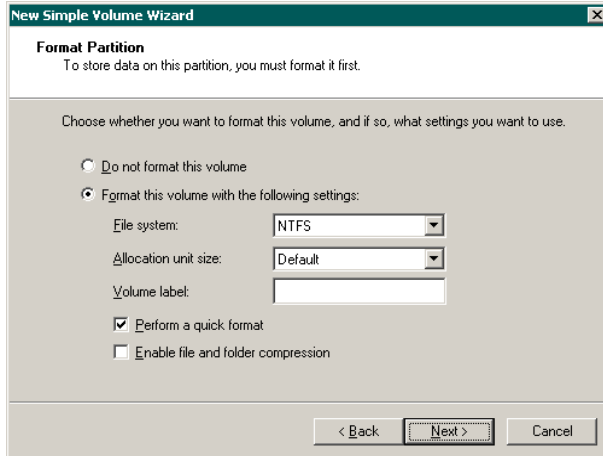
1. In the BIOS setup, go to Advance -> Drive Configuration. Set ATA/IDE Mode to NATIVE, then press **F10** and **Y** key to save settings and exit BIOS.
2. Wait for the Windows OS and the SRX-Pro Server to load. Then log into the SRX-Pro Server as a master user and press **Alt + Shift + Ctrl + F4** on your keyboard to exit SRX-Pro Server and access the Desktop.
3. Click the START button on the Desktop

4. Right-click on **My Computer** and select **Manage** from the context menu. Computer Management window will be displayed.
5. In the left pane, select Disk Management. In the right pane, the system physical drives are displayed. The newly installed hard drive will be marked "Unallocated". Please ensure that the unallocated drive is identified as **BASIC**, not *Dynamic*\*.

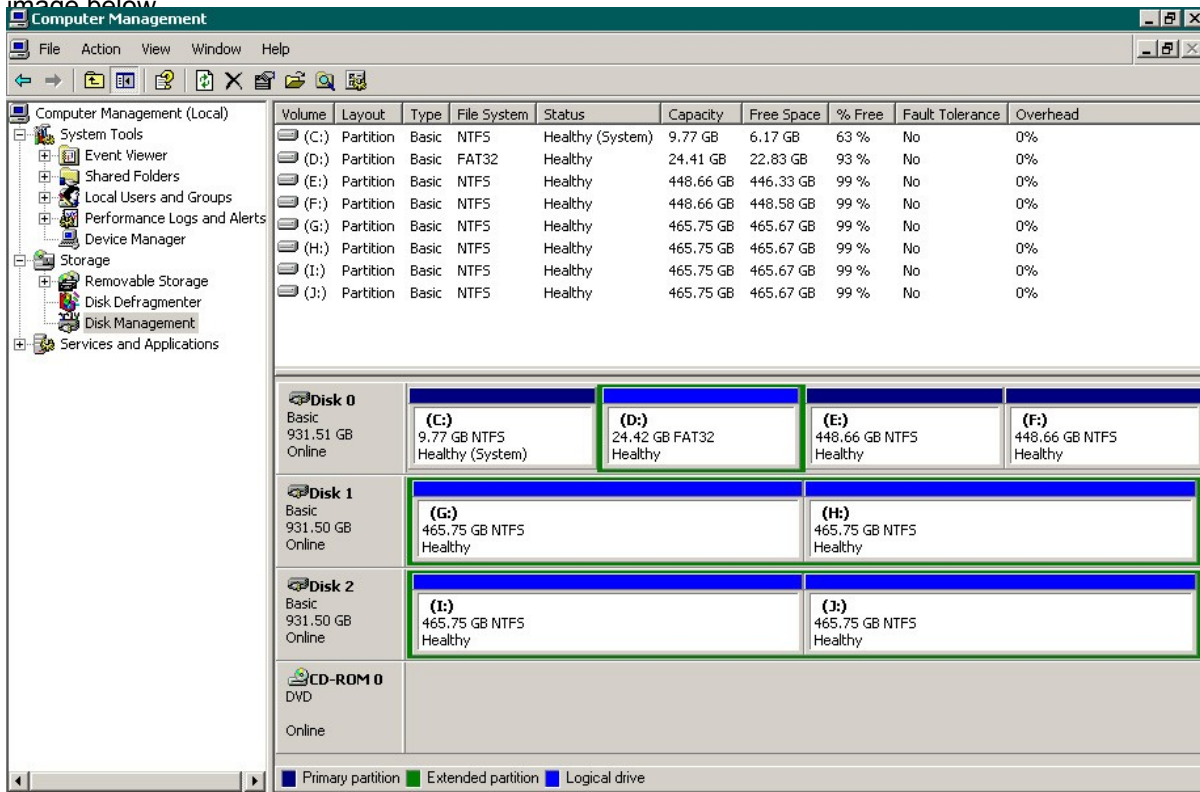


\* If the drive is identified as Dynamic, right-click and select Convert to Basic Disk... from the context menu.

6. In the right pane, right-click on the unallocated drive and select **New Simple Volume...** in the context menu. The New Simple Volume Wizard will initialize.
7. Click **Next**.
8. Specify the Volume Size. To calculate the size of the new volume, divide the hard drive's Maximum disk space by two or four, depending on the number of volumes desired. Enter the value in the field **Simple volume size in MB**. Click **Next**.
9. Assign a Drive Letter or Path. Select the desired drive letter in the drop-down list. Click **Next**.



10. The wizard will now prompt you to format the partition. Ensure that **Format this volume with the following settings:** is checked. The **File system:** drop-down should read **NTFS**, and the **Allocation unit size:** should have **Default** selected. A **Volume label** may be entered. Click **Next** to continue.
11. The wizard now displays a summary of all the configured settings. Click **Finish** to confirm the settings and finish the New Simple Volume Wizard.
12. Repeat steps 6-11 until new drive has been partitioned into 2 or 4 equal partitions, depending on user preference. The drive letters of all partitions should form an uninterrupted sequence (i.e. G,H,I,J). See image below.
13. Repeat steps 11-14 until new drive has been partitioned into 2 or 4 equal partitions, depending on user preference. The drive letters of all partitions should form an uninterrupted sequence (i.e. G,H,I,J). See image below.



This completes the new hard drive configuration. Restart SRX-Pro Server, go to Setup -> Storage Setup and allocate all new partitions for video recording.



## Adding a Hard Drive to i<sup>3</sup> Rackmount units

Please contact technical support at [support@i3international.com](mailto:support@i3international.com) or by phone: 1.877.877.7241 if you have any other questions or issues.

Thank you very much for your attention and cooperation.

Best regards,

i<sup>3</sup> International Inc.  
Technical Support and Services  
1.877.877.7241  
[support@i3international.com](mailto:support@i3international.com)