

## Adding a Hard Drive to i<sup>3</sup> Compact Wallmount units

Most standard i<sup>3</sup> Compact DVR units (except Pro Lite units) can accept two extra storage hard drives without having to open the unit cover. Please use i<sup>3</sup> International approved hard drives **only**. All additional hard drives used with i<sup>3</sup> units must be Seagate SATA, DVR Surveillance edition hard drives. Using regular hard drives in the DVR application will cause the system to overheat, system crash may also occur as a result.

### REMEMBER:

- Handle hard drives with care
- Do not subject the drive(s) to any physical shock
- Always ground yourself before handling hard drives.

List of i<sup>3</sup>-approved SATA hard drives:

- I-ST380815AS (Seagate 80GB Surveillance)
- I-ST3320620AS (Seagate 320GB Surveillance)
- I-ST3320620SV (Seagate 320GB Surveillance)
- I-ST3500630SV (Seagate 500GB Surveillance)
- I-ST3750330SV (Seagate 750GB Surveillance)
- I-ST3750640SV (Seagate 750GB Surveillance)
- I-ST31000340SV (Seagate 1TB Surveillance)
- I-ST31000525SV (Seagate 1TB Surveillance)

### Parts needed:

1 or 2 i<sup>3</sup> approved SATA Seagate hard drive(s) (DVR Surveillance edition)  
Grounding wrist bracelet

### Step 1.



Shut down the DVR, unplug the power.

### Step 2.



Switch the power switch on the Power Supply to the OFF position.

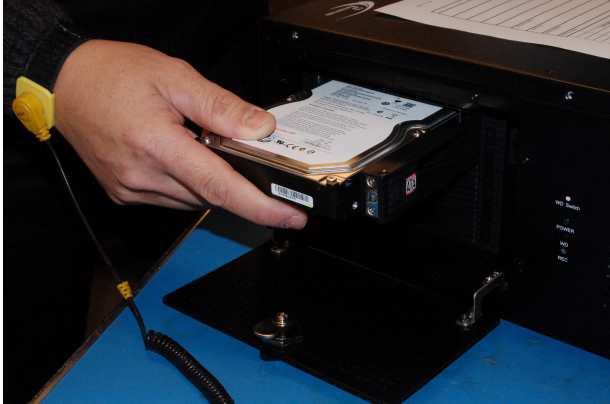
### Step 3.

Open the unit door and locate the hard drive bay. All three hard drive slots should be locked. This is indicated by the red dot on each respective HDD slot.

The system OS drive is **always** on the bottom. **Never** attempt to remove the OS drive, while the unit is running.



## Step 4.



Use the plastic key included in your accessories box or a pointed object, such as a screwdriver or a pen to unlock one of the top two hard drive bays. Push the sliding tab to the bottom, covering the red dot. The bay will be unlocked.

With your finger, lift the hard drive bay tab until the hard drive bay pops open and the door swings out and to the right.

**Ground yourself. Do not handle hard drives without wearing the antistatic wrist strap. Static electricity may damage the unit and/or the new hard drive. Any such damage through user negligence is not covered by the unit warranty.**

Position the new hard drive face up and with the connectors facing away from you and to the inside of the DVR unit.

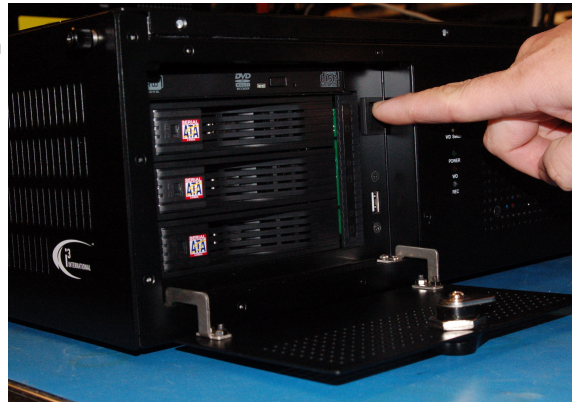
Carefully but firmly slide the new hard drive all the way inside the unit and close the hard drive bay door.

Use the provided plastic key or a pointed object to re-lock the hard drive bay by sliding the tab to the top exposing the red dot.

## Step 5.

Connect the power to the unit and return the power switch on the back of the power supply back into the ON position.

If the unit does not power ON automatically, use the power switch on the front of the unit to power the unit ON.



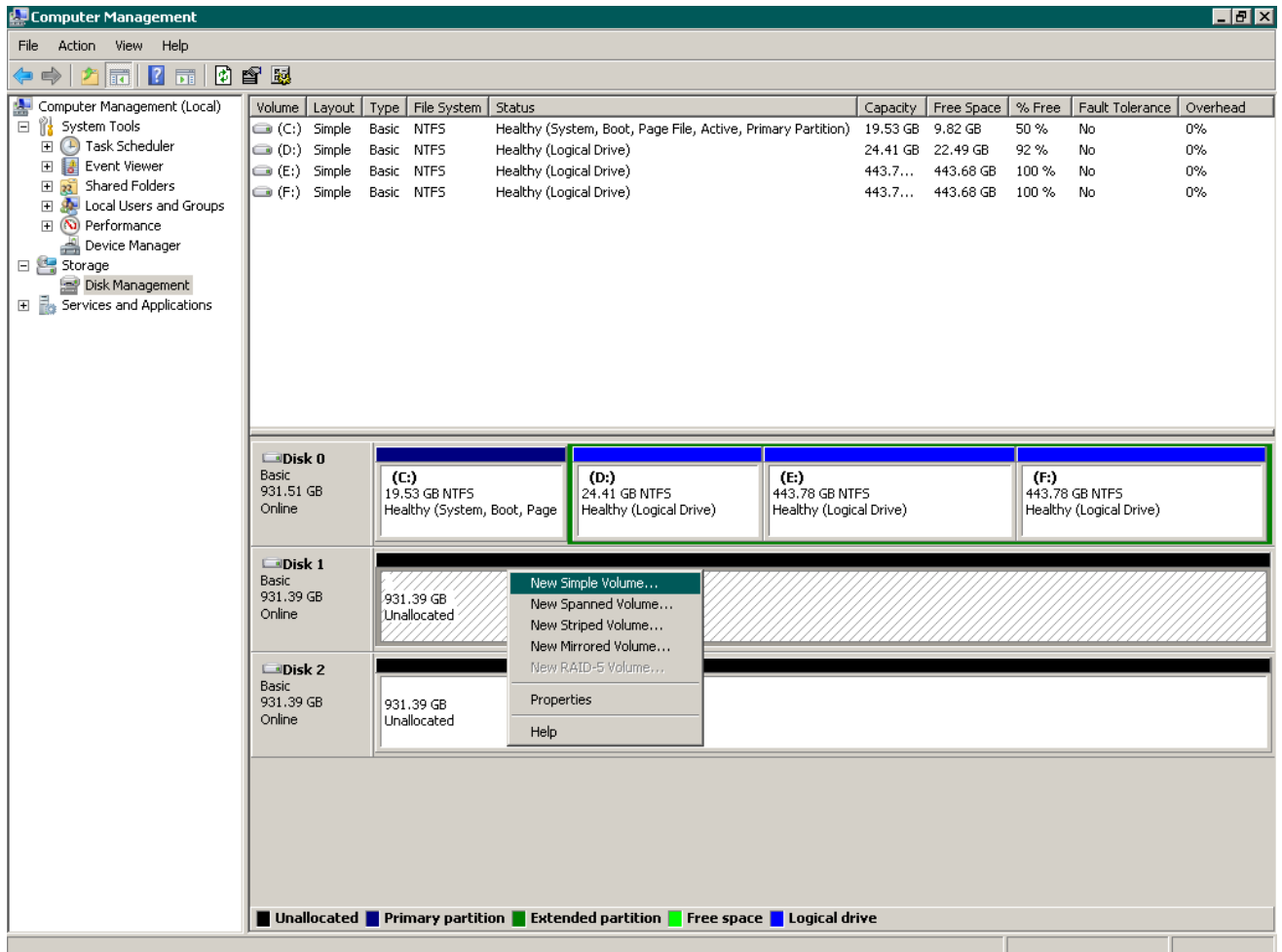
Now that the additional drive has been added to the system, it needs to be partitioned in accordance with i<sup>3</sup> standards.

## Partitioning a Hard Drive in Windows 7

During the DVR booting stage, enter the BIOS setup by pressing F2 on your keyboard.

1. In the BIOS setup, go to Advance -> Drive Configuration. Set ATA/IDE Mode to NATIVE, then press **F10** and **Y** key to save settings and exit BIOS.
2. Wait for the Windows OS and the SRX-Pro Server to load. Then log into the SRX-Pro Server as a master user and press **Alt + Shift + Ctrl + F4** on your keyboard to exit SRX-Pro Server and access the Desktop.
3. Click the **START** button on the Desktop

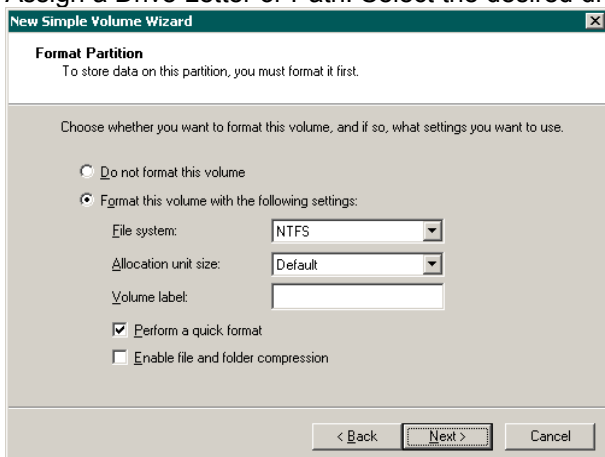
4. Right-click on **My Computer** and select **Manage** from the context menu. Computer Management window will be displayed.
5. In the left pane, select Disk Management. In the right pane, the system physical drives are displayed. The newly installed hard drive will be marked “Unallocated”. Please ensure that the unallocated drive is identified as **BASIC**, not **Dynamic**\*.



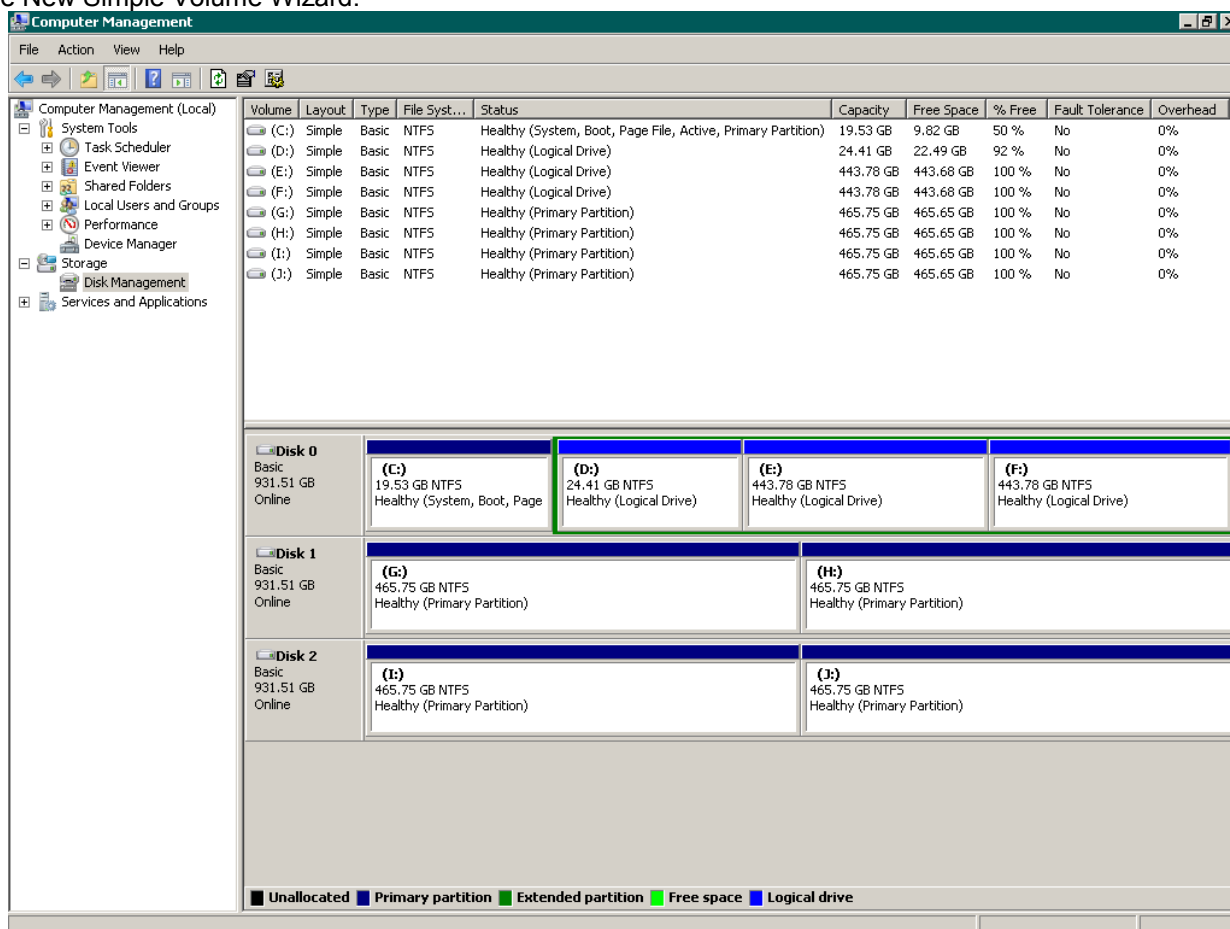
\* If the drive is identified as Dynamic, right-click and select Convert to Basic Disk... from the context menu.

6. In the right pane, right-click on the unallocated drive and select **New Simple Volume...** in the context menu. The New Simple Volume Wizard will initialize.
7. Click **Next**.
8. Specify the Volume Size. To calculate the size of the new volume, divide the hard drive's Maximum disk space by two or four, depending on the number of volumes desired. Enter the value in the field **Simple volume size in MB**. Click **Next**.

- Assign a Drive Letter or Path. Select the desired drive letter in the drop-down list. Click **Next**.



- The wizard will now prompt you to format the partition. Ensure that **Format this volume with the following settings:** is checked. The **File system:** drop-down should read **NTFS**, and the **Allocation unit size:** should have **Default** selected. A **Volume label** may be entered. Click **Next** to continue.
- The wizard now displays a summary of all the configured settings. Click **Finish** to confirm the settings and finish the New Simple Volume Wizard.



- Repeat steps 6-11 until new drive has been partitioned into 2 or 4 equal partitions, depending on user preference. The drive letters of all partitions should form an uninterrupted sequence (i.e. G,H,I,J). See image below.



## Adding a Hard Drive to i<sup>3</sup> Compact Wallmount units

This completes the new hard drive configuration. Restart SRX-Pro Server, go to Setup -> Storage Setup and allocate all new partitions for video recording.

Please contact technical support at [support@i3international.com](mailto:support@i3international.com) or by phone: 1.877.877.7241 if you have any questions or issues.

i<sup>3</sup> International Inc.  
Technical Support and Services  
1.877.877.7241  
[support@i3international.com](mailto:support@i3international.com)