

**Re: Messoas SDS700-series Vandal Dome SRX-Pro Integration**

To all of our customers and partners;

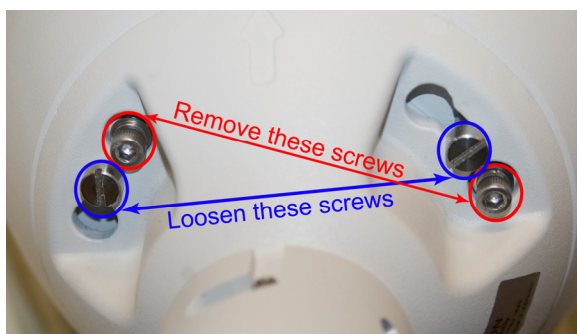
i<sup>3</sup>DVR is proud to introduce a new vandal resistant dome camera to the Messoas product line: SDS700-series. These vandal resistant speed dome cameras are IP67 waterproof and, depending on a dome model, boast an impressive 36x optical zoom.

To configure your Messoas SDS700-series dome with the SRX-Pro Server software, follow the steps below:

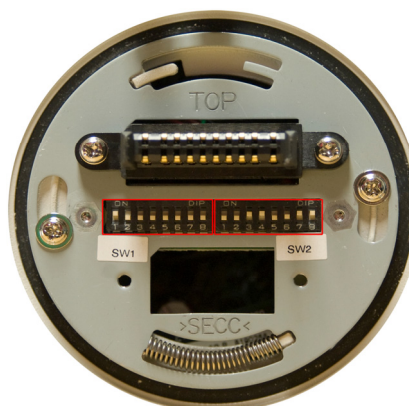


Picture 1. Messoas SDS700-series Vandal Dome Camera

1. Use the Allen key tool to remove three screws from the top of the camera dome (Picture 2).
2. Use the flat screwdriver to loosen the other three screws on the top of the camera dome (Picture 2).
3. Carefully twist the dome in the counterclockwise direction to detach it from the top of the camera assembly. The camera's dipswitches will be exposed (Picture 3).



Picture 2. Partial view of Messoas SDS700-series Vandal Dome from above. 4 out of 6 screws are shown.



Picture 3. Messoas SDS700-series Vandal Dome. Dip switches: SW1 and SW2

4. Use the SW1 dipswitch to configure the camera's address. Memorize the camera's address. Refer to **SW1: Camera address setup** table, pp. 59-60 of the Messoas SDS700-Series Vandal Dome User Guide.pdf document ([www.i3dvr.com/learning](http://www.i3dvr.com/learning)) for more information.
5. Use the SW2 dipswitch to configure the camera's terminal resistance, communication protocol and baud rate. To integrate Messoas SDS700-series Vandal Dome camera with SRX-Pro Server software, set the SW2 dipswitch to the following configuration:

SW2 Pin#	1	2	3	4	5	6	7	8
	OFF	OFF	ON	ON	OFF	OFF	ON	ON

The dipswitch configuration above will turn the camera's terminal resistance OFF, set the camera's protocol to Pelco-D and the baud rate to 2400.

Refer to the **SW2: Communication protocol/Baud rate/Terminal resistance** table, p.60 of the Messoas SDS700-Series Vandal Dome User Guide.pdf document ([www.i3dvr.com/learning](http://www.i3dvr.com/learning)) for more information.

6. Connect Messoa 700-series vandal dome camera to a BNC video input on the i<sup>3</sup> DVR system. Memorize the BNC port number.
7. Connect the camera to RS-485 port on the i<sup>3</sup> DVR system's I/O board.
8. Open SRX-Pro Server Setup and go to Hardware Setup tab.
9. In the Hardware Setup tab, Channel Settings area, enable the desired channel number by checking the corresponding checkbox. In the example below, Messoa vandal dome camera is being assigned to Channel 3.
10. In the corresponding **Cam ID** field, enter the camera address configured by SW1 dipswitch (see Step 4)
11. Enter the camera's **Name** if desired (optional)
12. From the corresponding **Video** drop-down menu, select the **Input** number that corresponds to the BNC port number, where the camera has been connected (see Step 6)
13. From the corresponding PTZ Camera Type drop-down menu, select the **PELCO-D Spec III** protocol

Channel Settings									
<input checked="" type="checkbox"/> All	Cam.ID	Name	Video	Audio	Compression	Quality	PTZ Camera Type	A/P	Dwell
<input checked="" type="checkbox"/>	0	Channel 1	Input 1 ...	NONE ...		80%	NONE ...	<input type="checkbox"/>	30
<input checked="" type="checkbox"/>	0	Channel 2	Input 3 ...	NONE ...		80%	NONE ...	<input type="checkbox"/>	30
<input checked="" type="checkbox"/>	1	Messoa PTZ	Input 3 ...	NONE ...		80%	PELCO-D SpecIII ...	<input type="checkbox"/>	30
<input checked="" type="checkbox"/>	0	Channel 4	Input 4 ...	NONE ...		80%	NONE ...	<input type="checkbox"/>	30
<input checked="" type="checkbox"/>	0	Channel 5	Input 5 ...	NONE ...		80%	NONE ...	<input type="checkbox"/>	30
<input checked="" type="checkbox"/>	0	Channel 6	Input 6 ...	NONE ...		80%	NONE ...	<input type="checkbox"/>	30
<input checked="" type="checkbox"/>	0	Channel 7	Input 7 ...	NONE ...		80%	NONE ...	<input type="checkbox"/>	30



14. Click the **Save** button to save setup configurations
15. Repeat Steps 1-14 for all Messoa 700-series vandal dome cameras

For more information or with any questions please contact technical support at [support@i3dvr.com](mailto:support@i3dvr.com) or by phone: 1.877.877.7241. Thank you very much for your attention and cooperation.

Best regards,



**Bob Hoang**  
 Technical Support and Services  
 1.416.261.2266 x107  
[bob@i3dvr.com](mailto:bob@i3dvr.com)