

April 7, 2009

Re: New i³DVR Capture and I/O boards

To all of our customers and partners;

We would like to announce the upcoming release of our new proprietary PCI-Express Capture board (I3-AD3016) and a USB I/O (I3-WDT22) board.

As the new motherboards move towards PCI-Express technology, which offers substantially faster data transfer rates, we needed to design a new capture board that would be compatible with the provided PCIe motherboard ports.

Frame rate supported by SRX-Pro Lite/Ultra Lite with I3-AD3016 capture card

SRX-Pro Lite	Resolution (NTSC/PAL)	Frame Rate (NTSC/PAL)
	360x240/360x288 (CIF)	120/100 fps
	720x240/720x288 (2CIF)	60/50 fps
SRX-Pro Ultra Lite	Resolution (NTSC/PAL)	Frame Rate (NTSC/PAL)
	360x240/360x288 (CIF)	60/50 fps
	720x240/720x288 (2CIF)	60/50 fps

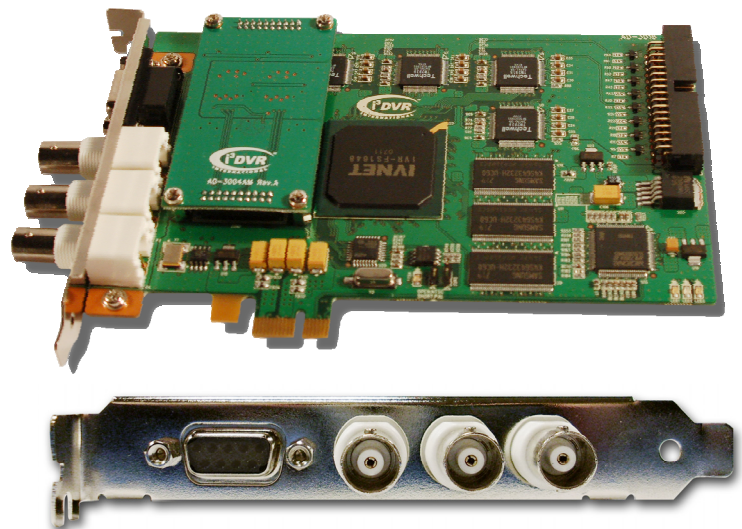


Figure 1. I3-AD3016 capture board.

BNC spot monitor outputs are numbered top-to-bottom (left-to-right in the image): #1 (16-screen-division), #2 and #3 (single screen division, sequencing). **Note:** DB9 port is not in use.

I3-AD3016 specifications:

Connection type: **PCI-Express**

Number of BNC spot monitors supported: **3**

Real-time Display supported: **No**

Maximum frame rate supported: **120/100 fps** (SRX-Pro Lite) and **60/50 fps** (SRX-Pro Ultra Lite)

I3-AD3016 capture board was designed especially for SRX-Pro Lite and Ultra Lite DVR solutions. This board boasts a total of 3 BNC spot monitor connections – a new feature not offered by the traditional AD2016 capture board. First spot monitor output supports a 16-split-screen division mode, while two remaining spot monitor outputs support single screen division, which can be configured to either sequencing or “follow-the-screen” mode.

The new lighter version of the I/O board (I3-WDT22) features 2 input and 2 output connections as well as a single RS-485 port. No spot monitor connectors are offered on the I/O board, the limitation remedied by the new capture board that supports a total of up to 3 spot monitors.

To install the new input/output board only an available expansion card slot is required. The new board utilizes the internal USB connection on the motherboard, which means that PCI/PCIe port is not needed.

Just like the traditional ADIO-1616 I/O board, the new I3-WDT22 board has an internal watchdog function that will restart the DVMS whenever SRX-Pro Server video recording stops abnormally or in the unlikely event that SRX-Pro Server stops responding.

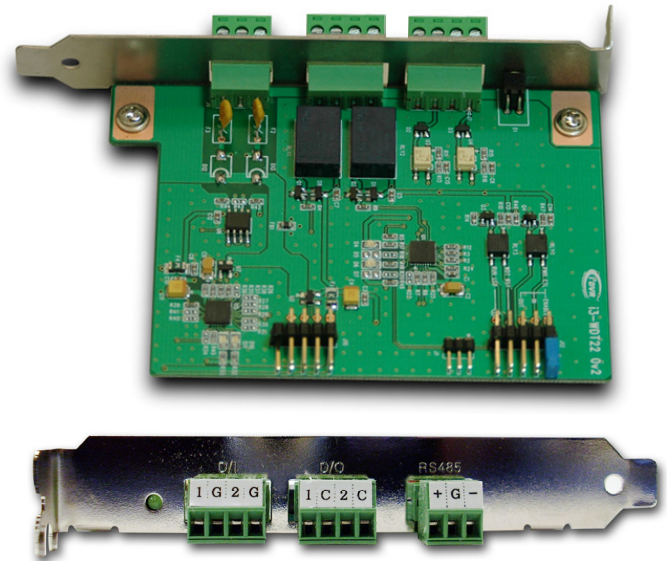


Figure 2. I3-WDT22 I/O board

I3-WDT22 specifications:

Connection type: **internal USB**

Number of inputs/outputs: **2/2**

Number of RS-485 ports: **1 (supports up to 16 PTZ camera connections)**

The new capture and I/O boards are due to be released for production May 15th, 2009. Further official release notes as well as updated hardware/software feature documentation will follow as the production release date approaches.

With any questions, please contact technical support at support@i3dvr.com or by phone: 1.877.877.7241.

Thank you very much for your attention and cooperation.

Best regards,



Bob Hoang
Technical Support and Services
1.416.261.2266 x107
bob@i3dvr.com