

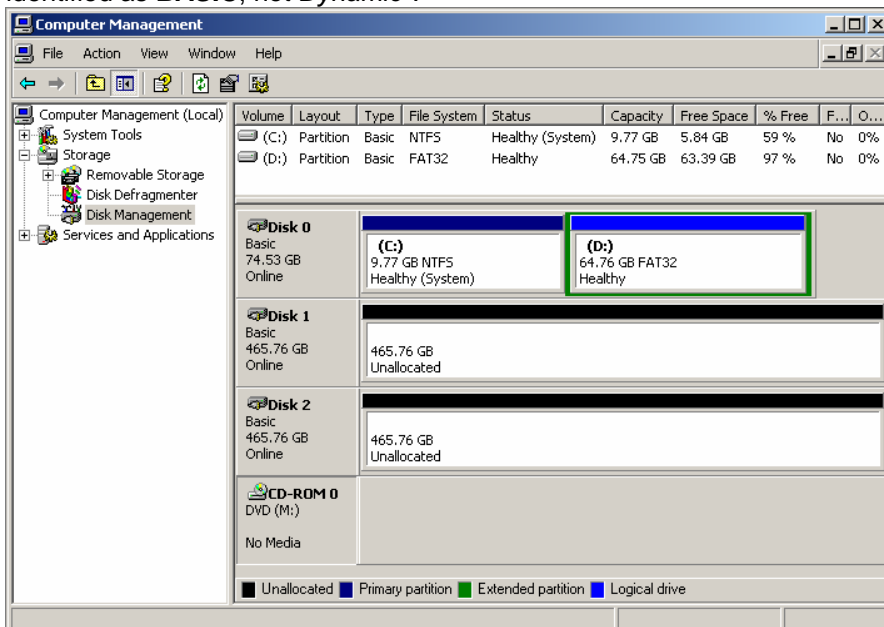
April 22, 2008

Re: Partitioning a Hard Drive in Windows XP Pro and XP Embedded

When a storage hard drive is added or replaced on the i³DVR DVMS unit, it has to be partitioned in accordance with i³DVR standards. To do so, follow the instructions below.

During the DVR booting stage, enter the BIOS setup by **Del** key (ASUS P5LD2) or by pressing F2 on your keyboard (Intel DQ965GF/DP35DP).

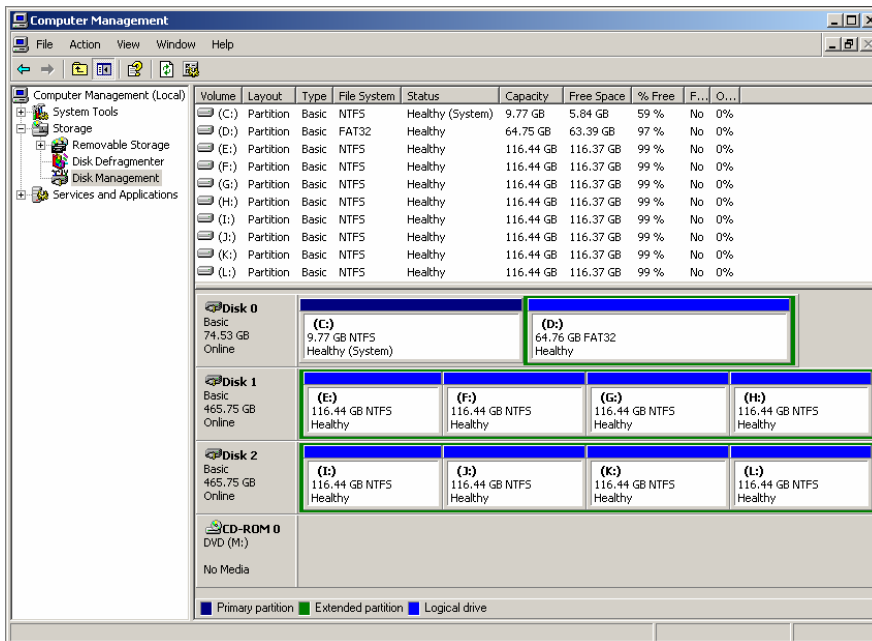
1. For ASUS P5LD2, go to Main Menu -> IDE Configuration. Set Onboard IDE Operate Mode to **ENHANCED MODE**, then press F10 and select OK to save settings and exit BIOS.
For Intel DQ965GF/DP35DP, go to Advance -> Drive Configuration. Set ATA/IDE Mode to NATIVE, then press F10 and Y key to save settings and exit BIOS.
2. **For XP Pro:** Wait for the Windows OS and the SRX-Pro Server to load.
For XP Embedded (Ultra Lite, Pro Lite): During Windows startup process, press and hold **Shift** key to display the Log In window. Log in as administrator – Username: **Administrator**, Password: **Tech Support**. After the login, the Server software will be loaded.
3. Log into the SRX-Pro Server as a master user and press **Alt + Shift + Ctrl + F4** on your keyboard to close Server and access the Desktop.
4. Click the **START** button on the Desktop
5. **For SRX-Pro Regular units (XP Pro):** Right-click on My Computer and select Manage from the context menu. Computer Management window will be displayed.
For SRX-Pro Ultra Lite and Pro Lite (XP Embedded): Go to All Programs -> Management Tools -> Disk Management. Computer Management window will be displayed.
6. In the left pane, select Disk Management. In the right pane, the system physical drives are displayed. The newly installed hard drive will be marked "Unallocated". Please ensure that the unallocated drive is identified as **BASIC**, not *Dynamic**.



* If the drive is identified as Dynamic, right-click and select Convert to Basic Disk... from the context menu.

7. In the right pane, right-click on **CD-ROM 0** drive and select **Change Drive Letter and Paths...** in the context menu.
8. In the new window, click **Change...**
9. In the Change Drive Letter or Path window, select the drive letter **Z** and click **OK**. Click **Yes** in the confirmation window.
10. Right-click on the black bar of the unallocated drive (usually Disk 2) and select **New Partition** from the context menu.

11. In the new window, click **Next**. Select Extended Partition, click **Next** twice. Click **Finish**. The black bar will become green to indicate that the drive was converted to an extended partition.
12. Right-click on the green bar of the new drive and select **New Logical Drive...** from the context menu.
13. Enter the value of **Partition size in MB**.
To calculate the size of each partition, divide new hard drive's total capacity by four.
IMPORTANT: If the total number of storage drives exceeds 4, partition each drive into 2 equal partitions.
For example: $500\text{GB} \div 4 = 119232\text{MB}$
14. Click **Next**. Make sure that the selected drive letter is the first available letter in a sequence. Click **Next** again.
15. In the New Partition Wizard window, erase the **Volume label** and check off the **Perform a quick format checkbox**. Click **Next**. Click **Finish**.
16. Repeat steps 10-15 until new drive has been partitioned into 4 equal partitions. The drive letters of all partitions should form an uninterrupted sequence (i.e. E,F,G,H,I,J,K,L). See image below.



This completes the new hard drive configuration. Restart Server software, go to Setup -> Storage Setup and allocate all new partitions for video recording.

With any questions, please contact our technical support at 1.877.877.7241 or support@i3dvr.com

Thank you very much for your attention and cooperation.

Best regards,



Olga Alexeenko
Training Coordinator
1.416.261.2266 x135
oaalexeenko@i3dvr.com