

Adding a Hard Drive to i³ Rackmount server

Each standard i³ International Rackmount DVR unit can accept an extra **four** hard drives. The extra hard drive installation is easy and does not require opening the unit cover. Please use i³ approved hard drives **only**. All additional hard drives used with i³ units must be Seagate Surveillance SATA edition hard drives. Using regular hard drives in the server application will cause the system to overheat, system crash may also occur as a result, and VOID warranty from i³ International.

REMEMBER:

- Handle hard drives with care
- Do not subject the drive(s) to any physical shock
- Always ground yourself before handling hard drives.

List of i³-approved SATA hard drives:

- I-ST380815AS (Seagate 80GB Surveillance)
- I-ST3500630SV (Seagate 500GB Surveillance)
- I-ST3500410SV (Seagate 500GB Surveillance)
- I-ST31000340SV (Seagate 1TB Surveillance)
- I-ST31000525SV (Seagate 1TB Surveillance)

Parts needed:

i³ approved SATA Seagate hard drive(s) (Surveillance edition)
Philips screwdriver

Step 1.



Shut down the DVR and unplug the power. Open the unit door and locate the SATA hard drive enclosure.

All hard drive bays should be locked. Use the hard drive bay keys shipped with the unit to unlock an empty bay.

Place your thumb on the lower portion of the empty bay and push it downwards, this will make the bay come forward and the upper portion of the bay to elevate.

Step 2.



Firmly hold the top portion of the hard drive bay and pull the bay forward.

Step 3.



The empty hard drive bay will slide out of the SATA enclosure. Remove the bay from the enclosure.

Adding a Hard Drive to i³ Rackmount server

Step 4.



Ground yourself and slide the new hard drive inside the provided hard drive bay as shown on the picture. The hard drive circuitry should remain exposed (see image).

Step 5.



Place the bay with the inserted hard drive flat on a clean, leveled and stable surface.

Locate four (4) small bay screws (shipped separately inside the accessory box).

With the Philips screwdriver screw the hard drive to the hard drive bay as shown on the picture.

Step 6.



Slide the hard drive bay with the new hard drive inside the hard drive bay slot. Push the top portion of the bay into place to lock the bay into the SATA enclosure box.

Use the keys provided (shipped separately inside the accessory box) and lock all bays that contain hard drives.

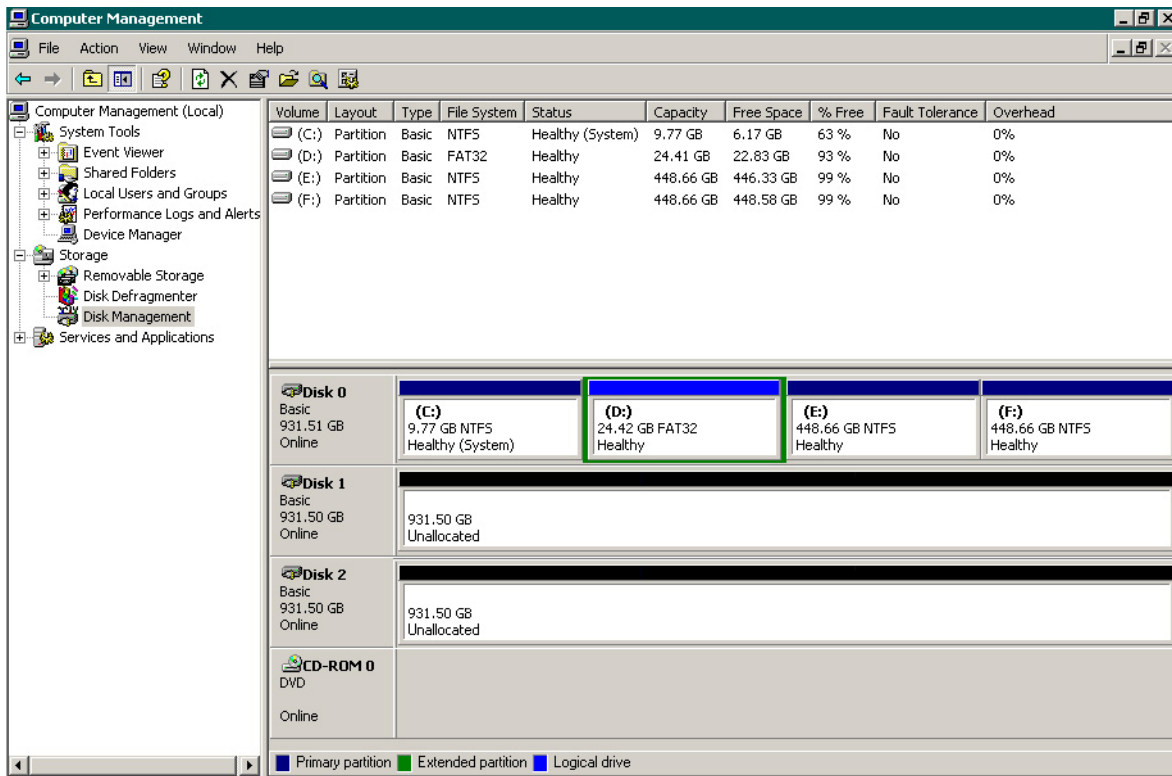
Repeat all above steps for all additional drives.

Connect the power to the unit and power up the DVR.

Now that the additional drive has been added to the system, it needs to be partitioned in accordance with i³ standards.

Partitioning a Hard Drive in XP Embedded

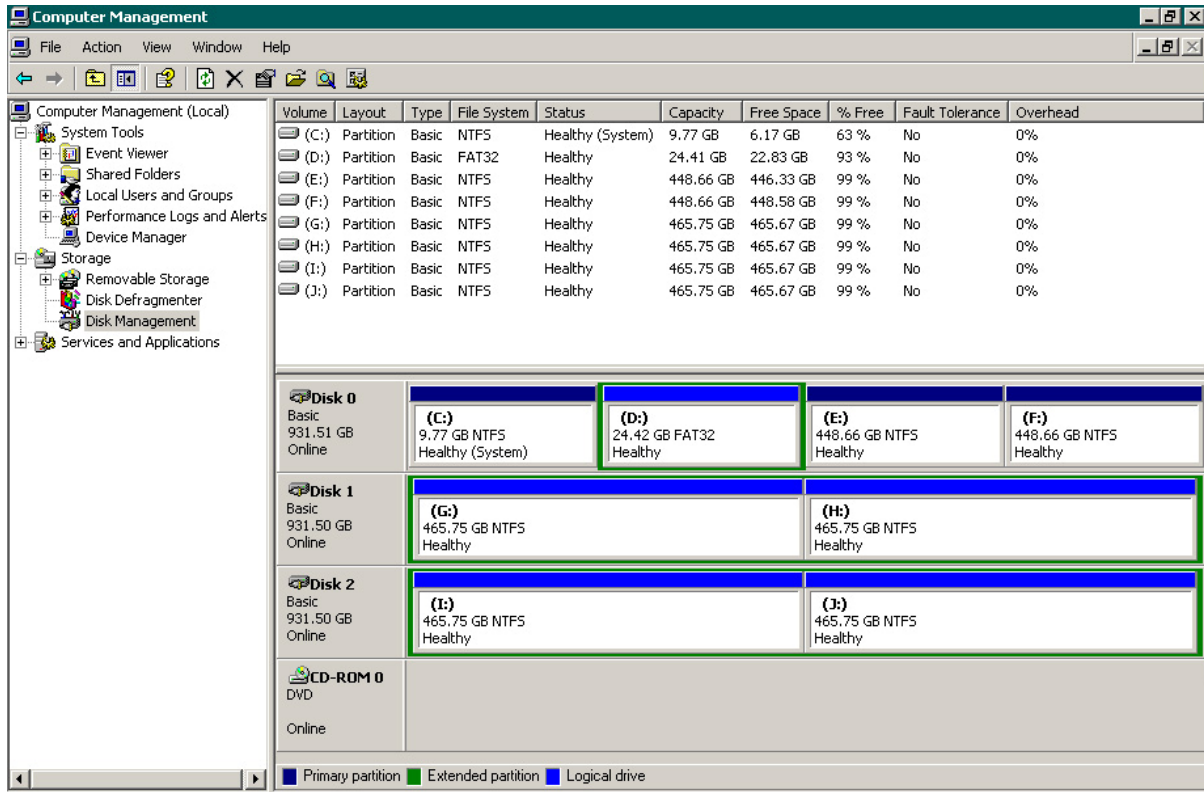
1. Wait for the Windows OS and the SRX-Pro Server to load. Then log into the SRX-Pro Server as a master user and press **Alt + Shift + Ctrl + F4** on your keyboard to exit SRX-Pro Server and access the Desktop.
2. Click the **START** button on the bottom left corner of the screen.
3. Right-click on **My Computer** and select **Manage** from the context menu. Computer Management window will be displayed.
4. In the left pane, select Disk Management. In the right pane, the system physical drives are displayed. The newly installed hard drive will be marked "Unallocated". Please ensure that the unallocated drive is identified as **BASIC**, not *Dynamic**



* If the drive is identified as Dynamic, right-click and select Convert to Basic Disk... from the context menu.

5. In the right pane, right-click on **CD-ROM 0** drive and select **Change Drive Letter and Paths...** in the context menu.
6. In the new window, click **Change...**
7. In the Change Drive Letter or Path window, select the drive letter **M** and click **OK**. Click **Yes** in the confirmation window.
8. Right-click on the black bar of the unallocated drive (usually Disk 1) and select **New Partition** from the context menu.
9. In the new window, click **Next**. Select Extended Partition, click **Next** twice. Click **Finish**. The black bar will become green to indicate that the drive was converted to an extended partition.
10. Right-click on the green bar of the new drive and select **New Logical Drive...** from the context menu.
11. Enter the value of **Partition size in MB**.
To calculate the size of each partition, divide new hard drive's total capacity by two.
12. Click **Next**. Make sure that the selected drive letter is the first available letter in a sequence. Click **Next** again.
13. In the New Partition Wizard window, erase the **Volume label** and check off the **Perform a quick format checkbox**. Click **Next**. Click **Finish**.

- Repeat steps 11-14 until new drive has been partitioned into 2 equal partitions. The drive letters of all partitions should form an uninterrupted sequence (i.e. G,H,I,J). See image below.



This completes the new hard drive configuration. Restart SRX-Pro Server, go to Setup -> Storage Setup and allocate all new partitions for video recording.

Please contact technical support at support@i3dvr.com or by phone: 1.877.877.7241 if you have any other questions or issues.

Thank you very much for your attention and cooperation.

Technical Support and Services