

March 14th, 2008

Re: New i3DVR Capture and I/O boards

To all i3DVR Sales and Customer Care representatives:

The purpose of this bulletin is to inform you about the upcoming release of our new proprietary PCI-Express Capture boards (I3-AD3016/I3-AD3416) and a USB I/O (I3-WDT22) board.

As the new motherboards move towards faster PCI-Express technology, we needed to design a new capture board that would be compatible with the provided PCIe motherboard ports. In addition, we made it our goal to offer a more affordable solution for the users of Ultra Lite and Pro Lite DVMS units.

Frame rate specifications for I3-AD3016/I3-AD3416

NTSC	Resolution**	Frame Rate**
	360x240 (CIF)	240 fps
	720x240 (2CIF)	120 fps
	720x480 (D1)	60 fps
PAL	Resolution**	Frame Rate**
	360x288 (CIF)	200 fps
	720x288 (2CIF)	100 fps
	720x576 (D1)	50 fps

** Note that the frame rate and/or resolution offered by the capture board may not be supported by the SRX-Pro Ultra/Pro Lite software.

I3-AD3016/I3-AD3416 specifications:

Connection type: **PCI-Express**

Number of BNC spot monitors supported: **3**

Number of audio channels supported: **4***

Real-time Display supported: **No**

Maximum frame rate supported: **240 (NTSC) fps / 200 (PAL) fps**

*I3-AD3416 only

The new I3-AD3416 will be offered only with our Pro Lite units, while I3-AD3016 capture board will be offered with both UltraLite and Pro Lite DVMS units. This means that no additional audio channels will be supported on UL6010/UL6016 models, while PL12010/PL12016 units may be upgraded with an extra 4 audio channel outputs. A 4-channel RCA audio fly-out cable will be shipped with all Pro Lite units that were ordered with I3-AD3416 capture board to connect to the DB9 audio port.

The lower supported frame rate as compared to I3-AD2016 / I3-AD2816 models is one of the things that makes these boards more cost efficient and perfect for the Lite DVR solutions. At the same time, the new boards boast a total of 3 BNC spot monitor connections – a new feature not offered by older capture board models. First spot monitor output supports 1-, 4-, 9-, and 16-screen divisions, while two remaining spot monitor outputs support single and quad screen divisions only.

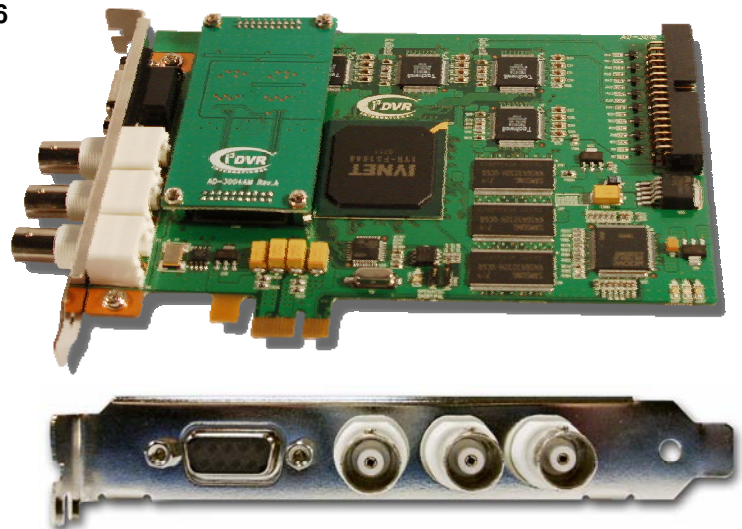


Figure 1. I3-AD3416 capture board.

Note: I3-AD3016 capture board comes without DB9 audio port.

The new lighter version of the I/O board (I3-WDT22) features 2 input and 2 output connections as well as a single RS-485 port. No spot monitor connectors are offered on the I/O board, the limitation remedied by the new capture board series that support a total of up to 3 spot monitors.

To install the new input/output board only an available expansion card slot is required. The new board utilizes the internal USB connection on the motherboard, which means that no PCI/PCIe port is needed.

Just like the ADIO-1616/ADIO-3232 I/O board series, the new I3-WDT22 board has an internal watchdog function that will restart the DVMS whenever SRX-Pro Server video recording stops abnormally or when the SRX-Pro Server GUI (Graphic User Interface) is "frozen".

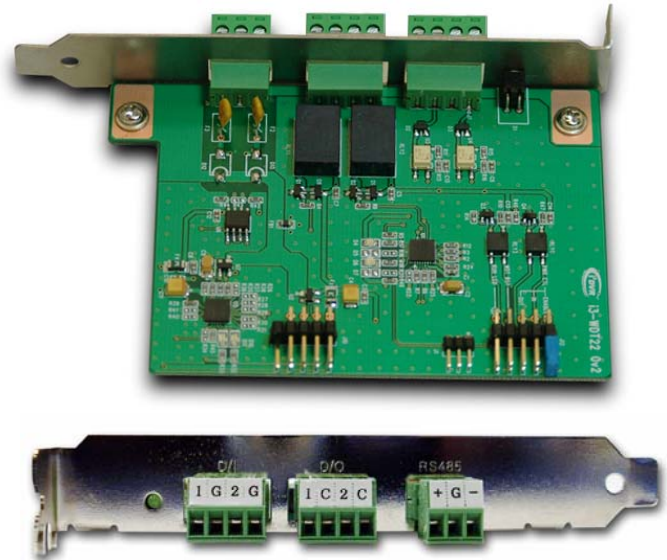


Figure 2. I3-WDT22 I/O board

I3-WDT22 specifications:

Connection type: **internal USB**

Number of inputs/outputs: **2/2**

Number of RS-485 ports: **1**

The new capture and an I/O boards are due to be released for production in the second quarter. Further official release notes as well as updated hardware/software feature documentation will follow as the production release date approaches.

Please contact technical support at support@i3dvr.com or by phone: 1.877.877.7241 if you have any other questions or issues.

Thank you very much for your attention and cooperation.

Best regards,



Bob Hoang
Technical Support and Services
1.416.261.2266 x107
bob@i3dvr.com