

To all of our customers and partners;

**Release Announcement: Ax88, 12MP 360° Fisheye IR IP dome
B88, mounting back box for Ax88**

i3 International is pleased to announce the release of Ax88, 360° Fisheye 12MP IR IP dome camera and the (optional) mounting back box, **B88**.

AX88 Feature highlights:

- 12MP image sensor
- 360° image stream for a variety of applications, including i3Ai.
- Up to 49 ft (15m) IR range.
- Wide area coverage with one camera, no blind spots, no moving parts, resulting in camera count and infrastructure reduction.
- Total situational awareness, not achievable with fixed cameras and PTZ domes.
- Up to four (4) live ePTZ video streams while simultaneously recording the full scene.
- MicroSD support for the “edge” video recording.



Supported Compressions:

AX88 supports H.265, H.264 (default) and Motion JPEG video compression. The camera is shipped pre-set to H.264 codec to facilitate backwards compatibility to the earlier versions of SRX-Pro (below v7). H.265 codec allows for faster and more efficient video transmission over the network and increases video retention without adding any additional storage. To change the codec to H.265 in the camera's web settings, go to Setup > Video > Video Configuration > Video Stream and change the codec setting for each Channel and each Stream.

Supported Modes/Channels

The camera supports three distinct modes with a single IP license. Note, each channel supports dual video streaming (main, sub).

Mode 1, 1 channel (Default):

- Fisheye only (2992x2992)

Mode 2, 5 channels:

- Fisheye (2560x2560)
- 4x ePTZ (1600x1200)

Mode 3, 5 channels:

- Fisheye (2560x2560)
- Panorama (3200x800)
3x ePTZ (1600x1200)

ePTZ streams are simultaneous, independently controlled digital pan-tilt-zoom (ePTZ) video streams, which may be recorded or viewed live.

AX88 is perfect for both indoor and outdoor installations, while the (digital) Wide Dynamic Range (WDR) helps achieve superb image quality within even the most challenging of environments. These moisture-, dust- and vandal-resistant cameras are IP66-certified and IK10-compliant.

The versatility of AX88 IP cameras makes them suitable for a range of video surveillance applications, including government and industrial buildings, retail environments, airports, railway stations and schools. These series

are best suited for use with the i3's i3Ai-enabled systems, as well as NVR and HVR - Video Management Systems.

B88 is the ¾" back box mounting bracket for AX88, which supports a variety of mounting options. Refer to i3's [Camera mounting reference guide](#) for more information.

Important Notes:

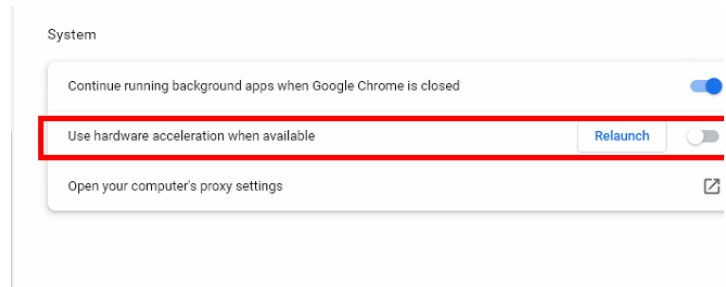
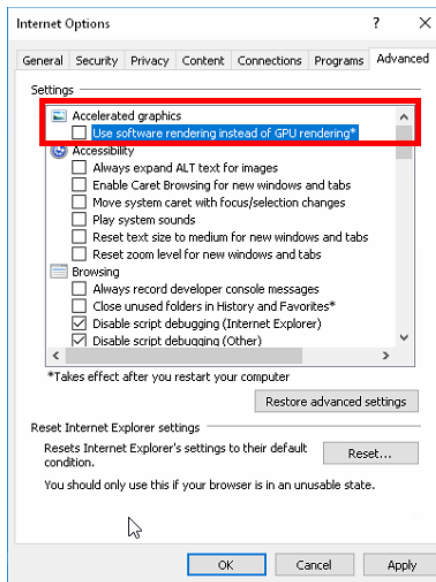
- New default IP address: **192.168.0.16**. Going forward, new i3 IP camera series will come pre-programmed to 192.168.0.16 IP by default.
- Required software:
 - Annexus Configuration Tool **v1.9.2.0**, or newer
 - SRX-Pro GiPi, **March 30, 2022** release, or newerVisit i3 Download page to download the latest version of Annexus Configuration Tool and gipi installer: <https://www.i3international.com/support/download>
- Recommended browser: Chrome
- If accessing the camera through a web browser, disable the graphics acceleration first.

To disable graphics acceleration in Internet Explorer:

Tools > Internet Options > Advanced.
Uncheck **"Use software rendering instead of GPU rendering"** and click **Apply**.

To disable graphics acceleration in Chrome:

Settings > Advanced > System
Disable **"Use hardware acceleration when available"** toggle.



Supported AX88 Mounting options:

Installation type	Mounting accessories required
Drywall / block wall / ceiling tile surface mount	Built-in or B88
Horizontal wall mount	B88 + DB60
Pendant mount	B88 + 3/4" EMT pipe
Pole mount / Corner mount	DB88 + DB60 + DB60CPM
Parapet	DB88 + CP1 + i3D706
Electrical, hex & single gang boxes	DB88
Outdoor wall junction box	DB88 + CP1 + i3D704 (or i3D705)

Brackets & Accessories:

B88 – back box for horizontal wall mount and pendant installations

DB60 – wall-mount gooseneck bracket

DB60CPM – corner/pole mount bracket, combine with DB60

With any pricing questions, kindly contact our Customer Care department at 1.866.840.0004.

i3 International Technical Support and Services

Email: support@i3international.com

Tel.: 1.877.877.7241



Part #: B88