



March 11, 2016

Re: Adding a Hard Drive to i3 Compact units

To all of our customers and partners;

i3 Compact Wall/Rackmount HVR/NVR units can accept up to three storage hard drives. i3 Compact HVR/NVR Servers are shipped with a solid state OS drive and at least one storage drive by default. The customer can add up to two more storage drives to the unit. This bulletin outlines the standard procedure for installing, formatting and allocating new storage drives in accordance with i3 International policy.

WARNING: Please use i3-approved hard drives **only**, see the list below. Using any other brand or model of the hard drives will result in void warranty and may cause compromised HVR/NVR performance, including i3 Server malfunction and irreversible loss of data.

- Handle hard drives with care. Do not subject the drive(s) to physical shock.
- Ground yourself before handling hard drives. Static electricity may cause immediate or delayed damage to the HVR/NVR components, including hard drives.

List of i3-approved WD SATA hard drives:

- WD1003FBYZ (Western Digital 1TB Re)
- WD1004FBYZ (Western Digital 1TB Re)
- WD2000FYYZ (Western Digital 2TB Re)
- WD2004FBYZ (Western Digital 2TB Re)
- WD3000FYYZ (Western Digital 3TB Re)
- WD4000FYYZ (Western Digital 4TB Re)
- WD4002FYYZ (Western Digital 4TB Re)
- WD6001FSYZ (Western Digital 6TB Re)
- WD6002FRYZ (Western Digital 6TB Re)

Parts/Tools needed:

- Grounding wrist strap
- i3 approved hard drive(s)
- Phillips screwdriver

i3 factory hard drive standards:

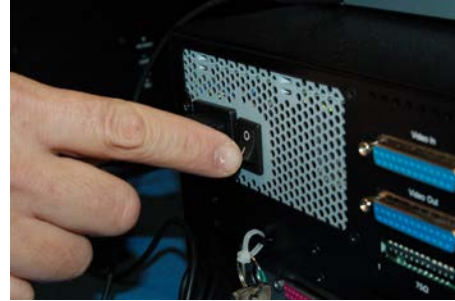
- Only the i3-approved Western Digital hard drive models may be installed in the i3 HVR/NVR Server.
- All hard drives are to be formatted in NTFS format.
- All partitions must be named in a continuous alphabetical sequence, with no gaps.
- Windows 7e OS must reside on the solid state drive and must take up the entire volume of that drive (mSATA or SSD).
- The first storage drive must be installed in the SATA bay #1 and must include partitions D:\, E:\ and F:\
- D:\ partition must be 100GB or more. Factory-shipped units include a unit restore image as well as software installation and other supporting files on partition D:\.
- Partitions E:\ and F:\ must be divided equally and must take up the remainder of the first storage hard drive.
- During formatting process, all storage partitions are assigned a descriptive label: "HDD#", where # = the number label attached to the SATA slot on the SBB3 or SBB4 enclosure. This simplifies servicing when a defective drive needs to be replaced in the field.
- Storage hard drives 3TB or larger, must be converted to GPT Disk format.

Step 1.



Safely shut down the HVR/NVR (In SRX-Pro Server, File>Shutdown), unplug the power.

Step 2.



Switch the power switch on the Power Supply to the OFF position (if present).

Step 3.



Open the unit door and locate the hard drive bay. All three hard drive slots should be locked. This is indicated by the red dot on each respective HDD slot.

Step 4.

Use the plastic key included in your accessories box or a pointed object, such as a screwdriver or a pen to unlock the hard drive bay(s) labeled HDD2 and/or HDD3. Push the sliding tab to the bottom, covering the red dot. The bay will be unlocked.

Note: All Compact units come with at least one storage hard drive that is always installed inside the hard drive bay labeled HDD1.

With your finger, lift the hard drive bay tab until the hard drive bay pops open and the door swings out and to the right.

Ground yourself. Do not handle hard drives without wearing the antistatic wrist strap. Static electricity may damage the unit and/or the new hard drive. Any such damage through user negligence is not covered by the unit warranty.

Step 5.

Position the new hard drive face up and with the connectors facing away from you and to the inside of the HVR/NVR unit.

Carefully but firmly slide the new hard drive all the way inside the unit and close the hard drive bay door.

Use the provided plastic key or a pointed object to re-lock the hard drive bay by sliding the tab to the top exposing the red dot.



Step 6.

Connect the power to the unit and return the power switch on the back of the power supply back into the ON position.

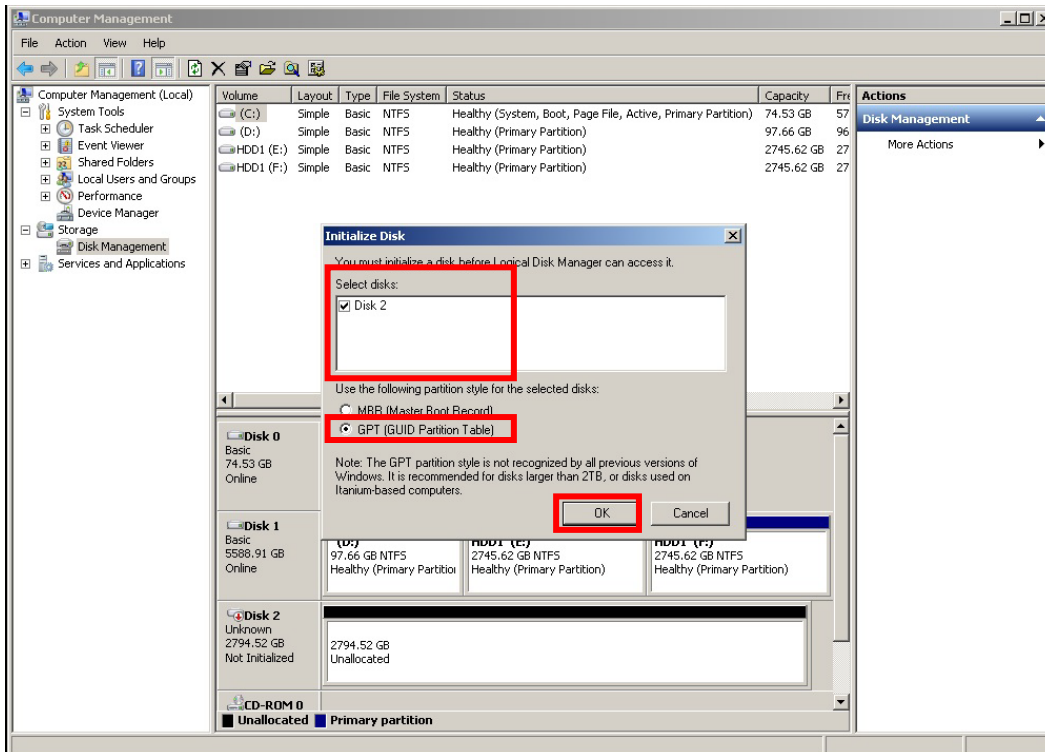
If the unit does not power ON automatically, use the power switch on the front of the unit to power the unit ON.



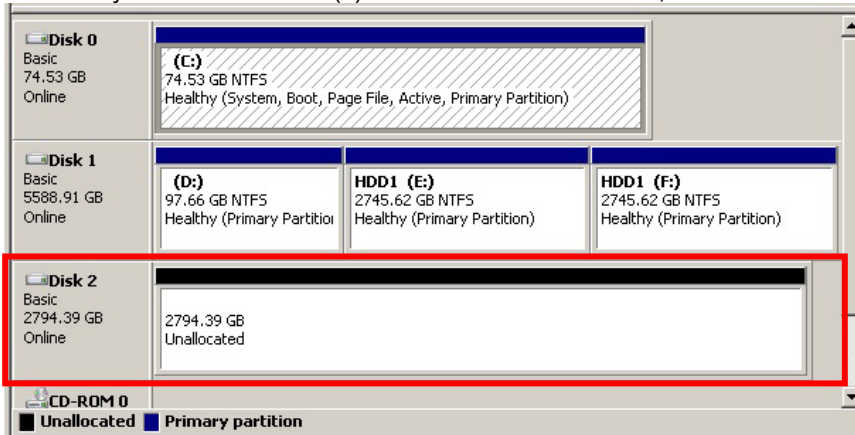
Now that the additional drive has been added to the system, it needs to be partitioned in accordance with i3 standards.

Partitioning a storage Hard Drive in Windows 7

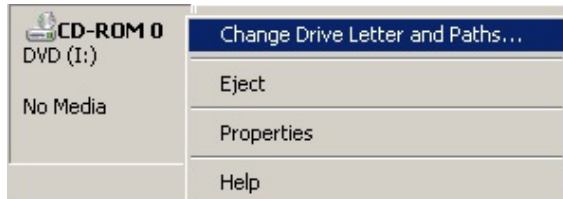
1. Wait as Windows 7e OS and the SRX-Pro Server finish loading. Log into the SRX-Pro Server as an administrator and press **Alt + Shift + Ctrl + F4** on your keyboard to exit SRX-Pro Server and access the Desktop. Administrator password will need to be re-entered.
2. Press the Windows key on your keyboard. In Start menu, right-click on **Computer** and select **Manage** from the context menu. Computer Management window will be displayed.
3. **Note:** This step is for HDDs 3TB and over only. Skip for 1TB and 2TB hard drives. If your newly added i3-approved WD hard drive is 3TB or larger, it must be converted to GPT format first. Initialize Disk window will be displayed automatically after the new HDDs (>3TB) are added.
4. In the Initialize Disk window, make sure all newly added drives that are 3TB and larger are selected. Select the **GPT (GUID Partition Table)** radio button and click **OK**.



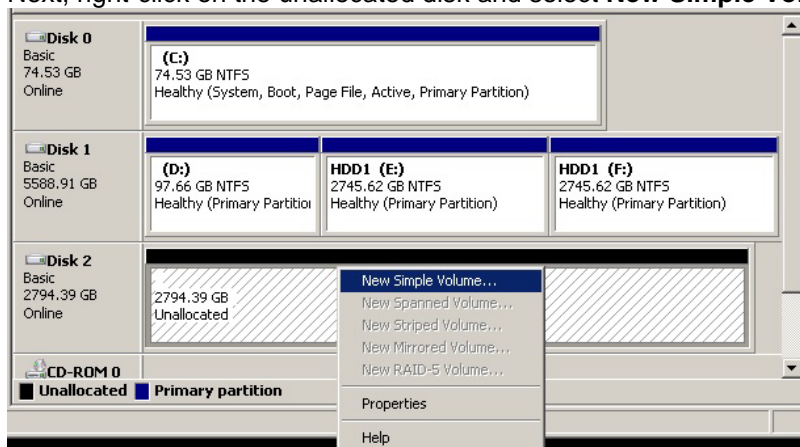
- The newly added hard drive(s) will be marked as “Basic, Unallocated”.



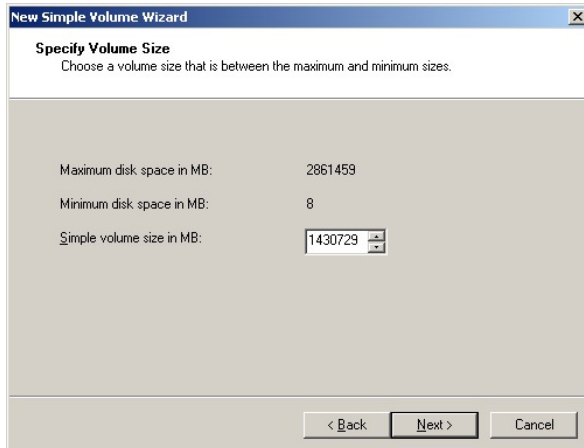
- Since all partitions, including the optical drive must be labeled in a continuous alphabetical sequence, with no gaps, start by temporarily assigning the optical drive (CD-ROM) the last available drive letter. Once all new drives are added, formatted and labeled, you will re-assign the appropriate drive letter to your optical drive. To change your CD-ROM drive letter, right-click on the CD-ROM 0 item and select **Change Drive Letter and Paths...**



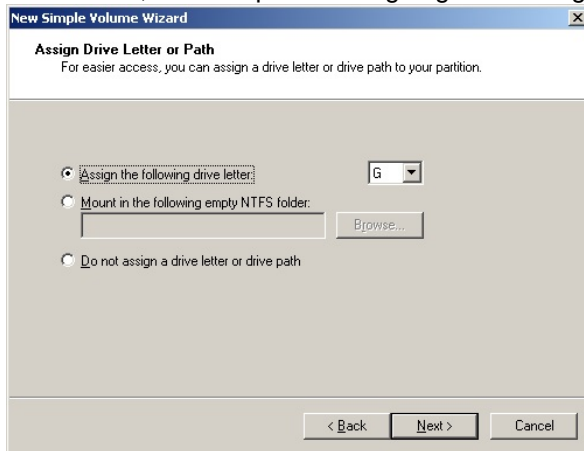
- In the Change Drive Letter and Path window, select the last available drive letter from the drop-down menu. E.g. Drive letter “Z”.
- Next, right-click on the unallocated disk and select **New Simple Volume...**



- Click **Next >** in the New Simple Volume Wizard Welcome screen.
- As per i3 standards, all storage disks must be split into two equal-sized partitions. In the next New Simple Volume Wizard window, copy the value from **Maximum disk space in MB:** line. Use Calculator and divide the value in 2. Enter the resulting value into the **Simple volume size in MB:** line and click **Next >**.

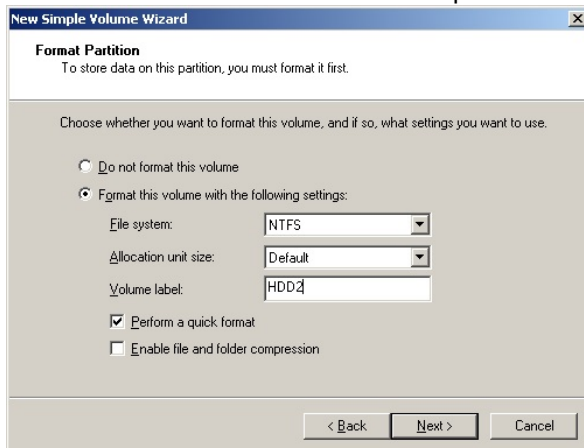


11. Assign the drive letter to the new partition. Select the first letter available in the list and click **Next >**. In this case, the new partition is going to be assigned drive letter “G”.

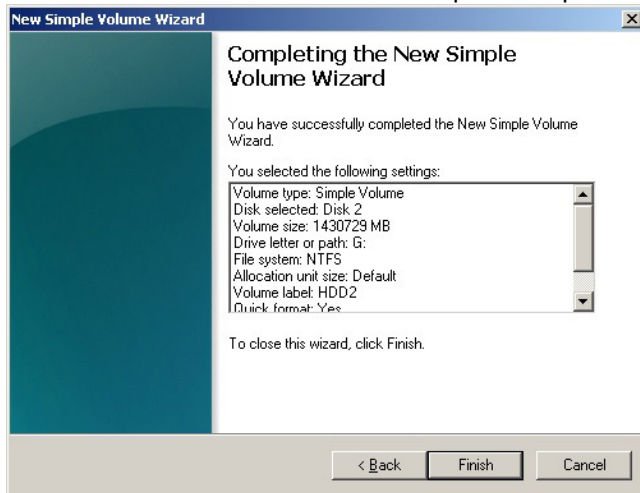


12. In the next screen, select **Format this volume with the following settings:** radio button. Make sure File system: is set to **NTFS**. Enter **Volume label:** and click **Next >**.

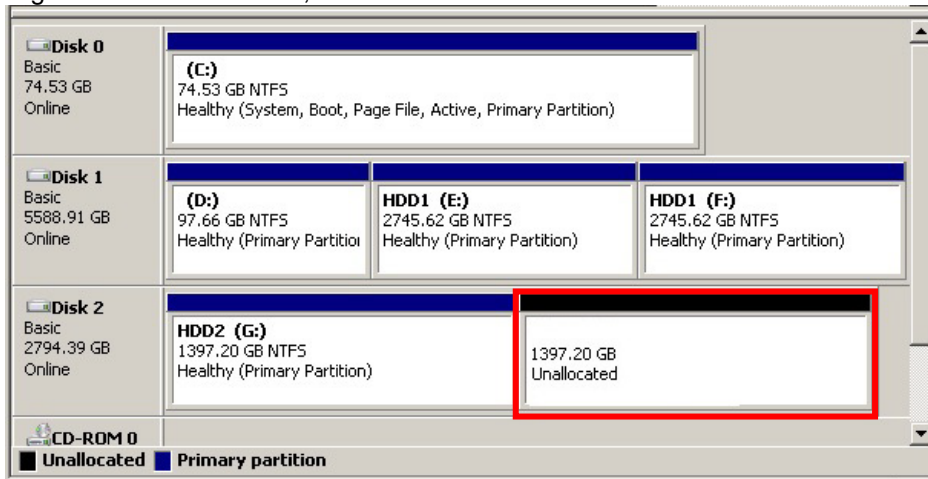
It is recommended to label the new partition in accordance with the physical SBB3 bay label, where the new drive was installed. This will aid in simpler unit servicing. In this case, volume label is **HDD2**.



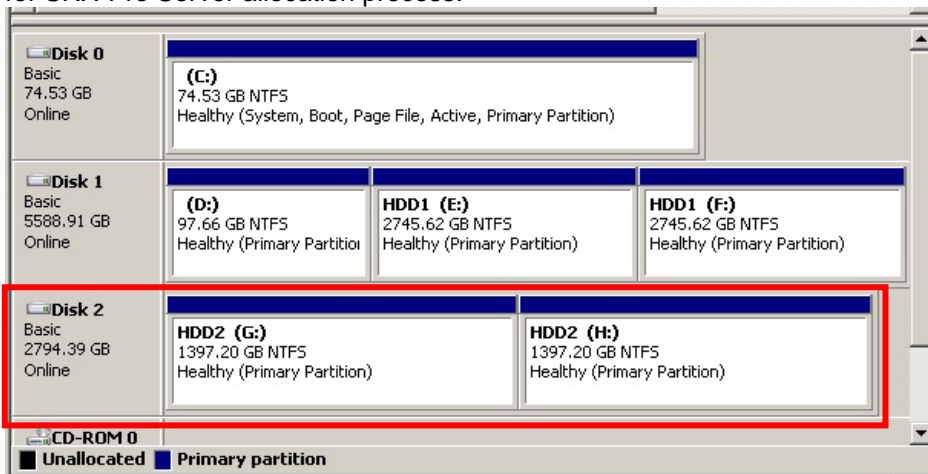
13. Click **Finish** in the final screen to complete the partitioning process.



14. Right-click on the second, unallocated half of the new drive and select **New Simple Volume...**



15. Repeat Steps 9-13 to format the second half of the new drive. The drive is now fully partitioned and ready for SRX-Pro Server allocation process.





INTELLIGENT VIDEO DRIVING PROFIT

16. Repeat Steps 8-15 for all new unallocated drives until all new drives have been partitioned into 2 equal partitions. The drive letters of all partitions should form an uninterrupted sequence (i.e. E,F,G,H,I,J).
17. Once all new drives have been correctly partitioned, change the CD-ROM drive letter to the next in alphabetical sequence.
18. Close Computer Management window and re-start SRX-Pro Server software.
19. Once SRX-Pro Server launches log in and go to Setup -> Storage Setup and allocate all new partitions for video recording.

This completes the new hard drive configuration.

Please contact technical support if you have any questions or issues.

Email: support@i3international.com

Tel.: 1.877.877.7241

Live Chat: <http://i3chat.i3international.com/chat>

i3 International Inc.

Technical Support and Services